

# Sarawak

# FACTS AND FIGURES



State Planning Unit  
Chief Minister's Department, Sarawak  
MACRO SECTION, SPU

2 0 0 2 / 2 0 0 3

# **RUKUN NEGARA**

## **DECLARATION**

OUR NATION, MALAYSIA, being dedicated

To achieving a greater unity of all her peoples;

To maintaining a democratic way of life;

To creating a just society in which the wealth of the nation shall be equitably shared;

To ensuring a liberal approach to her rich and diverse cultural traditions;

To building a progressive society which shall be oriented to modern science and technology;

We, her peoples, pledge our united efforts to attain these ends guided these principles:

**Belief in God**

**Loyalty to King and Country**

**Upholding the Constitution**

**Rule of Law**

**Good Behaviour and Morality**

# SARAWAK FACTS AND FIGURES

	<i>Page</i>
<b>A. CONTENTS</b>	
<b>Background Information</b>	
Sarawak: Location and Size	2
Facts on Sarawak	3
Key Summary Statistics of Malaysia Population 2000	4
Sarawak: Area, Population, Average Growth Rate & Population Density by District	5
Sarawak: Administrative System	6
Sarawak: Administrative Divisions & Districts	7-8
Sarawak: Population by Sex and Administrative District, 2000	9
Sarawak: Niche Economic Activities By Division	10
Sarawak: Population Distribution By Stratum	11
Sarawak: Total Population By Ethnic Group and Administrative District, 2000	12
Sarawak: Population By Age Group 2003 (e)	13
Sarawak: Labour Force, Employment and Unemployment	14
Sarawak and Malaysia: Percentage Distribution of Employed Persons by Industry	15
Sarawak: Land Use	16
Sarawak: Natural Resources	17

## CONTENTS - (cont.)

Sarawak and Malaysia: Planted Area of Main Crops ('000 hectares)	18
Sarawak: Settled Agriculture	19
Sarawak: Hydro-Electric Power	20
Sarawak: Electricity - Generation Mix	21
Sarawak and Malaysia: Road by Surface Type (km)	22
Sarawak: Infrastructure	23
Sarawak: Industrial Estates	24

### **B. ECONOMIC INDICATORS**

Sarawak and Malaysia: Gross Domestic Product 1987-2003e	26
Sarawak and Malaysia: GDP per Capita, 1987-2003e	27
Sarawak: Gross Domestic Products by Sectors 1996-2003e	28
Sarawak: Expenditure on Gross Domestic Product in Purchaser's Value at Current Prices (1995-2002e)	29
Sarawak: Approved Investment Value	30
Sarawak: Loans Given by Commercial Banks and Finance Companies	31
Sarawak: Consumer Price Index (2000=100) Index Numbers for Main Groups	32

## CONTENTS - (cont.)

### C. PRODUCTION

Sarawak: Major Agriculture Production ('000 tonnes)	34
Sarawak: Landing of Marine Fish by Gear Group (tonnes)	35
Sarawak: Aquaculture Production	36
Sarawak: Production of Saw Logs and Sawn Timber	37
Sarawak: Production of Minerals	38
Sarawak: Gross Value Output by Major Manufacturing Industry Groups (RM million)	39-41

### D. EXTERNAL TRADE

Sarawak: Exports, Imports and Balance of Trade	43
Sarawak: Exports by Commodity Section	44
Sarawak: Major Exports Items by Value (RM million)	45-46
Sarawak: Exports Volume of Major Commodities	47
Sarawak: Exports by Country of Destination (RM million)	48-49
Sarawak: Imports by Commodity Section	50
Sarawak: Imports by Country of Destination (RM million)\	51-52

## CONTENTS - (cont.)

### **E. SOCIAL INDICATORS**

Sarawak and Malaysia: Percentage of Population with Water Supply (%)	54
Sarawak: Consumption and Production of Water	54
Sarawak and Malaysia: Percentage of Population with Electricity Supply (%)	55
Sarawak: Unit Generated & Consumption of Electricity	55
Sarawak and Malaysia: Summary of Other Comparative Social and Quality of Life Indicators	56
Sarawak: Education and Training	57
Sarawak: Health Services	58
Sarawak: Tourist Arrivals by Country of Origin	59
Sarawak: Tourism Interest Areas	60
Sarawak: Number of New Vacancies Reported by Industry Groups	61

### **F. STATE DEVELOPMENT: VISION, GOAL, DEVELOPMENT THRUSTS, DEVELOPMENT OBJECTIVES, STRATEGIES AND OPPORTUNITIES**

Vision	63
State Development Goal	63
State 8MP: Development Thrusts	63

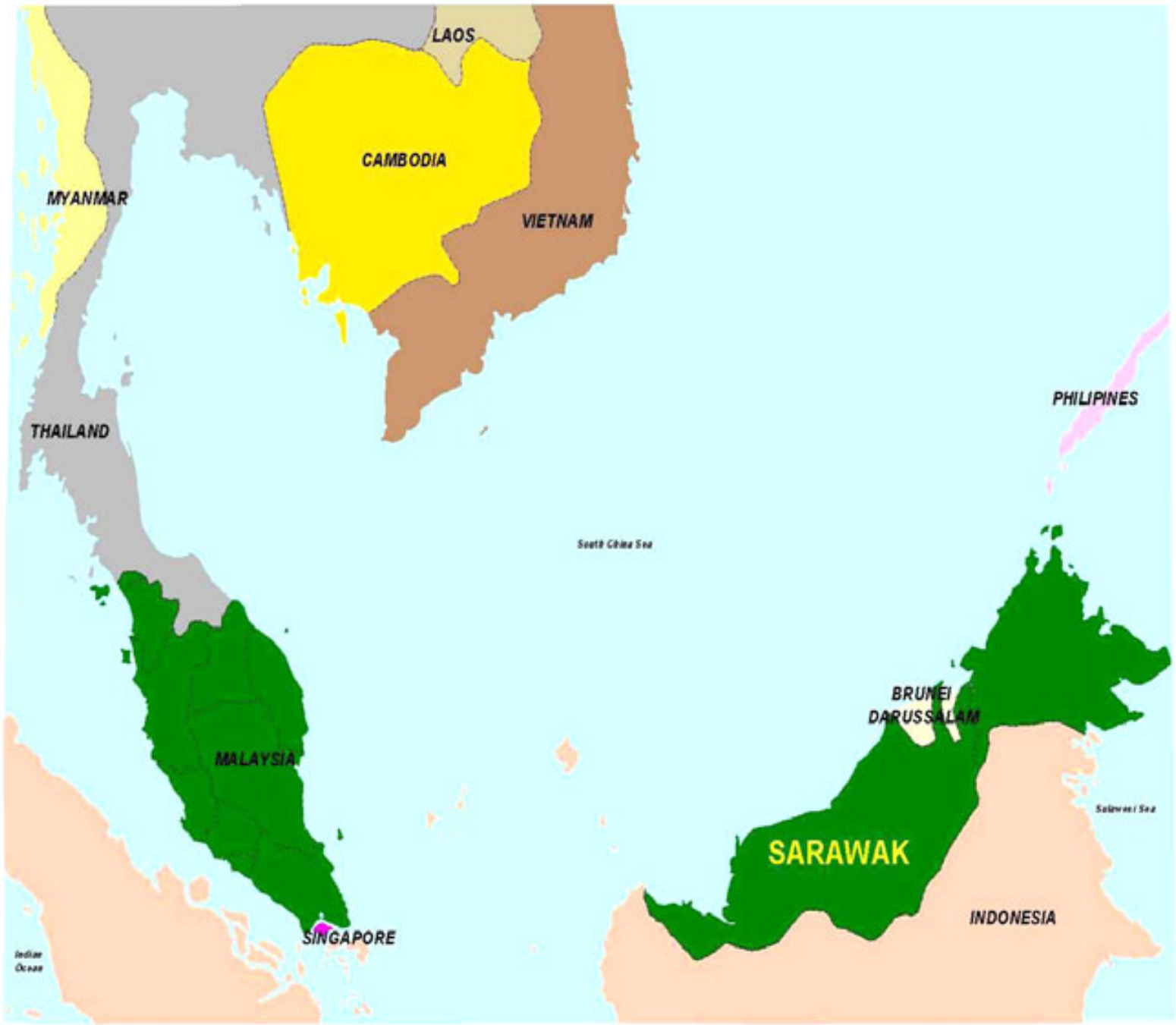
## CONTENTS - (cont.)

Development Policies	64
Broad Development Objectives	64
Broad Development Strategies	65
Sarawak: Opportunities, Strategic Focus and New Approaches	65
Opportunities in Agriculture Sector	66
Opportunities in The Manufacturing Sector	66
Opportunities in The Tourism Sector	67
Opportunities in Service Sector	67

**BACKGROUND**  
**INFORMATION**

---





**SARAWAK AND ITS NEIGHBOUR**

Administrative Boundaries  
 ----- International  
 ..... State



DIGITAL SPATIAL INFORMATION MANAGEMENT SECTOR  
 STATE PLANNING UNIT  
 CHIEF MINISTER'S DEPARTMENT  
 2003

## FACTS ON SARAWAK

<b>TOTAL AREA</b>	:	124,449 square kilometres
<b>LOCATION</b>	:	Between latitude 0° 50' and 5° N and longitude 109° 36' and 115° 40' E
<b>SYSTEM OF GOVERNMENT</b>	:	Parliamentary democracy with a constitutional monarch
<b>CAPITAL OF SARAWAK</b>	:	Kuching
<b>MAJOR ETHNIC GROUPS</b>	:	Malays, Iban, Chinese, Bidayuh, Melanau, Orang Ulu, Indian, and other indigenous groups
<b>MAJOR LANGUAGES</b>	:	Malay (official language), English, Mandarin, Iban, others local dialects
<b>MAJOR RELIGIOUS</b>	:	Islam (official religion), Buddhism, Christian, and Hindu
<b>TIME</b>	:	GMT + 8 hours
	:	US Eastern Standard Time + 13 hours
<b>CLIMATE</b>	:	Tropical: warm and sunny throughout the year. Daily temperature range from 33 °C (90°F) in the afternoon to 22°C (70°F) during the night.
<b>CURRENCY</b>	:	Ringgit Malaysia (RM) which is divided in 100 cent.
<b>EXCHANGE RATE</b>	:	Pegged at US\$1=RM3.80 on 2 September 1998.

## KEY SUMMARY STATISTIC OF MALAYSIA POPULATION 2000

STATE	Population 2000 ( <sup>'000</sup> )	Average Growth 1991-2000 (%)	State Distribution (%)	Area (sq.km)	Population Density (per sq.km)	Dependency Ratio (%)	Sex Ratio
<b>SARAWAK</b>	<b>2,071.5</b>	<b>2.1</b>	<b>8.9</b>	<b>124,449.0</b>	<b>17.0</b>	<b>62.8</b>	<b>103.0</b>
Johor	2,740.6	2.6	11.8	18,986.0	144.0	55.2	107.0
Kedah	1,649.8	2.1	7.1	9,426.0	175.0	65.9	99.0
Kelantan	1,313.0	0.9	5.6	14,920.0	87.0	86.3	100.0
Melaka	635.8	2.0	2.7	1,651.0	385.0	58.9	101.0
Negeri Sembilan	859.9	1.9	3.7	6,643.0	129.0	58.1	105.0
Pahang	1,288.4	1.9	5.5	35,965.0	36.0	63.3	110.0
Perak	2,051.2	0.4	8.8	21,005.0	98.0	62.4	101.0
Perlis	204.5	0.8	0.9	795.0	257.0	66.1	97.0
Penang	1,313.4	1.8	5.6	1,030.0	1,274.0	46.8	99.0
Selangor	4,188.9	6.1	18.0	7,955.0	526.0	49.7	105.0
Terengganu	898.8	1.2	3.9	12,955.0	69.0	78.9	104.0
Federal Territory KL	1,379.3	1.3	5.9	243.0	5,676.0	40.4	103.0
Federal Territory Labuan	76.1	3.6	0.3	92.0	827.0	64.1	110.0
Sabah	2,603.5	4.0	11.2	73,620.0	35.0	68.8	107.0
<b>MALAYSIA</b>	<b>23,274.7</b>	<b>2.6</b>	<b>100.0</b>	<b>329,735.0</b>	<b>71.0</b>	<b>59.2</b>	<b>104.0</b>

Source: : *Population and Housing Census of Malaysia, 2000*

NOTE : Sex ratio - the ratio of number of males for every 100 females

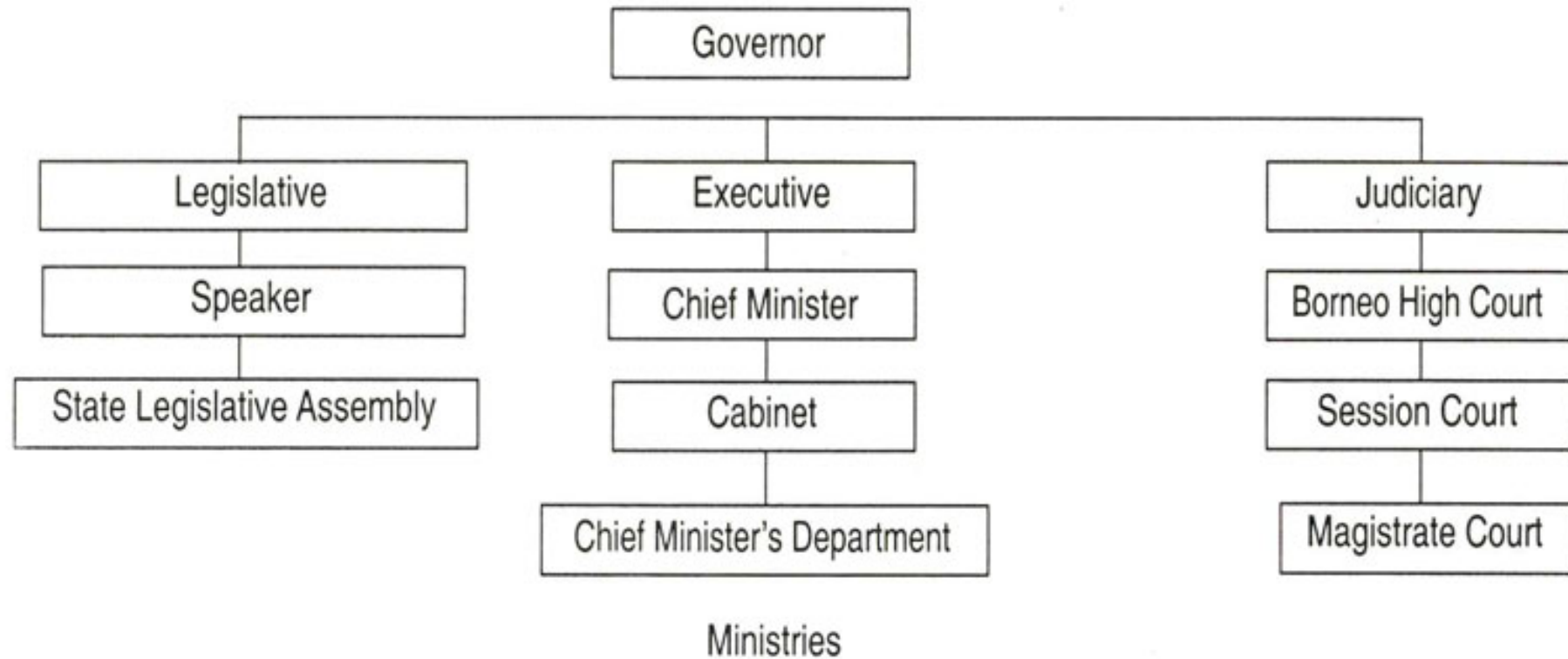
The dependency ratio is a measure of the dependence that non-working people have on working people

**SARAWAK: AREA, POPULATION, AVERAGE GROWTH RATE  
& POPULATION DENSITY BY DISTRICT**

Division/ District	Population 1991 (000)	Population 2000 (000)	Average Annual Growth Rate (%) (1991-2000)	Area (sq.km)	Population Density (Person/Sq.km) (2000)
Kuching	369.1	509.4	3.6	1,868.8	272.6
Bau	36.0	43.2	2.0	884.4	48.8
Lundu	24.5	28.1	1.5	1,812.3	15.5
<b>KUCHING DIVISION</b>	<b>429.5</b>	<b>580.7</b>	<b>3.3</b>	<b>4,565.5</b>	<b>127.2</b>
Samarahan	33.2	48.1	4.1	407.1	118.1
Serian	71.9	82.0	1.5	2,039.9	40.2
Simunjan	35.1	38.1	0.9	2,327.6	16.4
Asajaya	24.4	29.1	2.0	302.8	96.1
<b>KOTA SAMARAHAN DIVISION</b>	<b>164.6</b>	<b>197.3</b>	<b>2.0</b>	<b>4,961.4</b>	<b>39.8</b>
Sri Aman	58.6	64.5	1.1	3,845.7	16.8
Lubok Antu	22.2	24.0	0.8	2,338.4	10.2
<b>SRI AMAN DIVISION</b>	<b>80.9</b>	<b>88.5</b>	<b>1.0</b>	<b>6,184.1</b>	<b>14.3</b>
Sarikei	49.6	59.0	1.9	1,715.5	34.4
Maradong	27.0	29.9	1.2	1,083.8	27.6
Julau	28.1	32.7	1.7	2,628.4	12.4
<b>SARIKEI DIVISION</b>	<b>104.7</b>	<b>121.6</b>	<b>1.7</b>	<b>5,427.7</b>	<b>22.4</b>
Sibu	170.4	218.1	2.7	3,149.8	69.2
Kanowit	25.4	28.0	1.1	2,253.6	12.4
<b>SIBU DIVISION</b>	<b>195.8</b>	<b>246.1</b>	<b>2.5</b>	<b>5,403.4</b>	<b>45.5</b>
Bintulu	86.1	143.4	5.7	7,220.4	19.9
Tatau	21.1	23.9	1.4	4,945.8	4.8
<b>BINTULU DIVISION</b>	<b>107.3</b>	<b>167.3</b>	<b>4.9</b>	<b>12,166.2</b>	<b>13.8</b>
Kapit	55.6	58.4	0.6	15,595.6	3.7
Song	17.6	19.8	1.3	3,935.2	5.0
Belaga	22.3	23.6	0.6	19,403.2	1.2
<b>KAPIT DIVISION</b>	<b>95.5</b>	<b>101.8</b>	<b>0.7</b>	<b>38,934.0</b>	<b>2.6</b>
Miri	161.4	228.2	3.9	4,707.1	48.5
Marudi	72.0	73.9	0.3	22,070.0	3.3
<b>MIRI DIVISION</b>	<b>233.3</b>	<b>302.1</b>	<b>2.9</b>	<b>26,777.1</b>	<b>11.3</b>
Limbang	33.9	41.0	2.1	3,978.1	10.3
Lawas	29.3	33.6	1.5	3,811.9	8.8
<b>LIMBANG DIVISION</b>	<b>63.2</b>	<b>74.6</b>	<b>1.8</b>	<b>7,790.0</b>	<b>9.6</b>
Mukah	41.8	46.2	1.1	5,018.9	9.2
Dalat	22.0	24.2	1.0	2,217.4	10.9
Matu	9.2	11.5	2.5	680.0	16.9
Daro	13.2	15.3	1.6	860.9	17.7
<b>MUKAH DIVISION</b>	<b>86.2</b>	<b>97.2</b>	<b>6.2</b>	<b>8,777.2</b>	<b>54.7</b>
Betong	44.0	51.4	1.7	1,776.0	29.0
Saratok	37.9	43.0	1.4	1,686.9	25.5
<b>BETONG DIVISION</b>	<b>81.9</b>	<b>94.4</b>	<b>3.1</b>	<b>3,462.9</b>	<b>54.5</b>
<b>SARAWAK</b>	<b>1,718.4</b>	<b>2,071.5</b>	<b>2.1</b>	<b>124,449.5</b>	<b>16.6</b>

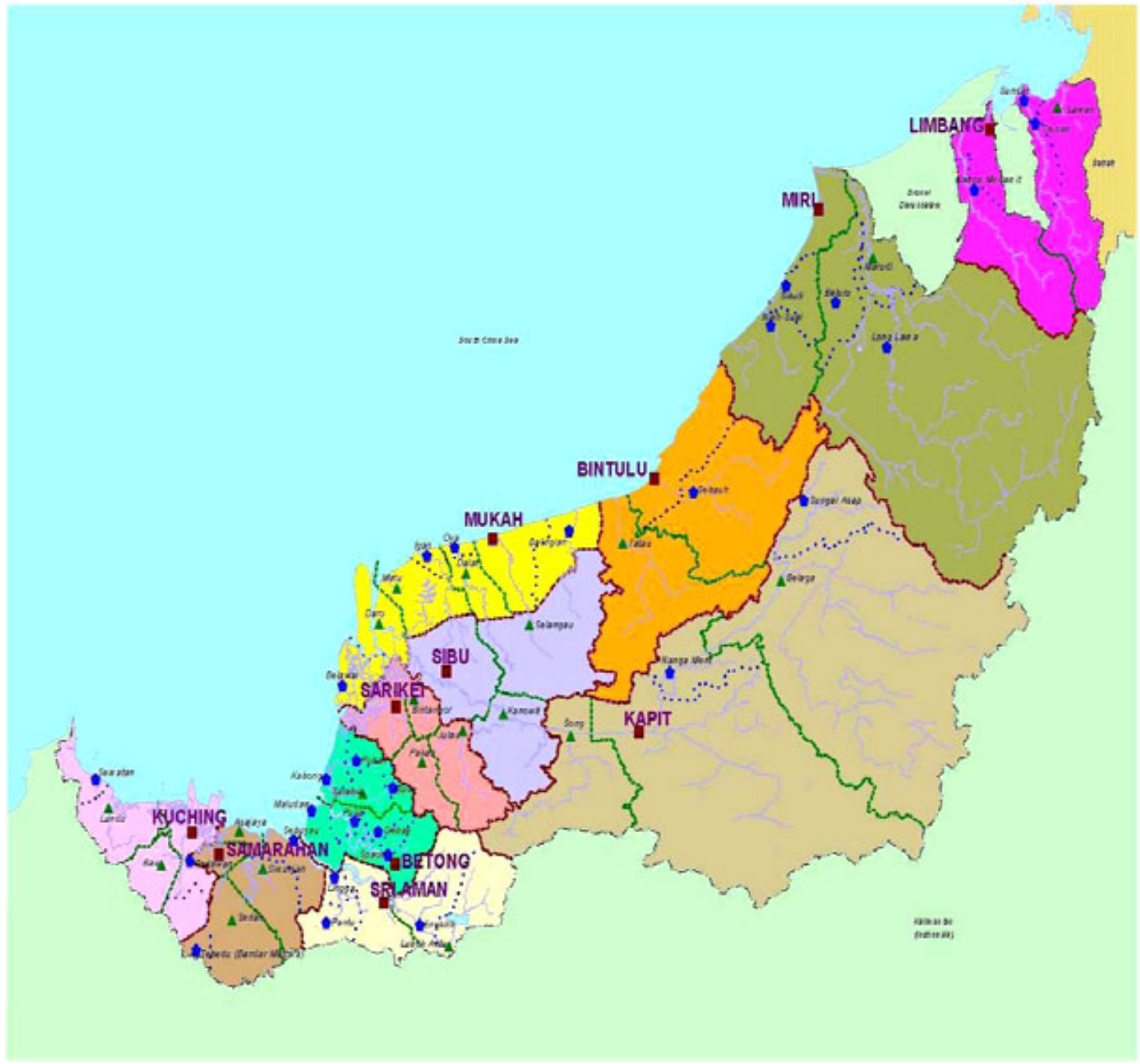
Source: Population and Housing Census of Malaysia, 1991 & 2000, Department of Statistics Malaysia

## SARAWAK: ADMINISTRATIVE SYSTEM



- \* Ministry of Planning & Resource Management
- \* Ministry of Finance & Public Utilities
- \* Ministry of Rural & Land Development
- \* Ministry of Environment & Public Health
- \* Ministry of Tourism

- \* Ministry of Housing
- \* Ministry of Industrial Development
- \* Ministry of Agriculture & Food Industry
- \* Ministry of Social Development & Urbanisation
- \* Ministry of Infrastructure Development and Communications

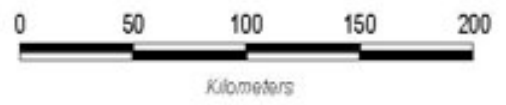


**SARAWAK: ADMINISTRATIVE AREAS**

- Administrative HQs
- Divisional
  - ▲ District
  - Sub-District

- Administrative Boundaries
- International
  - State
  - Division
  - - - District
  - ..... Subdistrict

- Divisions
- Kuching
  - Samarahan
  - Sri Aman
  - Betong
  - Sarikei
  - Kapit
  - Sibu
  - Mukah
  - Bintulu
  - Miri
  - Limbang



DIGITAL SPATIAL INFORMATION MANAGEMENT SECTOR  
 STATE PLANNING UNIT  
 CHIEF MINISTER'S DEPARTMENT  
 2003

**ADMINISTRATIVE DIVISIONS AND DISTRICT (cont.)**

<b>DIVISION</b>	<b>DISTRICTS</b>	<b>SUBDISTRICTS</b>	<b>DIVISION</b>	<b>DISTRICTS</b>	<b>SUBDISTRICTS</b>
KUCHING	Kuching Bau Lundu	Padawan  Sematan	SIBU	Sibu Kanowit Selangau	
SAMARAHAN	Samarahan Asajaya Serian Simunjan	  Tebedu Sebuyau	MUKAH	Mukah Dalat Daro Matu	Balingian Oya Belawai Igan
SRI AMAN	Sri Aman Lubok Antu	Lingga, Pantu Engkelili	BINTULU	Bintulu Tatau	Sebauh
BETONG	Betong  Saratok	Maludam, Debak, Spaoh, Pusa Kabong, Roban, Budu	KAPIT	Kapit Belaga Song	Ng. Merit Sg. Asap
SARIKEI	Sarikei Meradong Julau Pakan		MIRI	Miri  Marudi	Sibuti Niah, Suai Beluru, Long Lama
			LIMBANG	Limbang Lawas	Ng. Medamit Sundar, Trusan

**POPULATION BY SEX AND ADMINISTRATIVE DISTRICT-SARAWAK, 2000**

District	Male	Female	Total	Households	Living quarters
<b>SARAWAK</b>	<b>1,018,308</b>	<b>991,585</b>	<b>2,009,893</b>	<b>421,973</b>	<b>476,377</b>
Kuching	247,537	246,572	494,109	29,100	32,147
Bau	21,499	20,325	41,824	7,941	9,351
Lundu	13,950	13,395	27,345	5,513	6,957
Samarahan	23,583	23,383	46,966	8,452	9,810
Serian	40,002	39,630	79,632	15,841	18,217
Simunjan	18,852	18,435	37,287	7,716	8,298
Sri Aman	31,244	31,531	62,775	14,362	15,903
Lubok Antu	11,584	11,671	23,255	5,173	5,768
Betong	25,346	25,046	50,392	9,817	11,771
Saratok	21,510	21,489	42,999	8,570	9,921
Sarikei	28,664	28,328	56,992	12,817	15,248
Maradong	14,138	14,794	28,932	6,193	6,684
Daro	7,449	7,398	14,847	3,066	3,009
Julau	16,241	15,672	31,913	6,722	7,459
Sibu	104,000	105,012	209,012	31,486	31,872

District	Male	Female	Total	Households	Living quarters
Dalat	11,313	12,089	23,402	4,996	5,714
Mukah	23,208	22,016	45,224	9,570	10,871
Kanowit	13,228	13,915	27,143	6,097	7,549
Bintulu	73,693	65,319	139,012	31,865	36,324
Tatau	12,225	11,016	23,241	5,729	6,592
Kapit	28,166	28,543	56,709	12,324	13,196
Song	9,562	9,674	19,236	3,885	4,196
Belaga	12,778	10,118	22,896	5,347	6,130
Miri	89,675	87,201	176,876	37,379	42,886
Marudi	37,333	34,380	71,713	15,347	16,690
Limbang	20,400	19,417	39,817	8,080	8,942
Lawas	17,054	15,672	32,726	6,642	7,265
Matu	5,268	5,897	11,183	2,416	2,667
Asajaya	14,477	14,036	28,513	5,284	5,847

Source: *Population and Housing Census of Malaysia 2000*

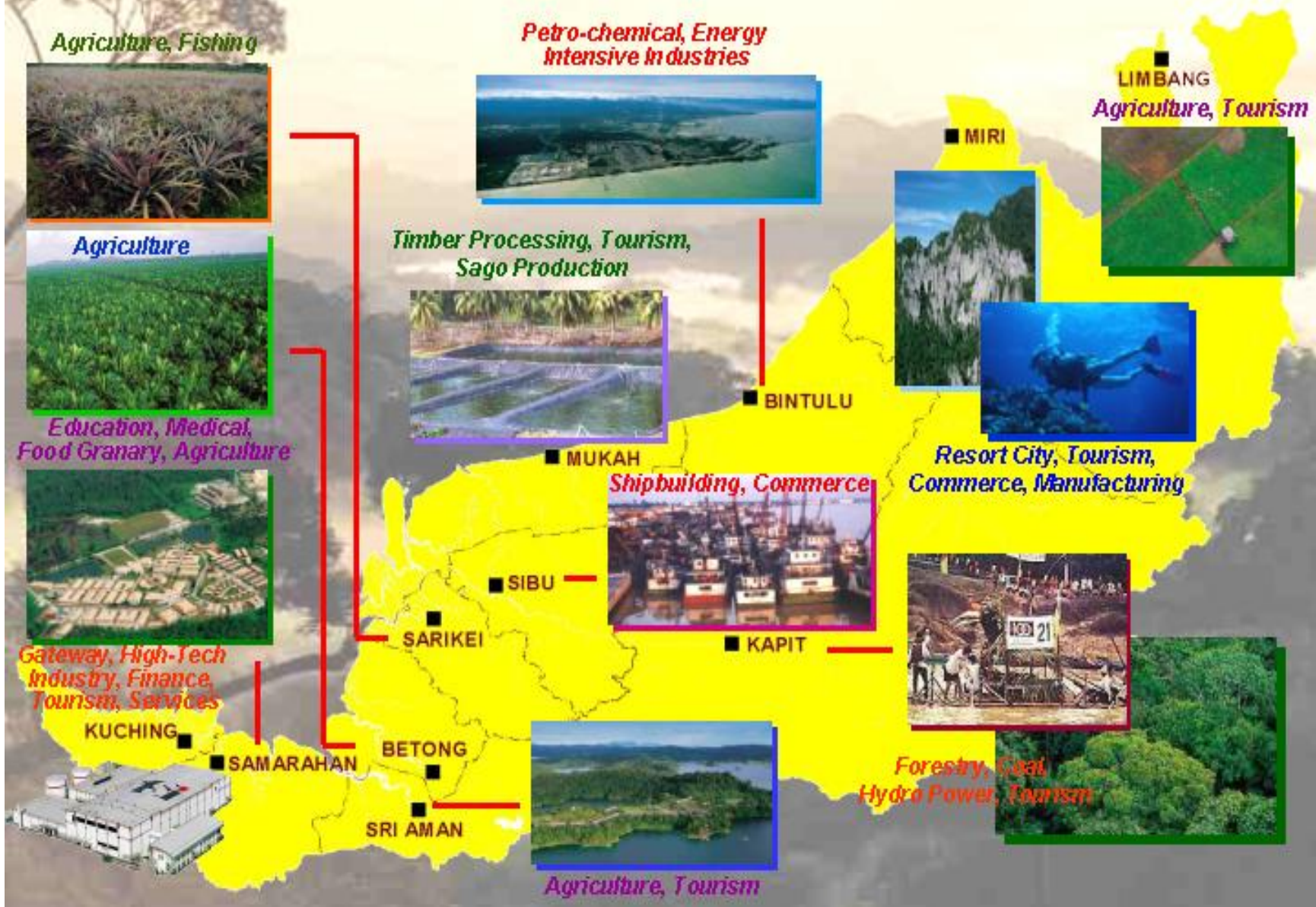
Note: Figures presented in this table have not been adjusted for under-enumeration.



# SARAWAK'S ECONOMIC ACTIVITIES

CAPITALISING ON THE STRENGTH OF EACH REGION

- Kuching - Capital City, Principal Gateway, High-Tech Industry, Commerce, Finance, Tourism & Services
- Samarahan - Academic & Research Centre (UNIMAS, UITM), Medical (SIMC), Food Granary & Agriculture Processing
- Sri Aman - Agriculture & Tourism
- Betong - Agriculture & IADP
- Sarikei - Agriculture & Fishing Industry
- Sibu - Timber-based industry, Shipbuilding, Commerce
- Mukah - Timber Processing, Tourism, Fishery, Agriculture & Sago Production



**POPULATION DISTRIBUTION BY STRATUM**

YEAR	1980			1991			2000 *		
DIVISION / DISTRICT	Urban	Rural	Total	Urban	Rural	Total	Urban	Rural	Total
Kuching	72,555	226,775	299,330	277,905	91,295	369,200	423,873	72,123	495,996
Lundu	-	21,576	21,576	-	24,493	24,493	-	27,376	24,376
Bau	-	31,449	31,449	-	35,958	35,958	-	42,132	42,132
<b>Kuching Division</b>	<b>72,555</b>	<b>279,800</b>	<b>352,355</b>	<b>277,905</b>	<b>151,746</b>	<b>429,651</b>	<b>423,873</b>	<b>141,631</b>	<b>564,504</b>
Samarahan	-	-	-	-	46,583	46,583	23,329	23,872	47,201
Serian	-	64,542	64,542	-	71,874	71,874	-	80,061	80,061
Simunjan	-	34,914	34,914	-	45,971	45,971	-	37,561	37,561
Asajaya	-	-	-	-	-	-	-	28,540	28,540
<b>Samarahan Division</b>	<b>-</b>	<b>99,456</b>	<b>99,456</b>	<b>-</b>	<b>164,428</b>	<b>164,428</b>	<b>23,329</b>	<b>170,034</b>	<b>193,363</b>
Sri Aman	-	65,589	65,589	18,503	40,136	58,639	21,842	41,113	62,955
Lubok Antu	-	19,735	19,735	-	22,234	22,234	-	23,266	86,221
<b>Sri Aman Division</b>	<b>-</b>	<b>85,324</b>	<b>85,324</b>	<b>18,503</b>	<b>62,370</b>	<b>80,873</b>	<b>21,842</b>	<b>63,379</b>	<b>83,221</b>
Sarikei	12,618	28,540	41,158	21,156	28,475	49,631	25,038	31,954	56,992
Meradong	-	27,028	27,028	-	26,957	26,957	-	28,932	28,932
Julau	-	26,240	26,240	-	28,104	28,104	-	31,913	31,913
<b>Sarikei Division</b>	<b>12,618</b>	<b>81,808</b>	<b>94,426</b>	<b>21,156</b>	<b>83,536</b>	<b>104,692</b>	<b>25,038</b>	<b>92,799</b>	<b>117,837</b>
Sibu	85,231	45,328	130,559	133,479	36,920	170,399	166,322	42,690	209,012
Kanowit	-	26,690	26,690	-	25,380	25,380	-	24,205	27,205
<b>Sibu Division</b>	<b>85,231</b>	<b>72,018</b>	<b>157,249</b>	<b>133,479</b>	<b>62,300</b>	<b>195,779</b>	<b>166,322</b>	<b>69,895</b>	<b>236,217</b>
Bintulu	-	54,800	54,800	51,862	34,270	86,138	102,761	35,508	138,269
Tatau	-	-	-	-	21,124	21,124	-	22,865	22,865
<b>Bintulu Division</b>	<b>-</b>	<b>54,800</b>	<b>54,800</b>	<b>51,862</b>	<b>55,394</b>	<b>107,256</b>	<b>102,761</b>	<b>58,373</b>	<b>161,134</b>
Kapit	-	35,847	35,847	-	55,608	55,608	13,541	44,299	57,840
Song	-	15,528	15,528	-	17,578	17,578	-	19,129	19,129
Belaga	-	11,497	11,497	-	22,284	22,284	-	22,864	22,864
<b>Kapit Division</b>	<b>-</b>	<b>62,872</b>	<b>62,872</b>	<b>-</b>	<b>95,468</b>	<b>95,486</b>	<b>13,541</b>	<b>86,292</b>	<b>99,833</b>
Miri	52,125	43,374	95,499	102,878	58,495	161,373	167,535	52,036	219,571
Marudi	-	49,219	49,219	-	71,958	71,958	-	71,412	71,412
<b>Miri Division</b>	<b>52,125</b>	<b>92,593</b>	<b>144,718</b>	<b>102,878</b>	<b>130,453</b>	<b>233,331</b>	<b>167,535</b>	<b>123,448</b>	<b>290,983</b>
Limbang	-	24,047	24,047	11,054	22,845	33,899	18,991	20,750	39,741
Lawas	-	19,777	19,777	-	29,276	29,276	-	32,663	32,669
<b>Limbang Division</b>	<b>-</b>	<b>43,824</b>	<b>43,824</b>	<b>11,054</b>	<b>52,121</b>	<b>63,175</b>	<b>-</b>	<b>53,419</b>	<b>72,410</b>
Matu	-	-	-	-	9,154	9,154	-	11,179	11,179
Daro	-	16,387	16,387	-	13,179	13,179	-	53,419	14,847
Dalat	-	20,160	20,160	-	22,022	22,022	-	23,402	23,402
Mukah	-	33,205	33,205	-	41,831	41,831	-	45,224	45,224
<b>Mukah Division</b>	<b>-</b>	<b>69,752</b>	<b>66,752</b>	<b>-</b>	<b>86,186</b>	<b>86,186</b>	<b>-</b>	<b>94,652</b>	<b>94,652</b>
Saratok	-	33,956	33,956	-	37,939	37,939	-	42,999	42,999
Betong	-	36,821	26,821	-	43,993	43,993	-	51,463	51,463
<b>Betong Division</b>	<b>-</b>	<b>70,777</b>	<b>70,777</b>	<b>-</b>	<b>81,932</b>	<b>81,932</b>	<b>-</b>	<b>94,462</b>	<b>94,462</b>
<b>TOTAL</b>	<b>222,529</b>	<b>1,013,024</b>	<b>1,235,553</b>	<b>616,837</b>	<b>1,025,934</b>	<b>1,642,771</b>	<b>963,232</b>	<b>1,049,384</b>	<b>2,012,616</b>

Note: Census Figure (Figure of the other years was not available)

\* Figures presented in this table have not been adjusted for under-enumeration

Source: Year Book of Statistics 1989/1993/1996/2000

Vital Statistics Sarawak 1996

Population Census 2000

**SARAWAK: TOTAL POPULATION BY ETHNIC GROUP AND ADMINISTRATIVE DISTRICT, 2000**

<b>Administrative District</b>	<b>Malay</b>	<b>Iban</b>	<b>Bidayuh</b>	<b>Melanau</b>	<b>Other Bumiputera</b>	<b>Chinese</b>	<b>Others</b>	<b>Non Malaysia Citizens</b>	<b>Total</b>
<b>Kuching</b>	180,957	47,597	63,943	3,608	3,301	197,955	3,434	8,579	509,374
Bau	3,583	648	29,215	64	146	9,205	87	242	43,190
Lundu	9,328	3,750	10,717	86	69	3,539	49	532	28,070
<b>Samarahan</b>	27,190	7,516	49,117	506	601	8,682	225	210	48,068
Serian	9,519	12,147	307	149	180	10,204	115	611	82,042
Simunjan	19,342	16,673	453	72	52	1,475	132	45	38,098
<b>Sri Aman</b>	17,748	37,337	15	247	111	8,262	30	287	64,475
Lubok Antu	694	20,729	73	15	40	2,262	5	148	23,966
<b>Sarikei</b>	29,919	18,764	162	76	66	2,321	11	107	51,426
Maradong	17,641	22,103	67	134	59	2,892	43	96	43,035
Julau	8,115	16,934	203	9,501	111	22,640	29	1,510	59,043
<b>Sibu</b>	4,383	12,606	134	1,572	86	11,052	20	63	29,917
Kanowit	749	869	12	13,096	31	490	3	18	15,268
<b>Bintulu</b>	256	31,034	80	116	85	1,070	6	21	32,668
Tatau	20,664	53,104	1,505	14,514	1,131	119,550	248	7,390	218,106
<b>Kapit</b>	407	8,129	28	13,946	72	1,486	6	78	24,152
Song	1,326	24,637	157	15,665	267	3,416	78	636	46,182
Belaga	859	23,168	57	355	96	3,408	9	30	27,982
<b>Miri</b>	13,981	56,424	1,923	16,614	7,025	28,995	660	17,807	143,429
Marudi	991	15,154	123	1,397	2,450	1,572	63	2,193	23,943
<b>Limbang</b>	1,657	47,900	274	961	1,848	4,679	42	1,069	58,430
Lawas	731	17,865	69	85	103	933	9	11	19,806
<b>Betong</b>	1,027	2,820	105	215	17,072	1,352	56	964	23,611
Saratok	41,559	65,102	3,692	9,447	20,568	70,993	1,840	15,030	228,231
<b>Mukah</b>	4,325	25,547	637	430	34,016	6,190	322	2,455	73,922
Dalat	10,122	11,154	271	195	11,869	6,338	147	863	40,959
Matu	10,933	927	168	125	16,112	3,269	424	1,645	33,603
Daro	544	676	7	9,732	37	468	3	31	11,498
Asajaya	23,720	2,421	119	61	86	2,532	7	66	29,012
<b>Total</b>	<b>462,270</b>	<b>603,735</b>	<b>166,756</b>	<b>112,984</b>	<b>117,690</b>	<b>537,230</b>	<b>8,103</b>	<b>62,738</b>	<b>2,071,506</b>

Source: Yearbook of Statistic Sarawak, 2002

**SARAWAK: POPULATION BY AGE GROUP 2003 (e)**

<b>Age Group</b>	<b>1991 ('000)</b>	<b>2000 ('000)</b>	<b>2003 (e) ('000)</b>
0 - 4	223.2	265.6	277.9
5 - 9	210.1	231.5	250.5
10 - 14	192.1	213.0	222.4
15 - 19	180.3	196.9	205.7
20 - 24	166.6	176.7	190.1
25 - 29	156.4	173.0	176.0
30 - 34	129.6	164.2	166.8
35 - 39	110.4	147.9	158.9
40 - 44	82.2	127.1	139.2
45 - 49	68.3	102.7	116.0
50 - 54	52.2	79.9	92.6
55 - 59	43.3	59.5	69.1
60 - 64	36.1	44.7	51.6
65 - 69	25.4	34.6	37.7
70+	41.9	54.2	59.9
<b>Total</b>	<b>1,718.1</b>	<b>2,071.5</b>	<b>2,214.4</b>

*Source: Monthly Statistical Bulletin Sarawak, July 2003*

## SARAWAK : LABOUR FORCE, EMPLOYMENT AND UNEMPLOYMENT

	1990	1995	1996	1997	1998	1999	2000	2001	2002 (e)
Labour Participation Rate	77.4	72.5	73.5	71.4	69.9	70.5	71.9	70.3	71.0
Labour Force ('000)	776.3	828.7	869.1	865.5	868.1	906.9	935.2	931.2	924.0
Employment ('000)	698.9	789.1	831.5	831.5	824.0	865.0	893.3	895.8	887.0
Unemployment ('000)	77.4	39.6	37.6	34.0	44.1	41.9	41.9	35.4	37.0

Note : e - estimated

*Source: Malaysia-Labour Force Survey Report various issues  
Yearbook of Statistic Sarawak, 2002  
Monthly Statistical Bulletin, Sarawak July 2003*

**SARAWAK AND MALAYSIA: PERCENTAGE DISTRIBUTION OF EMPLOYED PERSONS BY INDUSTRY**

SECTOR	1990 (%)		1995 (%)		1997 (%)		1998 (%)		1999 (%)		2000 (%)		2001 (%)		2002 (%)		
	M'sia	S'wak	M'sia	S'wak	M'sia	S'wak	M'sia	S'wak	M'sia	S'wak	M'sia	S'wak	M'sia	S'wak	M'sia	S'wak	
<b>Primary Sector :</b>																	
Agriculture, Forestry, Livestock and Fishing	26.0	47.1	20.0	37.4	17.3	33.3	18.8	34.4	18.4	29.6	18.4	34.7	15.4	32.1	14.9	31.4	
Mining & Quarrying	0.6	0.5	0.4	0.5	0.4	0.5	0.3	0.3	0.4	0.4	0.3	0.3	0.3	1.0	0.3	0.6	
<b>Secondary Sector :</b>																	
Manufacturing	19.9	9.1	23.3	11.1	23.4	14.8	22.2	12.6	22.5	14.2	22.8	13.9	22.0	12.0	21.7	11.6	
Construction	6.3	6.0	8.0	8.8	9.3	9.3	8.7	8.8	8.2	8.3	8.6	8.0	9.5	10.3	9.5	10.4	
<b>Tertiary Sector:</b>																	
Electricity, Gas and Water	0.7	0.8	0.6	0.7	0.6	0.7	0.6	0.7	0.6	0.7	0.5	0.6	0.6	0.4	0.5	0.6	
Wholesale and Retail Trade, Restaurants and Hotels	18.2	14.3	17.9	15.7	18.4	15.1	18.8	16.2	18.8	17.5	19.2	17.0	21.9	17.7	22.2	19.5	
Transport, Storage and Communication	4.5	2.8	4.7	3.5	4.9	4.4	4.9	4.0	4.8	4.4	4.5	3.6	4.9	4.8	5.2	4.1	
Financing, Insurance, Real Estate And Business Services	3.9	2.2	4.8	3.4	5.2	3.7	5.0	3.4	5.3	4.0	5.0	3.7	6.2	4.6	6.7	4.3	
Community, Social, Personal Services, and Other Services	19.9	17.2	20.3	18.9	20.5	18.2	20.8	19.6	21.0	20.9	20.7	18.2	19.1	16.7	19.1	17.5	
<b>Total</b>	<b>100.0</b>	<b>100.0</b>	<b>100.0</b>	<b>100.0</b>	<b>100.0</b>	<b>100.0</b>	<b>100.0</b>	<b>100.0</b>	<b>100.0</b>	<b>100.0</b>	<b>100.0</b>	<b>100.0</b>	<b>100.0</b>	<b>100.0</b>	<b>100.0</b>	<b>100.0</b>	
<b>TOTAL EMPLOYMENT</b>	<b>6,685,000</b>	<b>698,900</b>	<b>7,915,400</b>	<b>789,100</b>	<b>8,569,200</b>	<b>831,500</b>	<b>8,883,600</b>	<b>824,300</b>	<b>9,151,500</b>	<b>865,000</b>	<b>9,387,500</b>	<b>893,300</b>	<b>9,567,309</b>	<b>895,814</b>	<b>9,886,200</b>	<b>924,000</b>	

Source : Malaysia Labour Force Survey Report

Monthly Statistical Bulletin, Sarawak July 2003

Monthly Statistical Bulletin, Malaysia July 2003

## SARAWAK: LAND USE

LAND USE CLASSES	1991	
	Sq. Km	(%)
1. Settlement and associated non-agricultural lands	<b>360</b>	<b>0.3</b>
2. Horticultural lands (mainly miscellaneous cultivation and including small areas of fruit trees)	<b>468</b>	<b>0.4</b>
3. Tree, palm and other permanent crops	<b>2,476</b>	<b>2.0</b>
Rubber	1,448	1.2
Oil Palm	309	0.3
Coconut	434	0.4
Pepper	114	0.1
Sago	171	0.1
4. Crop land	<b>37,076</b>	<b>30.1</b>
Wet paddy	559	0.5
Shifting cultivation	36,517	29.6
5. Unused land (secondary growth)	<b>634</b>	<b>0.5</b>
6. Swamp forest	<b>12,622</b>	<b>10.2</b>
Mixed swamp forest	9,714	7.9
Alan	2,334	1.9
Padang Paya	574	0.5
7. Dry forest land	<b>68,226</b>	<b>55.4</b>
Hill forest	65,090	52.8
Kerangas forest	2,869	2.3
Riverain forest	259	0.2
Beach forest	8	0.01
8. Swamp (Paya) (including fresh and salt water and mangrove and nipah)	<b>1,390</b>	<b>1.1</b>
<b>TOTAL</b>	<b>123,252</b>	<b>100</b>

Source: Yearbook of Statistics, Sarawak 2001

Planimeter Measurement of Land Use Map, Sarawak 1991 Edition 3 (Revised 1/93)

## SARAWAK: NATURAL RESOURCES

1	Coastline	1,051 km
2	Land with Agriculture Potential	2.2 million ha
3	Land under Forest Cover	8.2 million ha
4	Area under Peat Soil	1.7 million ha
5	Marine fish production potential	670,135 tonne per year
6	Hydropower potential	12,446 MW
7	Surface water	306 billion M <sup>3</sup>
8	Minerals	Approx. reserves
	<ul style="list-style-type: none"> <li>● Petroleum</li> </ul>	1,298 million barrels
	<ul style="list-style-type: none"> <li>i) crude oil</li> </ul>	848 million barrels
	<ul style="list-style-type: none"> <li>ii) condensate</li> </ul>	450 million barrels
	<ul style="list-style-type: none"> <li>● Gas</li> </ul>	40.862 trillion S.C.F
	<ul style="list-style-type: none"> <li>● Coal</li> </ul>	1,483 million tonne
	<ul style="list-style-type: none"> <li>● Silica Sand</li> </ul>	56.6 million tonne
	<ul style="list-style-type: none"> <li>● Kaolin clay</li> </ul>	21.8 million tonne
9	Biodiversity	

Source : *Jabatan Mineral dan Geosains Malaysia, 2002*

*Jabatan Perikanan Laut Sarawak, 2001*

*Petroleum Nasional Berhad, 2002*

*Ministry of Planning & Resource Management, 2001*



## SARAWAK AND MALAYSIA: PLANTED AREA OF MAIN COPS ('000 HECTARES)

STATE	Oil Palm	%	Cocoa	%	Rubber	%	Paddy (Wet & Dry/Hill)	%
<b>MALAYSIA</b>								
1998	3,078.1	100	117.7	100	1,620.0	100	674.3	100
1999	3,313.4	100	100.9	100	1,591.9	100	692.4	100
2000	3,376.6	100	74.3	100	1,530.2	104	699.1	100
2001	3,499.0	100	57.9	100	1,389.3	100	673.6	100
2002 (p)	3,670.2	100	51.1	100	1,348.4	100	n.a.	n.a.
<b>SARAWAK</b>								
1998	248.5	8.1	28.4	12.9	175.0	14.7	127.6	18.9
1999	320.5	9.7	13.2	24.5	170.2	14.9	131.6	19.0
2000	330.4	9.78	6.8	9.19	168.5	15.22	130.9	18.7
2001 (p)	374.8	10.71	6.1	10.52	167.5	12.06	124.6	18.5
2002 (e)	452.0	n.a.	n.a.	n.a.	161.8	n.a.	134.0	n.a.
<b>SABAH</b>								
1998	842.5	27.4	70.5	66.0	87.0	3.1	42.6	6.3
1999	941.3	28.4	56.1	55.6	85.3	3.1	47.4	6.85
2000	1,000.8	29.64	52.2	70.2	87.0	5.5	48.9	6.99
2001 (p)	1,027.3	29.36	n.a.	n.a.	85.8	6.2	48.1	7.1
2002	n.a.	n.a.	n.a.	n.a.	n.a.	n.a.	n.a.	n.a.

\* Old rubber area and mostly non-productive (estate and smallholding)

Source: *Monthly Statistical Bulletin, Malaysia 2003*

*Yearbook of Statistics, Malaysia 2002, Yearbook of Statistics, Sarawak 2002 & Yearbook of Statistics, Sabah 2002*

note: (p) preliminary

n.a. not available

### SARAWAK: SETTLED AGRICULTURE

PERMANENT CROPS	1995		1996		1997		1998		1999		2000		2001(p)	
	HECTARE	Share %	HECTARE	Share %	HECTARE	Share %	HECTARE	Share %	HECTARE	Share %	HECTARE	Share %	HECTARE	Share %
OIL PALM	172,375	29.79	172,686	29.84	147,007	26.3	248,430	37.7	320,476	43.8	330,387	41.47	378,828	52.93
PEPPER	10,168	1.76	9,806	1.69	10,178	1.8	11,373	1.7	12,196	1.7	13,327	1.67	13,344	1.86
RUBBER	172,375	29.79	172,686	29.84	173,567	31.1	174,993	26.5	170,172	23.2	168,523	21.16	167,523	23.41
COCOA	28,732	4.97	23,218	4.01	16,031	2.9	13,283	2.0	10,895	1.5	6,832	0.86	6,093	0.85
SAGO	33,853	5.83	43,760	7.56	59,467	10.7	58,135	8.8	60,550	8.3	61,161	7.68	n.a.	n.a.
COCONUT	28,105	4.86	27,626	4.77	25,590	4.6	25,683	3.9	26,334	3.6	25,578	3.21	25,262	3.53
WET & DRYHILL PADI	132,931	22.98	128,931	22.28	126,500	22.7	127,614	19.3	131,608	18.0	130,881	16.43	124,644	17.42
<b>TOTAL</b>	<b>578,539</b>	<b>100.00</b>	<b>578,713</b>	<b>100.00</b>	<b>558,340</b>	<b>100.00</b>	<b>659,511</b>	<b>100.00</b>	<b>732,231</b>	<b>100.00</b>	<b>736,689</b>	<b>100.00</b>	<b>715,694</b>	<b>100.00</b>

Source: Yearbook of Statistics Sarawak, 2001  
Department of Agriculture

## SARAWAK: HYDRO-ELECTRIC POWER

<i>HEP</i>	<i>Capacity</i>
<b>Existing HEP</b> Batang Ai	92 MW
<b>Under Implementation</b> Bakun	2,400 MW
<b>Proposed HEP</b> Murum	990 MW
Baleh	950 MW
Pelagus	770 MW

Note:

- (a) Sarawak has the potential of generating hydro-electric power estimated at 65,000 GW annually.
- (b) The Batang Ai Dam is the first hydro-electric power project in the State. The dam, located in the Sri Aman Division caters for the State demand only.
- (c) The Bakun Dam, the single largest HEP project in Malaysia is located in the hinterland of Sarawak in the Kapit Division. It will cater for the energy demand in the country as well as, for export.

**SARAWAK: ELECTRICITY - INSTALLED CAPACITY**

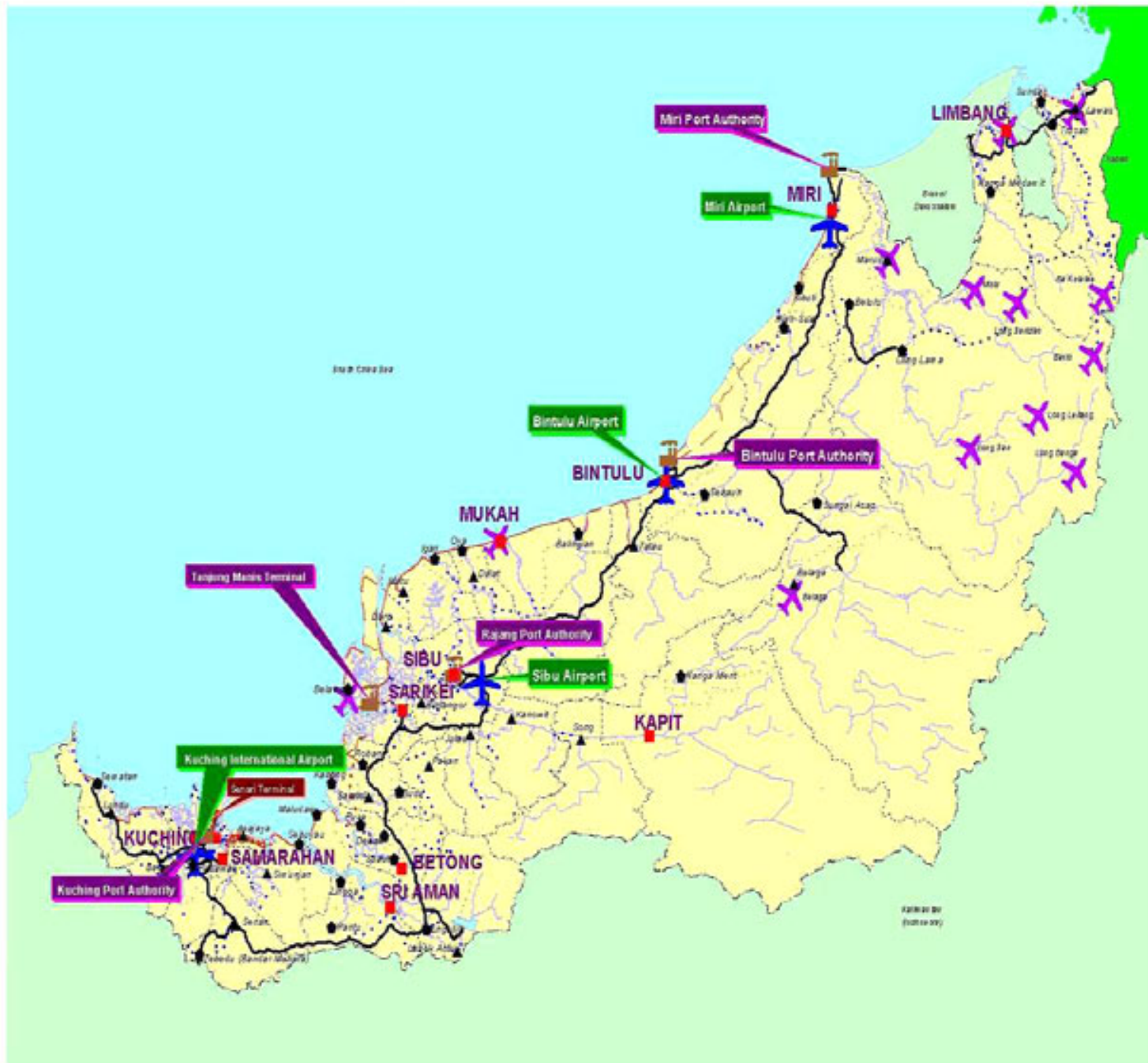
<b>YEAR</b>	<b>Generation Mix</b>								
	<b>Diesel</b>		<b>Hydro</b>		<b>Gas</b>		<b>Coal</b>		<b>Total</b>
	<b>MW</b>	<b>%</b>	<b>MW</b>	<b>%</b>	<b>MW</b>	<b>%</b>	<b>MW</b>	<b>%</b>	<b>MW</b>
1996	229.0	41	97.0	17	235.0	42	0	0	<b>561</b>
1997	231.0	37	97.0	15	299.0	48	0	0	<b>627</b>
1998	234.0	24	97.0	10	519.0	55	100.0	11	<b>950</b>
1999	158.0	18	97.0	11	511.0	59	100.0	12	<b>866</b>
2000	167.0	19	101.0	11	511.0	58	100.0	11	<b>879</b>
2001	166.6	19	101.3	12	488.5	57	100.0	12	<b>856</b>
2002	167.1	20	101.3	12	488.5	57	100.0	12	<b>857</b>

Source: Sarawak Electricity Supply Corporation, 2003

**SARAWAK AND MALAYSIA: ROAD BY SURFACE TYPE (KILOMETRES)**

<b>State</b>	<b>Year</b>	<b>Paved</b>	<b>Gravel</b>	<b>Earth</b>	<b>Total</b>	<b>State</b>	<b>Year</b>	<b>Paved</b>	<b>Gravel</b>	<b>Earth</b>	<b>Total</b>
<b>MALAYSIA (329,735 SQ. Km.)</b>	1991	46,635	11,216	5,889	63,740	<b>SARAWAK (124,449 SQ. Km.)</b>	1991	3,623	2,459	869	6,951
	<i>Share (%)</i>	73.2	17.6	9.2	100		<i>Share (%)</i>	52.1	35.4	12.5	100
	1995	45,131	11,907	4,016	61,054		1995	4,860	2,534	878	8,272
	<i>Share (%)</i>	73.9	19.5	6.6	100		<i>Share (%)</i>	58.8	30.6	10.6	100
	1996	46,166	12,293	3,935	62,394		1996	4,907	2,506	865	8,278
	<i>Share (%)</i>	74	19.7	6.3	100		<i>Share (%)</i>	59.3	30.3	10.4	100
	1997	47,542	12,342	3,969	63,853		1997	5,257	2,425	775	8,457
	<i>Share (%)</i>	74.5	19.3	6.2	100		<i>Share (%)</i>	62.2	28.7	9.2	100
1998	50,215	12,165	4,057	66,437	1998	5,579	2,476	752	8,807		
<i>Share (%)</i>	75.6	18.3	6.1	100	<i>Share (%)</i>	63.3	28.1	8.5	100		
1999	48,720	12,029	3,937	64,686	1999	6,066	2,495	682	9,243		
<i>Share (%)</i>	75.3	18.6	6.1	100	<i>Share (%)</i>	65.6	27	7.4	100		
2000	50,621	11,993	3,831	66,445	2000	6,521	2,453	538	9,512		
<i>Share (%)</i>	76.2	18	5.8	100	<i>Share (%)</i>	68.6	25.8	5.7	100		
2001	n.a.	n.a.	n.a.	n.a.	2001	7,070	2,183	551	9,804		
<i>Share (%)</i>					<i>Share (%)</i>	72.1	22.3	5.6	100		

Source: Yearbook of Statistics, Sarawak 2002



## SARAWAK: INFRASTRUCTURE

### Administrative HQs

- Divisional
- ▲ District
- ◆ Sub-District

### Existing Ports & Terminal

- Ports
- Terminal

### Existing Airport Types

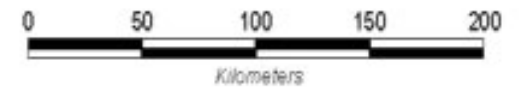
- ✈ Main Airports
- ✈ Short Takeoff Landings

### Road Types

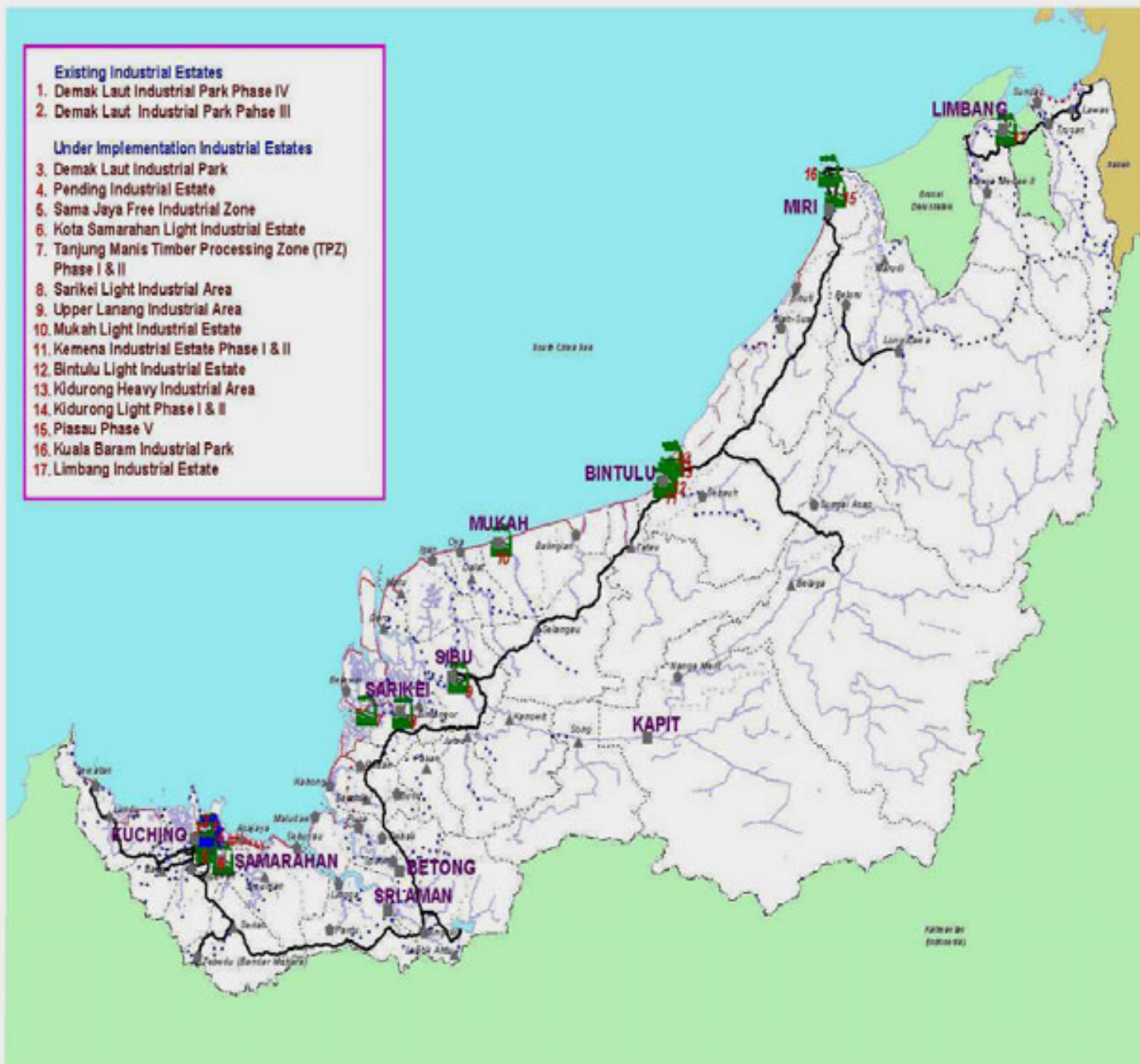
- Existing Trunk Road
- Existing Coastal Road
- - - 7MP Approved Trunk Road
- - - 7MP Approved Coastal Road
- ..... 8MP Proposed Trunk Road
- ..... 8MP Proposed Feeder Road
- ..... 8MP Proposed Coastal Road

### Administrative Boundaries

- ..... International
- State
- ..... Division
- ..... District
- ..... Sub-district



DIGITAL SPATIAL INFORMATION MANAGEMENT SECTOR  
STATE PLANNING UNIT  
CHIEF MINISTER'S DEPARTMENT  
2003



- Existing Industrial Estates**
1. Demak Laut Industrial Park Phase IV
  2. Demak Laut Industrial Park Pahse III
- Under Implementation Industrial Estates**
3. Demak Laut Industrial Park
  4. Pending Industrial Estate
  5. Sama Jaya Free Industrial Zone
  6. Kota Samarahan Light Industrial Estate
  7. Tanjung Manis Timber Processing Zone (TPZ) Phase I & II
  8. Sarikei Light Industrial Area
  9. Upper Lanang Industrial Area
  10. Mukah Light Industrial Estate
  11. Kemena Industrial Estate Phase I & II
  12. Bintulu Light Industrial Estate
  13. Kidurong Heavy Industrial Area
  14. Kidurong Light Phase I & II
  15. Piasau Phase V
  16. Kuala Baram Industrial Park
  17. Limbang Industrial Estate

## SARAWAK: INDUSTRIAL ESTATES

### Administrative HQs

- Divisional
- ▲ District
- ◆ Sub-District

### Industrial Estates

- Existing
- Under Implementation

### Road Types

- Existing Trunk Road
- Existing Coastal Road
- 7MP Approved Trunk Road
- 7MP Approved Coastal Road
- ..... 8MP Proposed Trunk Road
- ..... 8MP Proposed Coastal Road

### Administrative Boundaries

- International
- State
- Division
- District
- Subdistrict



DIGITAL SPATIAL INFORMATION MANAGEMENT SECTOR  
 STATE PLANNING UNIT  
 CHIEF MINISTER'S DEPARTMENT  
 2003



**ECONOMIC**  
**INDICATORS**

---



**SARAWAK AND MALAYSIA : GROSS DOMESTIC PRODUCT 1987-2003e**

Year	GDP IN CONSTANT 1987 PRICES (RM MILLION)		ANNUAL GROWTH RATE (%) (at 1987 constant prices)		GDP IN CURRENT PRICES (RM MILLION)		ANNUAL GROWTH RATE (%) (Current Prices)	
	MALAYSIA	SARAWAK	MALAYSIA	SARAWAK	MALAYSIA	SARAWAK	MALAYSIA	SARAWAK
1987	81,085	8,108	-	-	80,609	10,118	13.3	14.1
1988	89,143	8,800	9.9	8.5	90,861	10,271	12.72	1.5
1989	97,219	9,338	9.1	6.1	102,587	11,382	12.91	10.8
1990	105,977	9,997	9.0	7.1	115,828	12,469	12.91	9.6
1991	116,093	10,941	9.5	9.4	129,559	13,951	11.85	11.9
1992	126,408	11,180	8.9	2.2	147,784	13,926	14.07	-0.2
1993	136,916	11,293	9.9	1.0	165,206	14,890	11.79	6.9
1994	151,713	11,846	9.2	4.9	190,274	16,919	15.17	13.6
1995	166,625	13,198	9.8	11.4	218,617	19,769	14.9	16.8
1996	183,292	14,597	10.0	10.6	253,732	19,330	16.1	-2.2
1997	196,714	15,686	7.3	7.5	281,795	22,097	11.1	14.3
1998	182,234	16,345	-7.4	4.2	283,243	22,523	0.5	1.9
1999	193,317	16,246	6.1	-0.6	300,340	25,158	6	11.7
2000	209,959	16,763	8.6	3.2	342,612	30,919	14.1	22.9
2001	210,640	17,829	0.3	6.4	334,309	30,140	-2.4	-2.5
2002 (e)	219,309	18,983	4.1	6.5	360,658	32,000	7.9	6.2
2003 (f)	229202*	19,938	4.5	5.0	382,093*	33,430	5.9	4.5

Source: Yearbook of Statistics Sarawak/Malaysia 2002

\* forecast by Bank Negara Malaysia

Note: (e) estimate; (f) forecasted

**SARAWAK AND MALAYSIA: GDP PER CAPITA 1987-2003 (e)**

YEAR	GDP Per capita (RM) (at 1987 Constant Prices)		GDP Per capita (RM) (at Current Prices)	
	MALAYSIA	SARAWAK	MALAYSIA	SARAWAK
1987	4,906	5,221	4,877	6,516
1988	2,562	5,524	5,363	6,447
1989	5,602	5,718	5,911	6,970
1990	5,966	5,985	6,520	7,456
1991	6,385	6,367	7,126	8,119
1992	6,791	6,374	7,939	7,938
1993	7,101	6,288	8,444	8,291
1994	7,543	6,431	9,461	9,185
1995	8,058	7,001	10,567	10,486
1996	8,659	7,605	11,986	10,071
1997	9,079	8,027	13,006	11,307
1998	8,216	8,213	12,770	11,317
1999	8,512	8,153	13,225	12,567
2000	8,995	8,402	14,641	15,451
2001	8,773	8,430	13,924	14,703
2002 (e)	8,940	8,790	14,703	14,819
2003 (e)	9,151	9,041	15,254	15,163

Source: Yearbook of Statistics Sarawak, 1980-2002  
Yearbook of Statistics Malaysia, 1985-2002

**SARAWAK: GROSS DOMESTIC PRODUCTS BY SECTOR (CONSTANT) 1996-2003(e)**

	1996			2000			2001			2002 (e)*			2003 (e)*		
	VALUE	Growth	Share	VALUE	Growth	Share	VALUE	Growth	Share	VALUE	Growth	Share	VALUE	Growth	Share
	RM Million	(%)	(%)	RM Million	(%)	(%)	RM Million	(%)	(%)	RM Million	(%)	(%)	RM Million	(%)	(%)
<b>PRIMARY SECTOR</b>	<b>7,480</b>	<b>14.29</b>	<b>51.24</b>	<b>8,925</b>	<b>4.2</b>	<b>53.2</b>	<b>9,164</b>	<b>2.7</b>	<b>51.4</b>	<b>9,912.7</b>	<b>8</b>	<b>52.3</b>	<b>10,505.3</b>	<b>6</b>	<b>52.6</b>
Agriculture, Livestock, Fishery	1,114	19.66	7.10	1,565	1.9	9.3	1,606	2.6	9.0	1,889.0	17.6	10.0	2,141.7	13.4	10.7
Forestry	1,345	-6.92	8.57	1,194	8.9	7.1	1,019	-14.7	5.7	1,059.7	4.0	5.6	1,086.2	2.5	5.4
Mining and Quarrying	5,021	20.44	32.01	6,166	3.9	36.8	6,539	6.0	36.7	6,964.0	6.5	36.7	7,277.4	4.5	36.5
<b>SECONDARY SECTOR</b>	<b>2,562</b>	<b>3.31</b>	<b>16.33</b>	<b>3,547</b>	<b>10.8</b>	<b>21.2</b>	<b>3,544</b>	<b>-0.1</b>	<b>19.9</b>	<b>3,638.3</b>	<b>2.7</b>	<b>19.2</b>	<b>3,799.1</b>	<b>4.4</b>	<b>19.0</b>
Manufacturing	2,111	11.58	13.46	3,011	12.6	18.0	2,995	2.0	16.8	3,039.9	1.7	16.0	3,176.7	1.7	15.9
Construction	451	-23.30	2.88	536	1.9	3.2	549	2.4	3.1	598.4	9.0	3.2	622.4	4.0	3.1
<b>TERTIARY SECTOR</b>	<b>4,555</b>	<b>9.15</b>	<b>29.04</b>	<b>4,932</b>	<b>3.6</b>	<b>29.4</b>	<b>4,569</b>	<b>-7.4</b>	<b>25.6</b>	<b>4,824.4</b>	<b>6.0</b>	<b>25.5</b>	<b>5,024.8</b>	<b>3.8</b>	<b>25.2</b>
Transport, Storage and Communication	927	22.30	5.91	1,035	2.5	6.2	1,014	-2.0	5.7	1,064.7	4.5	5.6	1,096.7	4.5	5.5
Wholesale and Retail	1,038	11.61	6.62	1,181	7.7	7.0	1,197	1.4	6.7	1,256.8	6.0	6.6	1,275.7	6.0	6.4
Finance, Insurance, Real Estate & Business Services	639	18.77	4.07	580	3.8	3.5	577	-0.5	3.2	605.9	7.3	3.2	618.0	7.3	3.1
Government Services	938	1.63	5.98	1,150	3.8	6.9	1,230	7.0	6.9	1,308.8	6.4	6.9	1,397.8	6.8	7.0
Other Services	1,013	-1.07	6.49	986	0.0	5.9	551	-44.1	3.1	606.2	3.2	3.2	636.6	5.0	3.2
<b>Total</b>	<b>14,597</b>	<b>10.60</b>	<b>100</b>	<b>16,763</b>	<b>3.2</b>	<b>100</b>	<b>17,829</b>	<b>6.4</b>	<b>100</b>	<b>18,983.0</b>	<b>6.5</b>	<b>100</b>	<b>19,938.0</b>	<b>5.0</b>	<b>100</b>

Source: Annual Statistical Bulletins Sarawak, 1980 - 1993

Yearbook of Statistics Sarawak 1997 - 2002

Note: \* conducted by State Planning Unit

(p) preliminary;

(e) estimate

**SARAWAK: EXPENDITURE ON GROSS DOMESTIC PRODUCT IN  
PURCHASER'S VALUE AT CURRENT PRICES 1996-2003 (e)**

Title	1996		1997		1998		1999		2000		2001		2002 (e)*		2003 (e)*	
	Value	Share	Value	Share	Value	Share	Value	Share	Value	Share	Value	Share	Value	Share	Value	Share
	RM Million	(%)	RM Million	(%)	RM Million	(%)	RM Million	(%)	RM Million	(%)	RM Million	(%)	RM Million	(%)	RM Million	(%)
1. Government Final Consumption Expenditure	1,920	9.93	2,034	9.20	1,987	8.82	2,434	9.6	2,710	8.8	3,109	10	3,300	10	3,500	10
2. Private Final Consumption Expenditure	7,039	36.41	7,210	32.63	7,498	33.29	7,735	30.4	8,026	25.9	8,223	26	8,400	26	9,000	27
3. Gross Fixed Capital Formation	2,793	14.45	2,726	12.34	2,171	9.64	2,522	9.9	2,700	8.7	3,708	12	4,100	13	4,430	13
4. Exports of Goods & Services	20,151	104.25	23,367	105.75	22,639	100.52	26,023	102.2	33,681	108.9	32,800	105	33,500	105	35,000	105
5. <b>Less:</b> Imports of Goods & Services	10,827	56.01	12,051	54.54	9,299	41.29	12,024	47.2	14,182	45.9	15,072	48	16,500	52	18,000	54
6. Gross Domestic Product in Purchasers' Value	<b>19,330</b>	<b>100.0</b>	<b>22,097</b>	<b>100.00</b>	<b>22,523</b>	<b>100.00</b>	<b>25,475</b>	<b>100.00</b>	<b>30,919</b>	<b>100.0</b>	<b>31,097</b>	<b>100.0</b>	<b>32,000</b>	<b>100</b>	<b>33,430</b>	<b>100</b>

Source: Yearbook of Statistics Sarawak 2002

\* State Planning Unit

**SARAWAK: APPROVED INVESTMENT VALUE**

<b>Year</b>	<b>TOTAL RM</b>
1996	5,055,011,449
1997	916,358,405
1998	1,737,833,951
1999	308,247,250
2000	8,253,340,475
2001	805,820,360
2002	1,045,554,695
2003 (Jan-June)	275,774,994

*Source: MIDA, MID*

**SARAWAK: LOANS GIVEN BY COMMERCIAL BANKS AND FINANCE COMPANIES  
1996 - 2003**

SECTOR	1996		1997		1998		1999		2000		2001		2002		2003 (Jan-June)	
	RM '000	Share (%)	RM '000	Share (%)	RM '000	Share (%)	RM '000	Share (%)	RM '000	Share (%)	RM '000	Share (%)	RM '000	Share (%)	RM '000	Share (%)
Agri, Hunting, Forestry & Fishing	1,192,118	7.9	1,522,089	8.1	1,647,980	8.7	1,565,314	8.9	1,759,782	9.6	2,117,955	9.8	2,063,692	9.3	2,120,390	9.3
Community, Soc & Personal Services	290,208	1.9	239,769	1.3	196,168	1.0	268,752	1.5	298,798	1.6	285,177	1.3	261,258	1.2	304,887	1.3
Construction	1,361,750	9.0	2,025,544	10.7	1,929,314	10.1	1,620,176	9.2	1,670,200	9.1	1,652,943	7.7	1,666,507	7.5	1,648,775	7.2
Credit Card	117,048	0.8	151,813	0.8	147,007	0.8	185,166	1.1	222,616	1.2	284,837	1.3	330,737	1.5	337,192	1.5
Electricity, Gas & Water Supply	9,501	0.1	149,019	0.8	174,549	0.9	83,596	0.5	70,942	0.4	97,204	0.5	75,225	0.3	70,977	0.3
Finance, Insurance, Real Estates & Business	1,230,557	8.2	1,577,529	8.4	1,234,760	6.5	1,325,884	7.6	1,411,714	7.7	1,540,552	7.1	1,453,819	6.5	1,338,454	5.9
Manufacturing	1,731,122	11.5	2,222,764	11.8	3,357,135	17.6	2,698,355	15.4	2,275,739	12.4	2,702,320	12.5	2,534,794	11.4	2,539,090	11.1
Mining & Quarrying	54,994	0.4	113,045	0.6	106,243	0.6	88,027	0.5	85,583	0.5	88,197	0.4	91,470	0.4	92,129	0.4
Personal Use	504,727	3.4	952,138	5.1	804,552	4.2	776,724	4.4	845,732	4.6	949,989	4.4	1,013,594	4.6	1,017,756	4.5
Purchase of Consumer Durable Goods	280,161	1.9	119,488	0.6	101,921	0.5	77,150	0.4	65,952	0.4	37,814	0.2	33,858	0.2	20,028	
0.1Purchase of Non-Residential Property	764,737	5.1	1,047,628	5.6	1,135,850	6.0	1,084,600	6.2	1,126,263	6.2	1,337,523	6.2	1,388,172	6.2	1,412,126	6.2
Purchase of Residential Property	1,395,520	9.3	1,558,364	8.3	1,839,209	9.7	2,036,252	11.6	2,411,873	13.2	3,333,165	15.4	3,775,276	17.0	4,032,298	17.6
Purchase of Securities	1,183,915	7.9	1,676,703	8.9	1,593,754	8.4	1,409,452	8.0	1,357,900	7.4	1,408,425	6.5	1,272,768	5.7	1,225,168	5.4
Purchase of Transport Vehicles	1,902,887	12.6	2,162,710	11.5	1,603,056	8.4	1,350,086	7.7	1,660,147	9.1	2,362,060	10.9	3,007,770	13.5	3,299,197	14.4
Sector Nec	535,272	3.6	252,897	1.3	158,934	0.8	191,805	1.1	154,646	0.8	255,776	1.2	184,060	0.8	274,750	1.2
Transport, Storage & Communication	605,599	4.0	761,864	4.0	761,934	4.0	610,190	3.5	474,974	2.6	658,685	3.1	603,016	2.7	614,485	2.7
Wholesale, Retail, Restaurants & Hotels	1,893,244	12.6	2,311,436	12.3	2,245,897	11.8	2,152,000	12.3	2,413,332	13.2	2,478,908	11.5	2,487,615	11.2	2,508,685	11.0
Purchase of Landed Property*							3,120,852	17.8	3,538,136	19.3	4,670,688	21.6	5,163,448	23.2	5,444,424	23.8
Real Estate*							534,726	3.1	482,126	2.6	575,840	2.7	518,509	2.3	517,440	2.3
<b>Loans in Sarawak</b>	<b>15,054,360</b>	<b>100</b>	<b>18,844,800</b>	<b>100</b>	<b>19,038,263</b>	<b>100</b>	<b>17,523,529</b>	<b>100</b>	<b>18,306,193</b>	<b>100</b>	<b>22,243,631</b>	<b>100</b>	<b>22,243,631</b>	<b>100</b>	<b>22864407</b>	<b>100</b>

Source : Bank Negara Malaysia

Note: Sector NEC - Not Else Where Classified

\* - component item of purchases of non-residential property

\*\* - component item of finance, insurance, real estates and business

### SARAWAK: CONSUMER PRICE INDEX (2000=100) INDEX NUMBERS FOR MAIN GROUPS

Period	Total	Inflation Rate	Food	Beverages & Tobacco	Clothing & Footwear	Gross, Rent Fuel & Power	Furniture, Furnishings & Household Equipment & Operation	Medical Care & Health Services	Transport & Communication	Recreation, Entertainment Educational Cultural & Services	Miscellaneous Goods & Services	Durable Goods	Semi Durable Goods	Non Durable Goods	Services
<b>WEIGHT</b>	<b>100.0</b>		<b>32.5</b>	<b>3.1</b>	<b>3.9</b>	<b>19.1</b>	<b>5.2</b>	<b>1.6</b>	<b>21.0</b>	<b>7.7</b>	<b>5.9</b>	<b>14.0</b>	<b>7.3</b>	<b>42.8</b>	<b>35.9</b>
1998	96.9		94.7	91.3	104.7	100.0	99.4	96.8	97.1	97.2	98.3	98.4	101.7	94.5	99.0
1999	98.5	1.7	97.9	97.6	102.4	99.3	100.1	98.8	97.1	98.6	100.0	96.9	101.1	97.9	99.4
2000	100.0	1.5	100.0	100.0	100.0	100.0	100.0	100.0	100.0	100.0	100.0	100.0	100.0	100.0	100.0
2001	100.8	0.8	100.6	103.8	97.6	100.3	99.8	101.2	102.3	99.9	100.0	100.6	98.9	101.4	100.5
2002	101.8	1.0	100.6	107.4	95.7	100.1	99.3	102.8	106.9	99.3	100.9	99.5	97.8	102.2	102.8
2003 (Jan-Jun)	102.2	0.6	101.3	107.5	93.6	100.0	98.5	104.2	107.8	100.1	101.9	98.0	98.0	103.1	103.8

Source: Monthly Statistics Bulletin, July 2003

# PRODUCTION

---



**SARAWAK : MAJOR AGRICULTURE PRODUCTION ('000 TONNES)**

COMMODITY	1995	1996	1997	1998	1999	2000	2001	2002 (p)	2003 (Jan-May)
Crude Palm Oil	222.4	275.3	332.0	308.8	461.7	520.3	610.2	737.8	296.3
* Dry Cocoa Beans	6.4	5.2	4.1	4.5	3.6	3.2	1.5	2.5	1.6
* Rubber	14.4	12.2	6.5	4.7	2.7	1.8	2.7	5.2	3.4
* Pepper (White & Black)	15.5	20.4	26.3	18.9	22.1	24.0	25.9	23.2	5.9
Copra	11.9	10.6	10.7	7.9	9.1	8.7	6.6	7.6	0.6

*Source: Yearbook of Statistics Sarawak, various issues  
Monthly Statistical Bulletin of Sarawak, July 2003*

*Note: \* Refer to export figures (tonne)*

**SARAWAK : LANDING OF MARINE FISH BY GEAR GROUP (Tonnes)**

GEAR GROUP	1996		1997		1998		1999		2000		2001		2002		2003 (Jan-May)
	Tonne	Growth (%)	Tonne	Growth (%)	Tonne	Growth (%)	Tonne	Growth (%)	Tonne	Growth (%)	Tonne	Growth (%)	Tonne	Growth (%)	Tonne
Trawl Nets	48,775	-21.3	50,730	4.0	63,029	24.2	73,866	17.2	93,297	26.3	114,187	22.4	104,085	-8.8	52,893
Drift/Gill Nets	25,681	-5.0	19,692	-23.3	19,455	-1.2	33,091	70.1	26,074	-21.2	26,579	1.9	21,797	-18.0	9,446
Bags Nets	4,611	21.0	4,082	-11.5	3,680	-9.8	4,246	15.4	5,703	34.3	4,113	-27.9	4,378	6.4	2,003
Push/Scoop Lift Nets	12,974	415.9	40,483	212.0	8,735	-78.4	492	-94.4	144	-70.7	288	100.0	1,203	317.7	220
Hooks and Lines	1,888	31.6	2,796	48.1	3,887	39.0	4,413	13.5	3,022	-31.5	3,964	31.2	3,174	-19.9	1,091
Others	6,815	175.8	10,410	52.8	4,427	-57.5	5,806	31.1	6,692	15.3	7,594	13.5	13,585	78.9	14,461
<b>TOTAL</b>	<b>100,744</b>	<b>1.5</b>	<b>128,193</b>	<b>27.2</b>	<b>103,213</b>	<b>-19.5</b>	<b>121,914</b>	<b>18.1</b>	<b>134,932</b>	<b>10.7</b>	<b>156,725</b>	<b>16.2</b>	<b>148,222</b>	<b>-5.4</b>	<b>80,114</b>

Source: Monthly Statistical Bulletin, July 2003

### SARAWAK : AQUACULTURE PRODUCTION

Commodity	1996		1997		1998		1999		2000		2001		2002	
	Tonne	Growth	Tonne	Growth	Tonne	Growth	Tonne	Growth	Tonne	Growth	Tonne	Growth	Tonne	Growth
Fish	47	11.9	101	114.89	123	21.78	557	352.85	661	18.67	630	-5	1,000	58.7
Prawn	355	136.67	392	10.42	551	40.56	1,119	103.09	2,900	159.15	4,183	44	6,500	55.4
	<b>402</b>	<b>109.38</b>	<b>493</b>	<b>22.64</b>	<b>674</b>	<b>36.71</b>	<b>1,676</b>	<b>14,866.00</b>	<b>3,561</b>	<b>112.47</b>	<b>4,813</b>	<b>35.2</b>	<b>7,500</b>	<b>55.8</b>

Source: Department of Marine Fisheries Sarawak

**SARAWAK : PRODUCTION OF SAW LOGS AND SAWN TIMBER**

YEAR	SAWLOGS ( <b>'000 cu. Metres</b> )	SAWN TIMBER ( <b>'000 cu. Metres</b> )
1985	12,285.30	362.98
1990	18,837.80	748.97
1991	19,410.90	904.99
1992	18,848.20	1,138.35
1993	16,735.00	1,442.00
1994	16,317.70	1,722.20
1995	16,091.90	1,874.50

YEAR	SAWLOGS ( <b>'000 cu. Metres</b> )	SAWN TIMBER ( <b>'000 cu. Metres</b> )
1996	16,082.70	1,598.90
1997	16,823.00	1,657.20
1998	11,306.60	1,304.7
1999	13,095.80	1,190.80
2000	14,274.00	1,484.60
2001	12,179.00	1,140.00
2002	11,855.00	1,088.00
2003 (Jan- May)	3,942.00	380.00

Source: *Yearbook of Statistics Sarawak*  
*Monthly Statistical Bulletin Sarawak, July 2003*

## SARAWAK: PRODUCTION OF MINERALS

MINERALS	1996	1997	1998	1999	2000	2001	2002 (p)	2003 (Jan-May)
Crude Petroleum* ('000 tonnes)	9,571.0	8,803.0	8,339.0	8,509.0	8,607.0	8,070.0	8,568.0	3,991.0
LNG* ('000 tonnes)	12,908.0	15,068.0	14,627.0	15,042.0	15,430.0	15,423.0	15,025.6	7,008.0
Silica Sands ('000 tonnes)	268.8	203.0	162.3	274.8	243.8	201.2	206.0	136.7
Coal ('000 tonnes)	75.1	103.5	302.3	308.5	383.1	499.7	352.5	62.4

\* refer to export

Source : Monthly Statistical Bulletin, July 2003

**SARAWAK : GROSS VALUE OUTPUT BY MAJOR MANUFACTURING INDUSTRY GROUPS (MILLION)**

MAJOR GROUP	1991		1992		1993		1994		1995		1996		1997		1999		2000 (p)	
	RM	Share (%)	RM	Share (%)	RM	Share (%)	RM	Share (%)	RM	Share (%)	RM	Share (%)	RM	Share (%)	RM	Share (%)	RM	Share (%)
Food Manufacturing	365	4.8	478	7.4	550	7.2	759	8.7	944	8.7	1,078	8.1	1,411	8.5	2,078	10.3	1,757	6.5
Beverages Industries	36	0.6	37	0.6	34	0.4	46	0.5	50	0.5	86	0.6	123	0.7	110	0.5	123	0.5
Mfg of Wood, Wood & Cork Products, except Furniture	736	11.6	1,197	18.6	2,220	29.0	2,903	33.2	3,101	28.6	3,725	28.0	4,056	24.5	4,166	20.7	4,541	16.7
Manufacture of Industrial Chemicals	3,416	54.0	3,019	46.8	2,973	38.8	2,846	32.5	4,181	38.5	5,165	38.8	6,640	40.1	9,798	48.8	15,438	56.9
Mfg of Other Chemical Products & Crude Oil Refineries	941	14.9	778	12.1	723	9.4	908	10.4	1,015	9.4	1,238	9.3	1,508	9.1	1,007	5.0	1,551	5.7
Manufacture of Non-Metallic Mineral Products	221	3.5	246	3.8	304	4.0	352	4.0	402	3.7	501	3.8	655	4.0	424	2.1	564	2.1
Iron & Steel Basic Ind. & Non-Ferrous Metal Basic Ind.	94	1.5	106	1.6	118	1.5	136	1.6	167	1.5	225	1.7	283	1.7	255	1.3	377	1.4
Miscellaneous Products of Petroleum & Coal	100	1.6	130	2.0	149	1.9	155	1.8	146	1.3	146	1.1	171	1.0	143	0.7	145	0.5
Manufacture of Transport Equipment	78	1.2	95	1.5	108	1.4	144	1.6	161	1.5	98	0.7	230	1.4	180	0.9	138	0.5
Manufacture of Fabricated Metal Products, except Machinery & Equipment	137	2.2	153	2.4	172	2.2	176	2.0	220	2.0	298	2.2	354	2.1	307	1.5	410	1.5

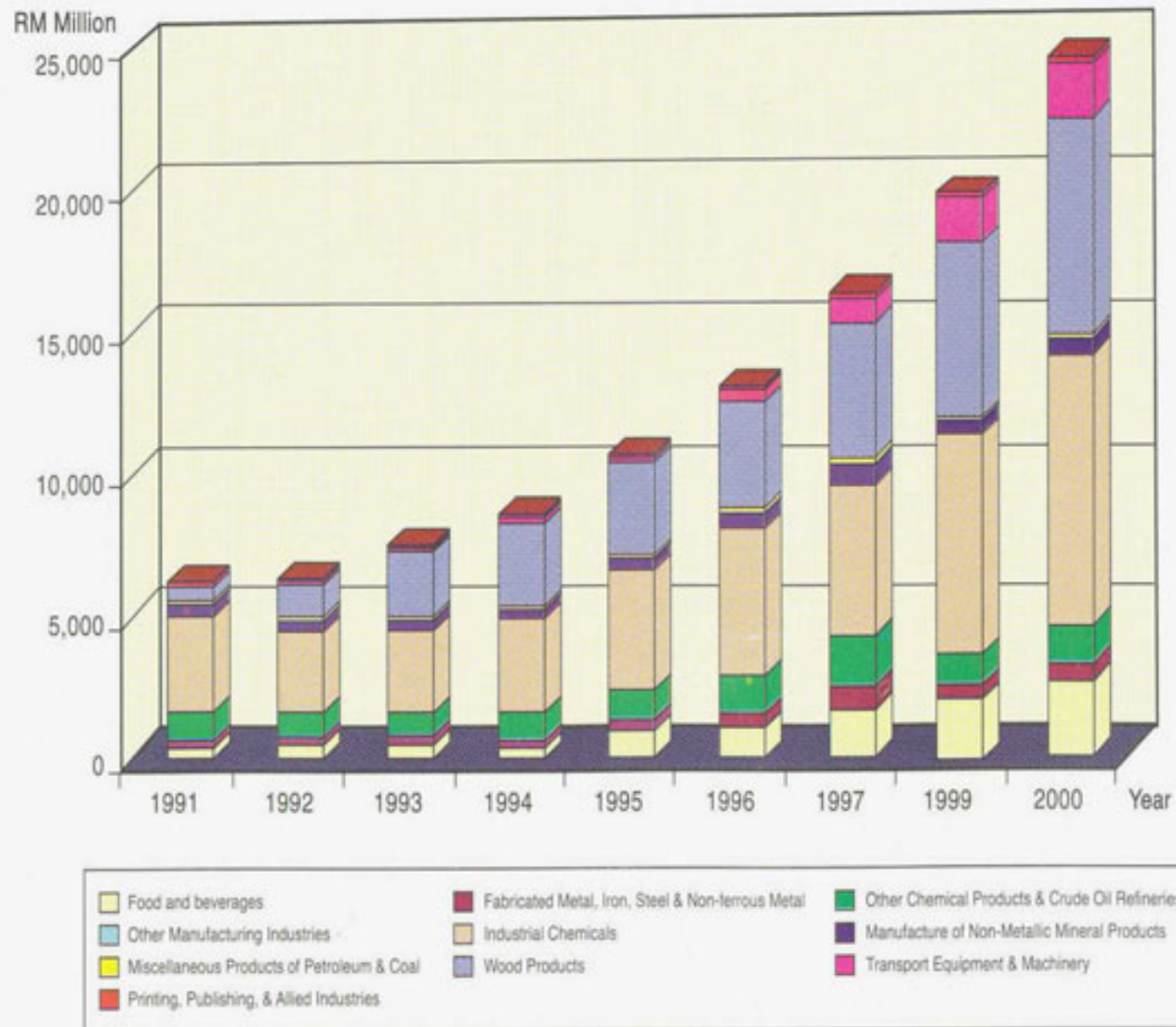
Source: Yearbook of Statistics Sarawak, 2002

**SARAWAK : GROSS VALUE OUTPUT BY MAJOR MANUFACTURING INDUSTRY GROUPS (MILLION) (cont.)**

MAJOR GROUP	1991		1992		1993		1994		1995		1996		1997		1999		2000 (p)	
	RM	Share (%)	RM	Share (%)	RM	Share (%)	RM	Share (%)	RM	Share (%)	RM	Share (%)	RM	Share (%)	RM	Share (%)	RM	Share (%)
Printing, Publishing & Allied Industries	63	1.0	69	1.1	78	1.0	87	1.0	100	0.9	113	0.8	117	0.7	122	0.6	116	0.4
Manufacture of Plastics Products, N.E.C.	26	0.4	25	0.4	32	0.4	34	0.4	64	0.6	52	0.4	74	0.4	66	0.3	122	0.4
Manufacture of Machinery except Electrical & Electric Machinery, Apparatus, Appliances & Supplies	38	0.6	33	0.5	69	0.9	97	1.1	129	1.2	402	3.0	746	4.5	1,222	6.1	1,575	5.8
Manufactured of Paper & Paper Products	20	0.3	24	0.4	26	0.3	34	0.4	41	0.4	40	0.3	51	0.3	49	0.2	66	0.2
Mfg of Furniture & Fixtures, except Primarily of Metal	17	0.3	26	0.4	42	0.5	38	0.4	56	0.5	63	0.5	75	0.5	90	0.4	129	0.5
Manufacture of Rubber Products	20	0.3	19	0.3	16	0.2	17	0.2	25	0.2	22	0.2	16	0.1	15	0.1	18	0.1
Other Manufacturing Industries	14	0.2	15	0.2	51	0.7	22	0.3	49	0.5	58	0.4	60	0.4	53	0.3	57	0.2
<b>Total</b>	<b>6,322</b>	<b>100.0</b>	<b>6,450</b>	<b>100.0</b>	<b>7,665</b>	<b>100.0</b>	<b>8,754</b>	<b>100.0</b>	<b>10,851</b>	<b>100.0</b>	<b>13,310</b>	<b>100.0</b>	<b>16,570</b>	<b>100.0</b>	<b>20,085</b>	<b>100.0</b>	<b>27,127</b>	<b>100.0</b>

Source: Yearbook of Statistics Sarawak, 2002

## SARAWAK: GROSS VALUE OUTPUT BY MAJOR MANUFACTURING INDUSTRY GROUPS





# EXTERNAL TRADE

---

### SARAWAK: EXPORTS, IMPORTS AND BALANCE OF TRADE

YEAR	Exports (RM Million)	Growth (%)	Imports (RM Million)	Growth (%)	Balance of Trade (RM Million)	Growth (%)
1990	11,283.5		6,531.6		4,751.9	
1991	13,026.0	15.4	8,393.0	28.5	4,633.0	-2.5
1992	12,497.1	-4.1	7,669.4	-8.6	4,827.7	4.2
1993	12,610.0	0.9	10,014.6	30.6	2,595.4	-46.2
1994	13,470.3	6.8	10,336.0	3.2	3,134.3	20.8
1995	15,659.2	16.2	10,971.2	6.1	4,688.0	49.6
1996	18,429.9	17.7	10,663.4	-2.8	7,766.5	65.7
1997	21,089.9	14.4	11,800.5	10.7	9,289.4	19.6
1998	20,100.8	-4.7	8,910.1	-24.5	11,190.7	20.5
1999	23,235.0	15.6	11,817.9	32.6	11,417.1	2.0
2000	31,152.0	34.1	13,887.4	17.5	17,264.6	51.2
2001	28,362.1	-9.0	14,993.1	8.0	13,369.0	-22.6
2002 (p)	27,463.5	-3.2	15,413.3	2.8	12,050.2	-9.9
2003 (Jan-May)	13,892.0	41.6	6,499.5	19.5	7,392.5	69.2

Source: *Yearbook of Statistics, various issues*  
*Monthly Statistical Bulletin, July 2003*

note : (p) preliminary

**SARAWAK : EXPORT BY COMMODITY SECTION**

COMMODITY SECTION	EXPORTS							
	2000		2001		2002 (p)		2003 (Jan-May)	
	RM Mil.	Share %	RM Mil.	Share %	RM Mil.	Share %	RM Mil.	Share %
Food	667.8	2.1	502.4	1.8	475.2	1.7	219.3	1.6
Beverages and Tobacco	48.3	0.2	49.0	0.2	51.8	0.2	19.3	0.1
Crude Materials, Inedible	3,475.7	11.2	2,509.5	8.8	2,671.8	9.7	19.3	8.2
Mineral Fuels, Lubricants, etc.	20,121.4	64.6	18,767.4	66.2	17,042.8	62.1	9,255.7	66.6
Animal & Vegetable Oils & Fats	583.7	1.9	613.5	2.2	1,036.2	3.8	548.3	3.9
Chemicals	380.7	1.2	405.4	1.4	395.4	1.4	209.5	1.5
Manufactured Goods	3,756.1	12.1	3,594.0	12.7	3,681.9	13.4	1,526.3	11.0
Machinery & Trans. Equipment	1,910.6	6.1	1,710.5	6.0	1,873.3	6.8	900.5	6.5
Misc. Manufactured Articles	189.4	0.6	168.7	0.6	181.0	0.7	61.6	0.4
Misc. Transactions & Commodities	18.3	0.1	41.7	0.1	54.1	0.2	13.9	0.1
<b>Total</b>	<b>31,152.0</b>	<b>100.0</b>	<b>28,362.1</b>	<b>100.0</b>	<b>27,463.5</b>	<b>100.0</b>	<b>13,892.0</b>	<b>100.0</b>

Source: Monthly Statistical Bulletin, July 2003

note: (p) preliminary

**SARAWAK : MAJOR EXPORTS ITEMS BY VALUE (RM Million)**

EXPORT ITEMS	1990		1996		1997		1998		1999		2000		2001 (p)		2002 (p)		2003 (Jan-May)		
	RM Mil.	Share %	RM Mil.	Share %	RM Mil.	Share %	RM Mil.	Share %	RM Mil.	Share %	RM Mil.	Share %	RM Mil.	Share %	RM Mil.	Share %	RM Mil.	Share %	
<b>PRIMARY AGRICULTURE PRODUCTS</b>																			
Palm Oil* (crude and processed)	67.9	0.6	358.4	1.9	471.4	2.2	734.1	3.7	670.0	2.9	522.2	1.7	560.8	2.0	937.5	3.4	501.2	3.6	
Rubber	31.9	0.3	40.5	0.2	17.9	0.1	11.0	0.1	5.3	0.0	3.8	0.0	5.1	0.0	14.1	0.1	11.0	0.1	
Sago Flour & Starch	1.6	0.0	33.1	0.2	30.5	0.1	42.2	0.2	36.5	0.2	29.8	0.1	30.7	0.1	32.2	0.1	13.2	0.1	
Black Pepper	103.7	0.9	77.0	0.4	204.9	1.0	244.7	1.2	266.2	1.1	328.6	1.1	153.8	0.5	117.0	0.4	31.9	0.2	
White Pepper	13.4	0.1	52.1	0.3	99.4	0.5	120.8	0.6	142.0	0.6	37.2	0.1	24.2	0.1	21.5	0.1	9.4	0.1	
Cocoa Beans	54.2	0.5	15.0	0.1	12.7	0.1	22.7	0.1	12.3	0.1	7.4	0.0	4.3	0.0	11.5	0.0	10.1	0.1	
Others	7.9	0.1	49.6	0.3	-	-	-	-	-	-	-	-	-	-	-	-	-	-	
<b>FORESTRY PRODUCTS</b>																			
Sawlogs	2,882.9	25.5	2,295.7	12.5	2,305.7	10.9	1,739.6	8.7	2,336.2	10.1	2,335.8	7.5	1,507.1	5.3	1,645.6	6.0	694.6	5.0	
Sawn Timber	251.7	2.2	1,116.5	6.1	954.8	4.5	820.8	4.1	766.8	3.3	945.6	3.0	826.6	2.9	817.5	3.0	364.3	2.6	
<b>MINERALS</b>																			
Crude Petroleum	2,949.1	26.1	3,860.1	20.9	3,999.7	19.0	3,627.7	18.0	4,198.5	18.1	7,429.7	23.8	6,265.0	21.1	6,140.1	22.4	3,567.5	25.7	
LNG	2,634.8	23.4	4,745.9	25.8	6,259.5	29.7	5,952.4	29.6	7,002.4	30.1	11,422.5	36.7	11,118.8	39.2	9,931.6	36.2	5,324.6	38.3	
Silica Sands	-	-	9.0	0.0	-	-	-	-	-	-	-	-	-	-	-	-	-	-	
Coal	-	-	8.2	0.0	-	-	-	-	-	-	-	-	-	-	-	-	-	-	
<b>MARINE PRODUCTS</b>																			
Prawns, Fresh, Frozen	12.5	0.1	19.7	0.1	43.7	0.2	56.7	0.3	82.2	0.4	150.2	0.5	147.9	0.5	135.9	0.5	65.0	0.5	
<b>TOTAL</b>	<b>9,011.6</b>	<b>79.9</b>	<b>12,680.8</b>	<b>68.8</b>	<b>14,400.2</b>	<b>68.3</b>	<b>13,372.7</b>	<b>66.5</b>	<b>15,518.4</b>	<b>66.8</b>	<b>23,213.0</b>	<b>74.5</b>	<b>20,643.5</b>	<b>72.8</b>	<b>19,804.5</b>	<b>72.1</b>	<b>10,592.8</b>	<b>76.3</b>	

Note: \* Include Palm Kernel

Source: Yearbook of Statistics Sarawak, 2002  
Monthly Statistical Bulletin Sarawak, July 2003

note: (p) preliminary

**SARAWAK : MAJOR EXPORTS ITEMS BY VALUE (RM Million) - (cont.)**

EXPORT ITEMS	1990		1996		1997		1998		1999		2000		2001 (p)		2002 (p)		2003 (Jan-May)	
	RM Mil.	Share %	RM Mil.	Share %	RM Mil.	Share %	RM Mil.	Share %	RM Mil.	Share %	RM Mil.	Share %	RM Mil.	Share %	RM Mil.	Share %	RM Mil.	Share %
<b>SELECTED MANUFACTURED PRODUCTS</b>																		
<b>(i) Timber Manufactured Products</b>																		
Plywood and Veneer	141.5	1.3	2,495.0	13.5	2,111.4	10.0	2,393.6	11.9	3,053.4	13.1	2,887.9	9.3	2,613.9	9.2	2,818.4	10.3	1,158.8	8.3
Wooden Moulding	28.7	0.3	17.3	0.1	23.2	0.1	34.8	0.2	46.3	0.2	40.8	0.1	42.6	0.2	39.2	0.1	17.0	0.1
Wooden Dowels	33.4	0.3	18.4	0.1	21.0	0.1	30.7	0.2	30.5	0.1	28.2	0.1	29.6	0.1	33.7	0.1	10.4	0.1
<b>(ii) Other Manufactured Products</b>																		
Glazed Floor, Hearth & Wall Tiles	-	-	113.2	0.6	135.5	0.6	105.0	0.5	118.7	0.5	145.3	0.5	143.0	0.5	124.7	0.5	52.8	0.4
Urea & Ammonia (RM '000)	163.2	1.4	325.4	1.8	201.5	1.0	270.1	1.3	218.0	0.9	233.4	0.7	225.5	0.8	232.3	0.8	125.0	0.9
Petroleum Products	671.5	6.0	948.4	5.1	1,094.0	5.2	751.7	3.7	637.1	2.7	972.8	3.1	999.0	3.5	555.0	2.0	174.8	1.3
<b>TOTAL</b>	<b>1,038.4</b>	<b>9.2</b>	<b>3,917.7</b>	<b>21.3</b>	<b>3,586.6</b>	<b>17.0</b>	<b>3,585.9</b>	<b>17.8</b>	<b>4,104.0</b>	<b>17.7</b>	<b>4,308.4</b>	<b>13.8</b>	<b>4,053.6</b>	<b>14.3</b>	<b>3,803.3</b>	<b>13.8</b>	<b>1,538.8</b>	<b>11.1</b>
OTHER EXPORT PRODUCTS	1,233.6	10.9	1,831.3	9.9	3,102.9	14.7	3,142.3	15.6	3,612.6	15.5	3,630.6	11.7	3,665.0	12.9	3,855.7	14.0	1,760.4	12.7
<b>GRAND TOTAL</b>	<b>11,283.5</b>	<b>100.10</b>	<b>18,429.9</b>	<b>100.0</b>	<b>21,089.7</b>	<b>100.0</b>	<b>20,100.9</b>	<b>100.0</b>	<b>23,235.0</b>	<b>100.0</b>	<b>31,152.0</b>	<b>100.0</b>	<b>28,362.1</b>	<b>100.0</b>	<b>27,463.5</b>	<b>100.0</b>	<b>13,892.0</b>	<b>100.0</b>

Note: \* Include Palm Kernel

Source: Yearbook of Statistics Sarawak, 2002

Monthly Statistical Bulletin Sarawak, July 2003

note: (p) preliminary

**SARAWAK : EXPORTS VOLUME OF MAJOR COMMODITIES**

Export Items	1990	1995	2000	2001	2002(p)	2003 (Jan-May)
<b>AGRICULTURE PRODUCTS</b>						
Palm Oil* (Crude & Processed) (tonne)	120,324	265,975	500,641	613,410	694,146	320,195
Rubber (tonne)	14,952	14,372	1,808	2,704	5,247	3,441
Sago Flour (tonne)	3,670	49,975	n.a	n.a	n.a	n.a
Black Pepper (tonne)	26,480	10,517	21,951	23,439	20,847	577
White Pepper (tonne)	2,788	4,733	2,082	2,458	2,378	815
Cocoa Beans ('000 kg)	21,202	6,443	3,176	1,518	2,496	1,612
<b>FORESTRY PRODUCTS</b>						
Sawlogs ('000 cu. Metre)	15,898	7,841	6,142	4,814	4,531	1,925
Sawn Timber ('000 cu. Metre)	359	1,554	1,225	1,132	1,082	465
<b>MINERALS</b>						
Crude Petroleum ('000 tonne)	6,565	8,781	8,607	8,070	8,568	3,991
LNG ('000 tonne)	6,491	9,727	15,430	15,423	15,025	7,008
Silica Sands (tonne)	-	311,018	243,784	201,178	205,950	136,670
Coal (tonne)	-	177,374	383,141	499,734	352,514	62,433
<b>MARINE PRODUCTS</b>						
Prawns, fresh, frozen (tonne)	1,080	708	6,686	6,155	6,646	3,571
<b>SELECTED MANUFACTURED PRODUCTS</b>						
<b>(i) Timber Manufactured Products</b>						
Plywood and veneer (cu. Metre)	185,161	2,073,963	-	-	-	-
<b>(ii) Other Manufactured Products</b>						
Grazed Floor, Hearth & Wall Tiles (tonne)	-	84,611	-	-	-	-
Urea & Ammonia (tonne)	266,743	641,346	514,234	578,712	595,149	257,336
Petroleum Product ('000 tonne)	1,284	1,887	967	1,059	544	134

Note\* Include Palm Kernel, Crude and Processed Pal Oil

(p) preliminary

Source: Malaysia External Trade Summary - December 1991, 1993, 1994 and 1995

Sarawak External Statistics (Table & Summaries), 1996

Monthly Statistical Bulletin Sarawak, July 2003

**SARAWAK : EXPORTS BY COUNTRY OF DESTINATION (RM Million)**

MAJOR COUNTRIES	1995		1996		1997		1998		1999		2000		2001 (p)		2002 (p)		2003 (Jan-May)	
	RM Million	Share (%)	RM Million	Share (%)	RM Million	Share (%)	RM Million	Share (%)	RM Million	Share (%)	RM Million	Share (%)	RM Million	Share (%)	RM Million	Share (%)	RM Million	Share (%)
<b>EUROPE</b> (Western, Central & Eastern)	239.7	1.5	188.1	1.0	374.9	1.8	590.2.9	464.8	2.0	2.0	-	-	-	-	-	-	-	-
<b>SOUTH EAST ASIA</b>																		
Peninsular Malaysia	2,131.2	13.6	1,952.0	10.6	2,062.6	9.8	2,198.9	10.9	2,086.4	9.0	3,993.5	12.8	3,968.3	13.8	4,847.0	13.8	2,612.5	18.8
Sabah	931.4	5.9	884.0	4.8	815.9	3.9	896.6	4.5	1,306.3	5.6	833.5	2.7	785.2	2.7	491.7	2.7	161.9	1.2
Singapore	1,196.7	7.6	1,017.6	5.5	1,115.1	5.3	1,047.5	5.2	844.0	3.6	710.2	2.3	592.9	2.1	379.0	1.4	89.2	0.6
Brunei Darussalam	182.4	1.2	204.8	1.1	198.3	0.9	162.1	0.8	170.1	0.7	298.2	1.0	-	-	-	-	-	-
Thailand	581.4	3.7	727.4	3.9	566.4	2.7	160.0	0.8	206.3	0.9	230.6	0.7	3,215.8	1.1	358.1	1.3	275.2	2.0
Philippines	227.7	1.5	331.4	1.8	238.3	1.1	115.1	1.1	325.3	1.4	461.2	1.5	524.1	1.8	450.0	1.6	319.3	2.3
Indonesia	140.0	0.9	142.4	0.8	100.1	0.5	205.6	1.0	130.0	0.6	719.2	2.3	-	-	-	-	-	-
<b>TOTAL OF SOUTH EAST ASIA</b>	<b>5,390.8</b>	<b>34.4</b>	<b>5,259.4</b>	<b>28.5</b>	<b>5,096.7</b>	<b>24.2</b>	<b>4,885.8</b>	<b>24.3</b>	<b>5,068.4</b>	<b>21.8</b>	<b>7,246.5</b>	<b>23.3</b>	<b>6,186.3</b>	<b>21.8</b>	<b>6,525.8</b>	<b>23.8</b>	<b>3,458.1</b>	<b>24.9</b>
<b>NORTH EAST ASIA</b>																		
China	870.8	5.6	728.0	4.0	787.6	3.7	906.4	4.5	1,061.1	4.6	1,041.1	3.3	674.8	2.4	787.9	2.9	457.8	3.3
Japan	5,307.9	33.9	7,043.4	38.1	7,594.8	36.0	6,963.3	34.6	8,821.0	37.0	12,575.1	40.4	11,782.1	41.5	10,684.3	38.9	5,003.2	36.2
South Korea	1,375.7	8.8	2,112.5	11.5	3,049.4	14.5	2,097.7	10.4	2,650.5	11.4	3,442.5	11.0	2,957.2	10.4	2,709.5	9.9	1,792.8	12.9
Taiwan	913.5	5.8	1,085.4	5.9	1,476.6	7.0	1,421.9	7.1	1,491.2	6.4	2,322.9	7.5	2,049.6	7.2	1,879.0	6.8	954.5	6.9
Hong Kong	276.0	1.8	312.2	1.7	490.3	2.3	630.5	3.1	537.4	2.0	616.4	2.0	-	-	-	-	-	-
<b>TOTAL OF NORTH EAST ASIA</b>	<b>8,743.9</b>	<b>55.8</b>	<b>11,281.5</b>	<b>61.2</b>	<b>13,398.7</b>	<b>63.5</b>	<b>12,019.8</b>	<b>59.8</b>	<b>14,561.2</b>	<b>62.7</b>	<b>19,978.0</b>	<b>64.1</b>	<b>17,463.7</b>	<b>61.6</b>	<b>16,060.7</b>	<b>58.5</b>	<b>8,208.3</b>	<b>59.1</b>

Source: External Trade Summary December, 1996

Monthly Statistical Bulletin, July 2003

note: (p) preliminary

**SARAWAK : EXPORTS BY COUNTRY OF DESTINATION (RM Million) - (cont.)**

MAJOR COUNTRIES	1995		1996		1997		1998		1999		2000		2001 (p)		2002 (p)		2003 (Jan-May)	
	RM Million	Share (%)	RM Million	Share (%)	RM Million	Share (%)	RM Million	Share (%)	RM Million	Share (%)	RM Million	Share (%)	RM Million	Share (%)	RM Million	Share (%)	RM Million	Share (%)
<b>SOUTH ASIA</b>																		
India	415.4	2.7	557.8	3.0	779.4	3.7	731.3	3.6	1,113.0	4.8	1,232.3	4.0	953.4	3.4	1,148.3	4.2	785.1	5.7
<b>OCEANIA</b>																		
New Zealand	148.1	0.9	227.8	1.2	69.4	0.3	136.6	0.7	191.5	0.8	171.0	0.5	-	-	-	-	-	-
Australia	165.5	1.1	186.0	1.0	198.4	0.9	312.1	1.6	290.8	1.3	400.5	1.3	-	-	-	-	-	-
<b>WEST ASIA</b>	158.3	1.0	123.2	0.7	159.7	0.8	137.0	0.7	138.9	0.6	195.0	0.6	-	-	-	-	-	-
<b>NORTH AMERICA (USA)</b>	260.5	1.7	449.3	2.4	747.8	3.5	868.2	4.3	953.3	4.1	763.1	2.4	790.6	2.8	711.0	2.6	1,273.3	9.2
<b>CENTRAL &amp; SOUTH AMERICA</b>	11.8	0.1	5.1	0.0	9.3	0.0	28.6	0.1	11.4	0.1	25.2	0.1	-	-	-	-	-	-
<b>OTHER COUNTRIES</b>	125.2	0.8	151.7	0.8	255.0	1.2	391.4	2.0	441.7	1.9	682.4	2.2	2,968.1	10.5	3,017.7	11.0	167.2	1.1
<b>GRAND TOTAL</b>	<b>15,659.2</b>	<b>100</b>	<b>18,429.9</b>	<b>100</b>	<b>21,089.9</b>	<b>100</b>	<b>20,100.8</b>	<b>100</b>	<b>23,235.0</b>	<b>100.0</b>	<b>31,152.0</b>	<b>100</b>	<b>28,362.1</b>	<b>100.0</b>	<b>27,463.5</b>	<b>100.0</b>	<b>13,892.0</b>	<b>100.0</b>

Source: External Trade Summary December, 1996

Monthly Statistical Bulletin, July 2003

note: (p) preliminary



**SARAWAK : IMPORT BY COMMODITY SECTION**

COMMODITY SECTION	IMPORTS							
	2000		2001		2002 (p)		2003 (Jan-May)	
	RM Mil.	Share %	RM Mil.	Share %	RM Mil.	Share %	RM Mil.	Share %
Food	1,425.7	10.3	1,415.6	9.4	1,484.2	9.6	670.4	10.3
Beverages and Tobacco	194.0	1.4	179.6	1.2	169.3	1.1	76.2	1.2
Crude Materials, Inedible	155.1	1.1	142.9	1.0	193.8	1.3	74.9	1.2
Mineral Fuels, Lubricants, etc.	1,554.0	11.2	1,650.1	11.0	1,301.8	8.4	614.5	9.5
Animal & Vegetable Oils & Fats	43.0	0.3	48.5	0.3	68.3	0.4	20.4	0.3
Chemicals	1,495.8	10.8	1,438.5	9.6	1,749.6	11.4	850.4	13.1
Manufactured Goods	2,313.8	16.7	2,217.6	14.8	2,705.5	17.6	1,060.5	16.3
Machinery & Trans. Equipment	5,384.4	38.8	6,556.4	43.7	6,250.3	40.6	2,536.5	39.0
Misc. Manufactured Articles	1,187.2	8.5	1,119.2	7.5	1,178.0	7.6	488.6	7.5
Misc. Transactions & Commodities	134.4	1.0	224.7	1.5	312.5	2.0	107.1	1.6
<b>Total</b>	<b>13,887.4</b>	<b>100.0</b>	<b>14,993.1</b>	<b>100.0</b>	<b>15,413.3</b>	<b>100.0</b>	<b>6,499.5</b>	<b>100.0</b>

Source: *Monthly Statistical Bulletin, July 2003*

note: (p) preliminary

**SARAWAK : IMPORTS BY COUNTRY OF DESTINATION (RM Million)**

MAJOR COUNTRIES	1995		1996		1997		1998		1999		2000		2001 (p)		2002 (p)		2003 (Jan-May)	
	RM (Million)	Share (%)	RM (Million)	Share (%)	RM (Million)	Share (%)	RM (Million)	Share (%)	RM (Million)	Share (%)	RM (Million)	Share (%)	RM (Million)	Share (%)	RM (Million)	Share (%)	RM (Million)	Share
<b>EUROPE</b>																		
United Kingdom	169.3	1.5	124.3	1.2	130.1	1.1	11.3	1.2	99.9	0.8	96.5	0.7	142.4	0.9	95.6	0.6	34.7	0.5
Fed. Rep. Of Germany	471.5	4.3	254.5	2.4	274.0	2.3	136.4	1.5	327.0	2.8	408.3	2.9	285.2	1.9	204.0	1.3	123.6	1.9
Netherlands	75.1	0.7	72.8	0.7	39.4	0.3	26.5	0.3	35.2	0.3	40.6	0.3	96.3	0.6	84.4	0.5	26.2	0.4
Italy	145.6	1.3	121.9	1.1	143.6	1.2	57.0	0.6	53.9	0.5	70.2	0.5	722.9	4.8	158.9	1.0	41.1	0.6
<b>TOTAL</b>	<b>861.5</b>	<b>7.9</b>	<b>573.5</b>	<b>5.4</b>	<b>587.1</b>	<b>5.0</b>	<b>331.2</b>	<b>3.7</b>	<b>516.0</b>	<b>4.4</b>	<b>615.6</b>	<b>4.4</b>	<b>1,246.7</b>	<b>8.3</b>	<b>542.9</b>	<b>3.5</b>	<b>225.6</b>	<b>3.5</b>
<b>SOUTH EAST ASIA</b>																		
Peninsular Malaysia	5,154.3	47.0	5,022.3	47.1	6,021.1	51.0	4,385.6	49.2	5,958.1	50.4	6,883.8	49.6	7,606.3	50.7	8,627.0	56.0	3,671.5	56.5
Sabah	85.8	0.8	121.6	1.1	89.7	0.8	75.6	0.9	72.2	0.6	71.2	0.5	-	-	-	-	-	-
Singapore	418.3	3.8	457.8	4.3	507.3	4.3	453.0	5.1	459.6	3.9	930.3	6.7	986.0	6.6	698.6	4.5	318.5	4.9
Brunei Darussalam	0.4	0.0	1.2	0.0	5.8	0.0	1.2	0.0	0.3	0.0	1.6	0.0	-	-	-	-	-	-
Thailand	106.7	1.0	185.0	1.7	140.2	1.2	206.1	2.3	106.0	0.9	137.6	1.0	134.7	0.9	192.8	1.3	84.3	1.3
Philippines	4.4	0.0	10.4	0.1	37.6	0.3	34.1	0.4	33.6	0.3	13.3	0.2	-	-	-	-	-	-
Indonesia	149.3	1.4	110.5	1.0	148.2	1.3	157.1	1.8	208.7	1.8	263.1	1.9	238.9	1.6	273.4	1.8	126.1	1.9
<b>TOTAL OF SOUTH EAST ASIA</b>	<b>5,919.2</b>	<b>54.0</b>	<b>5,908.8</b>	<b>55.4</b>	<b>6,949.9</b>	<b>58.9</b>	<b>5,312.7</b>	<b>59.6</b>	<b>6,838.5</b>	<b>57.9</b>	<b>8,300.9</b>	<b>59.6</b>	<b>8,966.2</b>	<b>59.8</b>	<b>9,791.8</b>	<b>63.5</b>	<b>4,200.4</b>	<b>64.6</b>

Source: External Trade Summary December, 1996

Monthly Statistical Bulletin, July 2003

**SARAWAK : IMPORTS BY COUNTRY OF DESTINATION (RM Million) - (cont.)**

MAJOR COUNTRIES	1995		1996		1997		1998		1999		2000		2001 (p)		2002 (p)		2003 (Jan-May)	
	RM (Million)	Share (%)	RM (Million)	Share (%)	RM (Million)	Share (%)	RM (Million)	Share (%)	RM (Million)	Share (%)	RM (Million)	Share (%)	RM (Million)	Share (%)	RM (Million)	Share (%)	RM (Million)	Share (%)
<b>NORTH EAST ASIA</b>																		
China	191.8	1.7	338.6	3.2	310.2	2.6	252.6	2.8	360.4	3.0	405.2	2.9	353.0	2.4	553.2	3.6	416.3	6.4
Japan	1,458.7	13.3	1,490.6	14.0	1,500.7	12.7	1,052.8	11.8	1,241.4	10.5	1,707.6	12.3	1,588.8	10.6	2,008.1	13.0	664.1	10.2
South Korea	280.3	2.6	249.4	2.3	312.5	2.6	264.0	3.0	198.3	1.7	253.4	1.8	194.0	1.3	100.3	0.7	56.0	0.9
Taiwan	198.1	1.8	208.2	2.0	279.7	2.4	112.8	1.3	132.4	1.1	205.5	1.5	163.6	1.1	200.1	1.3	104.5	1.6
Hong Kong	22.3	0.2	34.2	0.3	30.9	0.3	26.0	0.3	20.0	0.2	25.0	0.2	-	-	-	-	-	-
<b>TOTAL</b>	<b>2,151.2</b>	<b>19.6</b>	<b>2,321.0</b>	<b>21.8</b>	<b>2,434.0</b>	<b>20.6</b>	<b>1,708.2</b>	<b>19.2</b>	<b>1,952.5</b>	<b>16.5</b>	<b>2,596.7</b>	<b>18.7</b>	<b>2,298.6</b>	<b>15.3</b>	<b>2,861.8</b>	<b>18.6</b>	<b>1,240.9</b>	<b>19.1</b>
<b>OCEANIA</b>																		
New Zealand	41.0	0.4	49.9	0.5	47.3	0.4	29.3	0.3	50.0	0.4	54.9	0.4	-	-	-	-	-	-
<b>NORTH AMERICA</b>																		
USA	1,396.9	12.7	1,031.3	9.7	886.7	7.5	815.6	9.2	1,702.4	14.4	1,664.9	12.0	1,594.3	10.6	1,355.7	8.8	419.6	6.5
<b>OTHER COUNTRIES</b>																		
	601.7	5.5	779.0	7.3	895.5	7.6	713.2	8.0	758.5	6.4	654.4	4.7	887.3	5.9	861.1	5.6	413.0	6.4
<b>GRAND TOTAL</b>	<b>10,971.5</b>	<b>100</b>	<b>10,663.5</b>	<b>100</b>	<b>11,800.5</b>	<b>100</b>	<b>8,910.2</b>	<b>100</b>	<b>11,817.9</b>	<b>100</b>	<b>13,887.4</b>	<b>100</b>	<b>14,993.1</b>	<b>100</b>	<b>15,413.3</b>	<b>100</b>	<b>6,499.5</b>	<b>100</b>

Source: External Trade Summary December, 1996  
Monthly Statistical Bulletin, July 2003

# **SOCIAL** **INDICATORS**

---

## SARAWAK AND MALAYSIA: PERCENTAGE OF POPULATION WITH WATER SUPPLY (%)

STATE		1980	1990	1995	1998	2000
SARAWAK	RURAL	20.0	47.3	80.0	82.0	94.0
	URBAN	87.0	98.0	93.0	93.0	100.0
	<b>TOTAL</b>	<b>31.8</b>	<b>61.2</b>	<b>85.0</b>	<b>86.0</b>	<b>94.0</b>
MALAYSIA	RURAL	43.2	66.1	82.0	83.0	84.0
	URBAN	89.0	96.0	96.0	96.0	99.0
	<b>TOTAL</b>	<b>59.0</b>	<b>78.3</b>	<b>89.0</b>	<b>90.0</b>	<b>92.0</b>

Source: *Seventh Malaysia Plan (7MP), Seventh Malaysia Plan (Mid-term Review),  
All District Offices in Sarawak, 2001*

Note: The estimated percentage of population with treated and piped water supply in Sarawak for the year 2000 is 65.0%

## SARAWAK: COMSUMPTION & PRODUCTION OF WATER

	Production ('000 Cu. Metres)	Consumption ('000 Cu. Metres)
1990	98,058	73,975
1995	158,215	111,393
2000	219,338	153,893
2001	228,035	163,991
2002	236,533	183,954

Source: *Monthly Statistical Bulletin Sarawak, July 2003*

## SARAWAK AND MALAYSIA: PERCENTAGE OF POPULATION WITH ELECTRICITY SUPPLY (%)

STATE		1980	1990	1995	1998	2000
SARAWAK	RURAL	30.0	38.0	46.0	64.0	80.0
	URBAN	95.0	98.0	99.0	100.0	100.0
	<b>TOTAL</b>	<b>34.0</b>	<b>49.0</b>	<b>64.0</b>	<b>76.0</b>	<b>89.0</b>
MALAYSIA	RURAL	48.0	71.0	85.0	90.0	93.0
	URBAN	97.0	99.0	100.0	100.0	100.0
	<b>TOTAL</b>	<b>65.0</b>	<b>80.0</b>	<b>89.0</b>	<b>92.0</b>	<b>97.0</b>

Source: Ministry of Rural Development, Malaysia

Seventh Malaysia Plan (7MP); Eighth Malaysia Plan (8MP)

All District Offices in Sarawak, 2001

## SARAWAK: UNIT GENERATED & COMSUMPTION OF ELECTRICITY

	Unit Generated (million KWh)	Consumption (million Kwh)
1990	1,398.4	1,234.4
1995	2,502.0	2,252.7
2000	4,018.3	3,587.3
2001	4,205.8	3,750.6
2002	4,430.6	3,875.9

Source: Monthly Statistical Bulletin Sarawak, July 2003

## SARAWAK AND MALAYSIA: SUMMARY OF OTHER COMPARATIVE SOCIAL AND QUALITY OF LIFE INDICATORS

INDICATORS	1995		1996		1997		1998		1999		2000		2001	
	M'SIA	S'WAK	M'SIA	S'WAK	M'SIA	S'WAK	M'SIA	S'WAK	M'SIA	S'WAK	M'SIA	S'WAK	M'SIA	S'WAK
Primary School Enrolment Ratio	96	88	99	89	96	90	97	90	na	92.2e	na	na	na	na
Pupil-Teacher: Primary	20	17	20	17	19	17	19	17	18	18	19	17	18	17
Pupil-Teacher: Secondary	19	19	19	19	19	19	19	19	18	19	18	18	17	18
Population Per Doctor	2,153	3,491	2,076	3,949	1,521	3,648	1,477	3,049	1,465	2,681	1,489	2,719	na	na
Crude Birth Rate (per 1,000 population)	26.1	25.3	25.7	25.0	24.8	24.9	25.0	22.9	24.4	22.5	24.5 (p)	22.5 (p)	22.3 (p)	21.9 (p)
Crude Death Rate (per 1,000 population)	4.6	4.0	4.5	4.1	4.6	4.1	4.4	4.0	4.4	3.9	4.4 (p)	4.1 (p)	4.4 (p)	4.1 (p)
Infant Mortality Rate (per 1,000 live births)	10.3	7.5	9.0	5.8	9.4	6.0	8.1	6.2	7.9	5.4	7.9 (p)	4.8 (p)	6.3 (p)	4.2 (p)
Telephone Subscribers	3,332,447	189,988	3,710,871	206,490	4,154,193	250,656	4,323,705	267,597	4,370,356	265,314	4,573,902	275,188	4,710,000	279,776
Motor Vehicles Registered	6,897,434	490,872	7,686,684	532,689	8,550,469	579,213	9,141,357	604,471	9,929,951	636,997	10,598,804	674,681		717,245
Number of Landings And Takeoffs	406,338	135,178	441,596	138,991	425,825	137,317	389,470	115,270	365,852	110,942	362,004	119,203		130,865

Source: Yearbook of Statistics, Malaysia 2001

Yearbook of Statistics, Sarawak 2002

Monthly Statistical Bulletin Malaysia, December 2001

State Health Department, Sarawak (Mar, 2002)

note: (p) preliminary; (e) estimate

\* as at 31 December 2002

### SARAWAK: EDUCATION AND TRAINING

	1960	1970	1980	1990	1991	1993	1996	1997	1998	1999	2000	2001
<b>TOTAL NUMBER OF STUDENTS</b>	<b>95,403</b>	<b>144,007</b>	<b>298,767</b>	<b>-</b>	<b>360,509</b>	<b>378,138</b>	<b>415,692</b>	<b>429,162</b>	<b>436,752</b>	<b>452,143</b>	<b>459,903</b>	<b>467,211</b>
Primary School Enrolment	94,773	144,007	206,923	227,382	229,855	237,357	260,193	265,746	268,025	275,891	278,271	280,635
Secondary School Enrolment	9,266	35,459	91,214	128,170	128,767	137,972	153,507	160,868	166,754	173,738	177,811	181,699
Vocational School Enrolment	n.a	376	630	n.a	1,887	2,809	1,992	2,548	1,973	2,514*	3,821	4,877
<b>TOTAL NUMBER OF TEACHERS</b>	<b>n.a</b>	<b>n.a</b>	<b>10,081</b>	<b>-</b>	<b>19,937</b>	<b>22,158</b>	<b>23,716</b>	<b>24,661</b>	<b>24,835</b>	<b>25,169</b>	<b>25,675</b>	<b>26,710</b>
No. of Teachers in Primary School	n.a	4,404	6,413	11,466	12,820	14,173	15,130	15,600	15,651	15,662	15,886	16,152
No. of Teachers in Secondary School	n.a	1,424	3,572	6,300	6,885	7,742	8,189	8,680	8,800	9,149	9,938	10,052
No. of Teachers in Vocational School	n.a	19	96	n.a	232	243	397	371	384	358*	406	506

Note : \*refer to Technical Secondary Schools

Source : *Annual Statistical Bulletins Sarawak*  
*Yearbook of Statistics Sarawak, 1997 / 1998 / 2001*  
*State Planning Unit, Sarawak*



## SARAWAK: HEALTH SERVICES

	1990	1995	1996	1997	1998	1999	2000	2001
Hospitals*	17	21	21	21	21	21	21	21
Health Clinic, Rural Clinic, Maternal & Child Health Clinic & Dental Clinic	295	498	497	497	529	524	534	528
No. of Beds	4,073	4,302	4,357	4,417	4,458	4,458	4,602	4,560
Doctors	403	540	486	537	656	756	708	738
Nurses	<b>904</b>	<b>937</b>	<b>1,111</b>	<b>1,141</b>	<b>1,218</b>	<b>1,364</b>	<b>1,585</b>	<b>1,711</b>
Dentists	114	116	119	121	126	139	124	124

Source : *Yearbook of Statistics Sarawak, 2000; State Health Department Sarawak*

note : \* Including Sentosa Hospital & Rajah Charles Brooke Memorial Hospital

\*\* refers to government doctors only

**SARAWAK : VISITOR ARRIVALS BY COUNTRY OF ORIGIN**

Country	1996		2000		2001		2002		2003 (Jan-June)	
	No. of Tourist	Share (%)	No. of Tourist	Share (%)	No. of Tourist	Share (%)	No. of Tourist	Share (%)	No. of Tourist	Share (%)
<b>South East Asia</b>										
Brunei	580,330	18.9	923	27.2	991,189	28.4	1,022,506	27.8	419,841	28.3
Singapore	36,603	1.2	33,234	1.0	32,386	0.9	32,528	0.9	11,508	0.8
Thailand	2,300	0.1	5,092	0.2	9,853	0.3	12,454	0.3	11,275	0.8
Indonesia	185,733	6.1	275,031	8.0	300,366	8.6	319,742	8.7	176,329	11.9
Filipina	15,364	0.5	35,567	1.0	49,928	1.4	60,056	1.6	30,156	2.0
<b>Total</b>	<b>820,330</b>	<b>26.7</b>	<b>1,272,040</b>	<b>37.5</b>	<b>1,382,722</b>	<b>39.6</b>	<b>1,447,286</b>	<b>39.4</b>	<b>649,109</b>	<b>43.7</b>
<b>Other Asian Countries</b>										
Japan	13,877	0.5	11,601	0.3	10,543	0.3	10,956	0.3	3,515	0.2
Taiwan	13,373	0.4	9,878	0.3	10,247	0.3	10,189	0.3	2,764	0.2
Hong Kong	3,070	0.1	1,190	0.0	1,099	0.0	1,493	0.0	373	0.0
China	3,990	0.1	5,414	0.2	7,641	0.2	11,391	0.3	4,491	0.3
India	3,740	0.1	5,622	0.2	8,041	0.2	8,792	0.2	3,459	0.2
<b>Total</b>	<b>38,050</b>	<b>1.2</b>	<b>33,705</b>	<b>1.0</b>	<b>37,571</b>	<b>1.1</b>	<b>42,821</b>	<b>1.2</b>	<b>14,602</b>	<b>1.0</b>
<b>Europe</b>										
United Kingdom & Ireland	29,044	0.9	33,911	1.0	36,271	1.0	37,313	1.0	15,611	1.1
Eastern & Western Europe	12,895	0.4	17,468	0.5	12,764	0.4	16,204	0.4	6,690	0.5
<b>Total</b>	<b>41,949</b>	<b>1.4</b>	<b>51,379</b>	<b>1.5</b>	<b>49,035</b>	<b>1.4</b>	<b>53,517</b>	<b>1.5</b>	<b>22,751</b>	<b>1.5</b>
USA	8,325	0.3	9,322	0.3	8,711	0.2	9,277	0.3	3,525	0.2
Canada	5,861	0.2	5,838	0.2	5,690	0.2	6,691	0.2	2,821	0.2
Australia & New Zealand	5,861	0.2	19,400	0.6	21,185	0.6	22,047	0.6	8,470	0.6
Others	104,597	3.4	151,726	4.5	164,038	4.7	152,776	4.2	77,936	5.2
<b>Total Foreign Visitors</b>	<b>1,033,812</b>	<b>33.7</b>	<b>1,543,410</b>	<b>45.5</b>	<b>1,668,898</b>	<b>47.8</b>	<b>1,734,415</b>	<b>47.2</b>	<b>779,034</b>	<b>52.4</b>
<b>Malaysian</b>	<b>2,033,891</b>	<b>66.3</b>	<b>1,847,226</b>	<b>54.5</b>	<b>1,823,417</b>	<b>52.2</b>	<b>1,939,420</b>	<b>52.8</b>	<b>706,034</b>	<b>47.6</b>
<b>Total</b>	<b>3,067,703</b>	<b>100.0</b>	<b>3,390,536</b>	<b>100.0</b>	<b>3,492,315</b>	<b>100.0</b>	<b>3,676,835</b>	<b>100.0</b>	<b>1,485,737</b>	<b>100.0</b>

Source: Monthly Statistical Bulletin July 2003



**SARAWAK : NUMBER OF NEW VACANCIES REPORTED BY INDUSTRY GROUPS**

INDUSTRY GROUPS	1996		2000		2001		2002		2003 (Jan-June)	
	No. of Vacancies	Share (%)	No. of Vacancies	Share (%)	No. of Vacancies	Share (%)	No. of Vacancies	Share (%)	No. of Vacancies	Share (%)
Agriculture, Forestry, Livestock & Fishing	253	5.0	48,336	69.9	26,799	32.6	41,914	37.9	13,074	44.3
Mining & Quarrying	117	2.3	15	0.0	69	0.1	213	0.2	0	0.0
Manufacturing	1,760	34.9	15,504	22.4	40,961	49.9	51,355	46.4	11,282	38.2
Electricity, Gas & Water	15	0.3	0	0.0	22	0.0	116	0.1	219	0.7
Constructions	948	18.8	1,793	2.6	10,681	13.0	13,612	12.3	3,585	12.1
Wholesale & Retail Trades, Hotels & Restaurants	861	17.1	536	0.8	1,495	1.8	2,118	1.9	817	2.8
Transport, Storage & Communication	189	3.7	180	0.3	1,314	1.6	524	0.5	144	0.5
Finance, Insurance, Real Estate & Business Services	419	8.3	690	1.0	153	0.2	187	0.2	50	0.2
Other Services	482	9.6	2,055	3.0	595	0.7	573	0.5	352	1.2
<b>Total</b>	<b>5,044</b>	<b>100</b>	<b>69,109</b>	<b>100</b>	<b>82,089</b>	<b>100</b>	<b>110,612</b>	<b>100</b>	<b>29,523</b>	<b>100</b>

Source: Monthly Statistical Bulletin, July 2003

# SARAWAK

- ❖ **VISION;**
- ❖ **GOAL;**
- ❖ **DEVELOPMENT THRUSTS;**
- ❖ **BROAD DEVELOPMENT OBJECTIVES;**
- ❖ **BROAD DEVELOPMENT STRATEGIES; AND**
- ❖ **OPPORTUNITIES**

## VISION

- To be fully developed and industrialized State by year 2020 with every one having a share in an expanding economy
  - The goal is to create a more progressive, prosperous, cultured and united Sarawak

## STATE DEVELOPMENT GOAL

- To attain a high and sustainable rate of economic growth, a more equitable distribution of wealth and improved quality of life

## STATE DEVELOPMENT THRUSTS

- High economic growth and sustainable development
- Equitable distribution of development benefit and balance regional development
  - Enhancement in quality of life
  - Knowledge society, skilled and technically trained workforce
- Increase and improved equitable income distribution especially to reduce incidence of poverty

## DEVELOPMENT POLICIES

### National Vision Policies: Key Thrusts

- Building a resilient nation
- Promoting an equitable society
- Sustaining high economic growth
- Enhancing competitiveness
- Developing a knowledge-based economy
- Strengthening human resource development
- Pursuing environmentally sustainable development

### State Development Philosophy

- Politics of Development
- The New Reality
  - C = Change
  - O = Opportunity
  - M = Mobility
  - E = Equality

### BROAD DEVELOPMENT OBJECTIVES

To transform Sarawak into a developed State, the development objectives are to attain:

- Rapid economic growth predicated on sustainable and high quality development
- Equitable distribution of economic development and benefit across regions and groups
- Transformation from P (production) to the K-economy and society through human resource development, greater S&T and R&D activities
- Social development and enhancement of quality of life

**BROAD DEVELOPMENT STRATEGIES**

- Economic diversification and promotion of new growth sectors to achieve rapid and sustainable growth
- Increased coverage, efficiency and quality of infrastructure to facilitate equitable distribution of development benefits and more balance regional development
- Improving housing, medical, recreational facilities, social amenities and services to enhance the quality of life of the people
- Effective human resource development programmes to produce K-workers

**SARAWAK: OPPORTUNITIES, STRATEGIES PROGRAMMES FOCUS AND NEWS APPROACHES**

STRATEGIC FOCUS	OPPORTUNITIES	NEW DIRECTIONS
<ul style="list-style-type: none"> <li>• Power and Energy</li> <li>• Infrastructure, Utilities and Communication</li> <li>• Human Resource Development</li> <li>• Information and Communication Technology</li> <li>• Social Development</li> <li>• Services</li> </ul>	<ul style="list-style-type: none"> <li>• Tourism</li> <li>• Urban Development</li> <li>• Land &amp; Rural Development</li> <li>• Forest Industry</li> <li>• Biodiversity &amp; Natural Resources</li> </ul>	<ul style="list-style-type: none"> <li>• Coastal Zone Development</li> <li>• Commercial Agriculture &amp; Food Industries</li> <li>• Manufacturing for Higher Value-Added Products (Clustering, Deepening &amp; Linkages)</li> <li>• Services</li> <li>• Regional Cooperation</li> <li>• Sustainable Environment and Resources Management</li> </ul>



**OPPORTUNITIES IN AGRICULTURE SECTORS****1. FOOD CROP INDUSTRIES**

- Commercial Paddy Production
- Integrated Fishery Development Area
- Deep Sea Fishing and Aquaculture
- Livestock Production
- Processing of Local Food Products for both Export and Domestic Markets

**2. FISHERIES INDUSTRIES**

- Development of modern deep-sea fishing and aquaculture

**OPPORTUNITIES IN THE MANUFACTURING SECTOR****A. RESOURCE BASED INDUSTRIES****1. Oil and Gas****2. Mineral-Based Industries**

- Resources such as silica sand, kaolinitic clay and coal provide vast potential for value-added processing (*i.e. kaolitic clay and ball clay suitable for use in the manufacture of paper and ceramic products*)

**3. Forestry/Wood-Based Industries**

- Downstream processing

**4. Agro-Based Industries**

- Processing of agriculture commodities

**5. Biotechnology**

- Vast reserves of natural resources

**B. NON-RESOURCE BASED INDUSTRIES****1. Capital Intensive hi-tech**

- Samajaya Free Industrial Zone

**2. Shipbuilding**

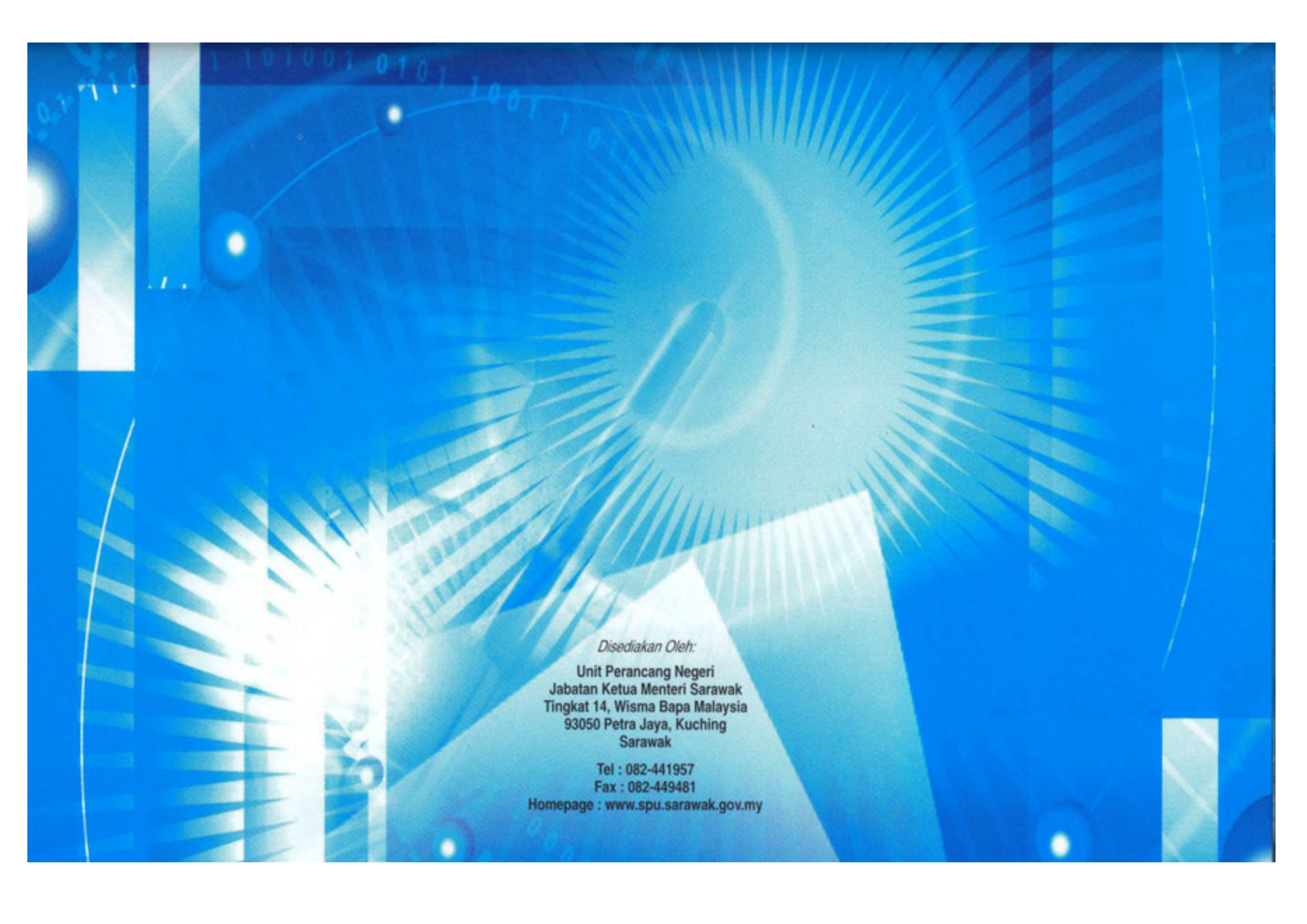
- Several industrial sites in Kuala Baram and Sibul.
- Clients from countries such as Singapore, Indonesia, Vietnam and other Asian countries.

**3. Other Potential Industries**

- Engineering work, metal fabrication, machinery, components and transport.

OPPORTUNITIES IN THE TOURISM SECTOR	OPPORTUNITIES IN THE SERVICES SECTOR
<p><b>PRODUCT DEVELOPMENT</b></p> <ul style="list-style-type: none"> <li>* To be spearheaded by the private sector with the backing of Sarawak Tourism Board and Ministry of Tourism</li>   <li>* <b>Culture-Adventure-Nature (CAN)</b> <ul style="list-style-type: none"> <li>- Diving, Jungle Tracking, National Parks, World Heritage Site, Head Hunters Trail Homestay Programme, Agro-Tourism, Adventure-Related (mountain biking, white water rafting and mountain climbing), Cultural Events (Rainforest World Music Festival, Kaul Festival, Gawai Celebration)</li> </ul> </li>   <li>* <b>Meetings-Incentives-Conventions-Exhibitions (MICE)</b></li>   <li>* <b>Eco-Tourism, Bio-Tourism</b></li>   <li>* <b>Handicraft Development</b></li> </ul>	<ul style="list-style-type: none"> <li><b>1. EDUCATION</b> <ul style="list-style-type: none"> <li>- 32 private institutions in the State with an enrolment of more than 8,000 foreign students (e.g. Swinburne University, Curtin University)</li> </ul> </li>   <li><b>2. MEDICAL SERVICES</b> <ul style="list-style-type: none"> <li>- NORMAH SPECIALIST CENTRE</li> <li>- TIMBERLAND</li> <li>- SIMC</li> </ul> </li> </ul>

## NOTES \_\_\_\_\_



*Disediakan Oleh:*

**Unit Perancang Negeri  
Jabatan Ketua Menteri Sarawak  
Tingkat 14, Wisma Bapa Malaysia  
93050 Petra Jaya, Kuching  
Sarawak**

Tel : 082-441957

Fax : 082-449481

Homepage : [www.spu.sarawak.gov.my](http://www.spu.sarawak.gov.my)