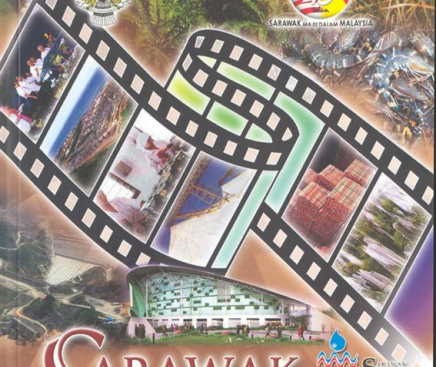




SARAWAK 45 TAHUN DALAM MALAYSIA



SARAWAK

Facts and Figures

2008



STATE PLANNING UNIT CHIEF MINISTER'S DEPARTMENT, SARAWAK.

RUKUNEGARA

DECLARATION

OUR NATION, MALAYSIA, being dedicated :

- To achieving a greater unity of all her peoples ;
- To maintaining a democratic way of life ;
- To creating a just society in which the wealth of the nation shall be equitably shared ;
- To ensuring a liberal approach to her rich and diverse cultural traditions ;
- To building a progressive society which shall be oriented to modern science and technology;

We, her peoples, pledge our united efforts to attain these ends guided by these principles :

Belief in God

Loyalty to King and Country

Upholding the Constitution

Rule of Law

Good Behaviour and Morality

SARAWAK FACTS AND FIGURES

CONTENTS

Page

A. BACKGROUND INFORMATION

State of Sarawak	1
Facts on Sarawak	2
Basic Statistics	3
Exchange Rates	3
The State Government	4
Sarawak : Administrative Divisions and Districts	5
Sarawak : Niche Economic Activities	6
Sarawak : Land Use	7
Sarawak : Natural Resources	8
Key Summary Statistics of Malaysia Population 2000	9
Sarawak : Area, Population, Average Growth Rate & Population Density by District	10
Sarawak : Population by Administrative District 2000 & 2008	11
Sarawak : Population by Ethnic Group and Administrative District, 2000	12 - 13
Sarawak : Population by Age Group	14
Sarawak : Live Births, Deaths & Infant Deaths	15
Malaysia and Sarawak : Percentage Distribution of Employed Persons by Industry	16

B. SARAWAK ECONOMY

Malaysia and Sarawak : Gross Domestic Product	17
Sarawak : Gross Domestic Product	18
Sarawak : External Sector	19
Sarawak : Major Export Items	20
Sarawak : Inflation (2005=100)	21
Sarawak : Capital Investment in Manufacturing Projects	22
Malaysia : Approved Manufacturing Projects (ICA) by State	23

C. AGRICULTURE

Planted Area of Main Crops	24
Sarawak : Major Agriculture Production	25
Sarawak : Number of Livestock	26
Sarawak : Landing of Marine Fish by Gear Group	27
Sarawak : Production of Forest and Forest Products	28

D. EDUCATION, HEALTH AND TOURISM

Sarawak : Education and Training	29
Sarawak : Health Services	30
Sarawak : Visitor Arrivals by Country of Origin	31

E. TRANSPORT

Malaysia and Sarawak : Road by Surface Type	32
Sarawak : Total Motor Vehicles Registered as at End of Year	33
Sarawak : Aircraft Movements at Principal Airports	34
Sarawak : Arrivals and Departures of Vessels by Port	35
Sarawak : Cargo Loaded and Discharged at Principal Ports	36

F. UTILITIES AND OTHER SERVICES

Sarawak : Consumption and Production of Water	37
Sarawak : Unit Generated and Consumption of Electricity	37
Sarawak : Principal Statistics of All Professions (Private Sector)	38
Sarawak : Principal Statistics of Selected Professions	39

	Page
G. FINANCE	
Sarawak : Revenue and Expenditure	40
Sarawak : Import and Export Duties, Sales Tax, Excise and Service Tax	41
H. THE 9th MALAYSIA PLAN MISSIONS & STRATEGIES	
Thrust of the National Mission	42
State Development Strategies	43
I. SARAWAK CORRIDOR OF RENEWABLE ENERGY	
Enabling Environment : Institutions	44
Area : Central Region of Sarawak	45
Key Elements	46
10 Priority Industries	47
5 New Growth Nodes	48

BACKGROUND INFORMATION

STATE OF SARAWAK

Strategically located south of the booming North Asia markets...



- **LOCATION :**
Between latitude $0^{\circ} 50'$ and $5^{\circ} N$ and longitude $109^{\circ} 36'$ and $115^{\circ} 40' E$
- **CLIMATE :**
Hot and Humid equatorial monsoon climate
- **RAINFALL :**
Mean Annual : 3,283mm
- **TEMPERATURE :**
Daily temperature range from $33^{\circ} C$ ($90^{\circ} F$) in the afternoon to $22^{\circ} C$ ($70^{\circ} F$) during the night
- **AREA :**
124,449.5 sq. km

FACTS ON SARAWAK

TOTAL AREA	: 124,449 square kilometres
LOCATION	: Between latitude 0° 50' and 5° N and longitude 109° 36' and 115° 40' E
SYSTEM OF GOVERNMENT	: Parliamentary democracy with a constitutional monarch
CAPITAL OF SARAWAK	: Kuching
MAJOR ETHNIC GROUPS	: Malay, Iban, Chinese, Bidayuh, Melanau, Orang Ulu, Indian, and other indigenous groups
MAJOR LANGUAGES	: Malay (official language), English, Mandarin, Iban, others local dialects
MAJOR RELIGIONS	: Islam (official religion), Buddhism, Christian, and Hindu
TIME	: GMT + 8 hours : US Eastern Standard Time + 13 hours
CLIMATE	: Tropical : warm and sunny throughout the year. Daily temperature range from 33° C (90° F) in the afternoon to 22° C (70° F) during the night.
CURRENCY	: Ringgit Malaysia (RM) which is divided in 100 cent.
EXCHANGE RATE	: Pegged at US\$1 = RM3.80 on 2 September 1998. : Ringgit depeg on 21 July 2005. : US\$1 = RM3.20 for January - August 2008

BASIC STATISTICS

	SARAWAK		MALAYSIA	
	2007	2008 e	2007 p	2008 e
Population (Million)	2.4	2.5	27.2	27.7
Labour Force (Million)	1.0	1.0	11.8	12.0
Employment (Million)	1.0	1.0	11.4	11.6
Unemployment Rate (%)	4.3	4.0	3.3	3.2
GDP Growth Rate at 1987 Constant Prices (%)	5.8	5.0	6.3	5.7
GDP Growth Rate at Current Prices (%)	9.3	6.0	11.9	11.5
Balance of Trade (RM Billion)	41.7	14.1*	100.3	26.8 *
Exports (RM Billion)	67.5	20.0 *	605.2	151.8 *
Imports (RM Billion)	25.8	5.9 *	504.8	125.0 *

Notes : Malaysia GDP growth rate refer to 2000 Constant Prices

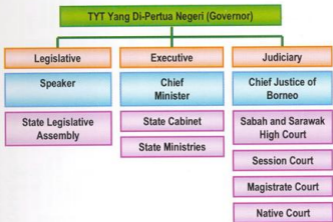
* Figures refer to January - March

(e) estimate (p) preliminary

EXCHANGE RATES

Foreign Currency	2006	2007	2008 (Jan - Aug)
<i>(RM per Unit)</i>			
U.S. Dollar	3.7	3.4	3.2
Euro	4.6	4.7	5.0
Pound Sterling	6.8	6.9	6.4
Canadian Dollar	3.2	3.2	3.2
Australian Dollar	2.8	2.9	3.0
Singapore Dollar	2.3	2.3	2.3

THE STATE GOVERNMENT



STATE MINISTRIES

- Ministry of Planning and Resource Management
- Ministry of Finance
- Ministry of Public Utilities
- Ministry of Rural Development
- Ministry of Land Development
- Ministry of Industrial Development
- Ministry of Modernisation of Agriculture
- Ministry of Housing
- Ministry of Infrastructure Development and Communication
- Ministry of Environment and Public Health
- Ministry of Social Development and Urbanisation
- Ministry of Urban Development and Tourism

ADMINISTRATIVE DIVISIONS AND DISTRICTS

DIVISION	DISTRICTS	SUBDISTRICTS	DIVISION	DISTRICTS	SUBDISTRICTS
KUCHING	Kuching	Padawan	SIBU	Sibu	
	Bau			Kanowit	
	Lundu	Sematan		Selangau	
SAMARAHAN	Samarahan		MUKAH	Mukah	Balingian
	Asajaya			Dalat	Oya
	Serian	Tebudu		Daro	Belawai
	Simunjan	Sebuyau		Matu	Igan
SRI AMAN	Sri Aman	Lingga, Pantu	BINTULU	Bintulu	Sebauh
	Lubok Antu	Engkilil		Tatau	
BETONG	Betong	Maludam, Debak,	KAPIT	Kapit	Ng. Merit
		Spaoh, Pusa		Belaga	Sg. Asap
		Saratok		Kabong, Roban, Budu	Song
SARIKEI	Sarikel		MIRI	Miri	Sibus
	Meradong				Niah-Suai
	Julai			Marudi	Beluru, Long Lama
	Pakan				
			LIMBANG	Limbang	Ng. Medamit
				Lawas	Sundar, Trusan



SARAWAK : NICHE ECONOMIC ACTIVITIES

Spread out Development



KUCHING

- Gateway
- High-Tech Industry
- Finance
- Tourism
- Services



BINTULU

- Petrochemical
- Energy Intensive Industry
- Plantation



MIRI

- Tourism
- Plantation
- Manufacturing
- Commerce



SAMARAHAN

- Education
- Medical
- Agriculture
- Food Granary



MUKAH

- Timber Processing
- Sago Plantation
- Tourism
- Education

LIMBANG

- Agriculture
- Tourism



SRI AMAN

- Agriculture
- Tourism

BINTULU

KAPIT



BETONG

- Agriculture



SARIKEI

- Agriculture
- Fishing



SIBU

- Ship Building
- Tourism



KAPIT

- Logging
- Coal
- Hydro power
- Tourism

SARAWAK : LAND USE

LAND USE CLASSES	Sq. km	(%)
1. Settlement and associated non- agricultural lands	360	0.3
2. Horticultural lands (mainly miscellaneous cultivation and including small areas of fruit trees)	468	0.4
3. Tree, palm and other permanent crops	2,477	2.0
Rubber	1,448	1.2
Oil Palm	309	0.3
Coconut	434	0.4
Pepper	114	0.1
Sago	171	0.1
4. Crop land	37,076	30.1
Wet paddy	559	0.5
Shifting cultivation	36,517	29.6
5. Unused land (secondary growth)	634	0.5
6. Swamp forest	12,622	10.2
Mixed swamp forest	9,714	7.9
Alan	2,334	1.9
Padang Paya	574	0.5
7. Dry forest land	68,226	55.4
Hill forest	65,090	52.8
Kerangas forest	2,869	2.3
Riverain forest	259	0.2
Beach forest	8	0.01
8. Swamp (Paya) (including fresh and salt water and mangrove and nipah)	1,390	1.1
TOTAL	122,784	100.0

Source : Yearbook of Statistics Sarawak 2007

Planimetric Measurement of Land Use Map, Sarawak 1991 Edition 3 (Revised 1/93)

SARAWAK : NATURAL RESOURCES

1	Coastline	1,051 km
2	Land with Agriculture Potential	2.2 million ha
3	Land under Forest Cover	8.2 million ha
4	Area under Peat Soil	1.7 million ha
5	Marine Fish Production Potential	300,000 tonnes per year
6	Hydropower Potential	20,000 MW
7	Surface Water	306 billion m ³
8	Minerals	Approx. reserves
	Petroleum	1,298 million barrels
	i) crude oil	848 million barrels
	ii) condensate	450 million barrels
	Gas	40.9 trillion S.C.F
	Coal	1,467 million tonnes
	Silica Sand	81.4 million tonnes
	Kaolin Clay	22.6 million tonnes

Source : Minerals and Geoscience Department Malaysia
Department of Marine Fisheries Sarawak
Petroleum Nasional Berhad
Ministry of Planning & Resource Management

Note : (S.C.F.) Standard Cubic Feet

KEY SUMMARY STATISTICS OF MALAYSIA POPULATION 2000

STATE	Population	Average Growth	State	Area	Population	Dependency	Sex
	2000 ('000)	1991-2000 (%)	Distribution (%)	(sq. km)	Density (per sq. km)	Ratio (%)	Ratio
SARAWAK	2,071.5	2.1	8.9	124,449	17	62.8	103
Sabah	2,603.5	4.0	11.2	73,620	35	68.8	107
Pahang	1,288.4	1.9	5.5	35,965	36	63.3	110
Perak	2,051.2	0.4	8.8	21,005	98	62.4	101
Johor	2,740.6	2.6	11.8	18,986	144	55.2	107
Kelantan	1,313.0	0.9	5.6	14,920	87	86.3	100
Terengganu	898.8	1.2	3.9	12,955	69	78.9	104
Kedah	1,649.8	2.1	7.1	9,426	175	65.9	99
Selangor	4,188.9	6.1	18.0	7,955	526	49.7	105
Negeri Sembilan	859.9	1.9	3.7	6,643	129	58.1	105
Melaka	635.8	2.0	2.7	1,651	385	58.9	101
Penang	1,313.4	1.8	5.6	1,030	1,274	46.8	99
Perlis	204.5	0.8	0.9	795	257	66.1	97
F. T. of Kuala Lumpur	1,379.3	1.3	5.9	243	5,676	40.4	103
F. T. of Labuan	76.1	3.6	0.3	92	827	64.1	110
MALAYSIA	23,274.7	2.6	100.0	329,735	71	59.2	104

Source : Population and Housing Census of Malaysia, 2000

Notes : Sex ratio - the ratio of the number of males for every 100 females.

The dependency ratio is a measure of the dependence that non-working people have on working people.

Figures presented in this table have been adjusted based on the estimates of under-enumeration derived from the Census Coverage Evaluation Survey.

SARAWAK : AREA, POPULATION, AVERAGE GROWTH RATE & POPULATION DENSITY BY DISTRICT

Division / District	Population	Population	Avg. Annual	Area	Population Density
	1991 (^{'000})	2000 (^{'000})	Gwth Rate (%) (1991-2000)	(sq. km)	(Person/Sq. km) (2000)
Kuching	369.1	494.1	3.2	1,862.8	265.3
Bau	36.0	41.8	1.7	884.4	47.3
Lundu	24.5	27.3	1.2	1,812.3	15.1
KUCHING DIVISION	429.5	563.3	3.0	4,559.5	123.5
Samarahan	33.2	47.0	3.9	407.1	115.4
Serian	71.9	79.6	1.1	2,039.9	39.0
Simunjan	35.1	37.3	0.7	2,217.6	16.8
Asajaya	24.4	28.5	1.7	302.8	94.2
SAMARAHAN DIVISION	164.6	192.4	1.7	4,967.4	38.7
Sri Aman	58.6	62.8	0.8	2,323.7	27.0
Lubok Antu	22.2	23.3	0.5	3,142.6	7.4
SRI AMAN DIVISION	80.9	86.0	0.7	5,466.3	15.7
Belong	44.0	50.4	1.5	2,493.9	20.2
Saratok	37.9	42.0	1.1	1,686.9	24.9
BETONG DIVISION	81.9	92.4	2.6	4,180.8	22.1
Sarikel	49.6	57.1	1.6	985.0	58.0
Maradong	27.0	28.9	0.8	719.0	40.3
Julau	28.1	31.7	1.3	2,628.4	12.1
SARIKEI DIVISION	104.7	117.8	1.3	4,332.4	27.2
Sibu	170.4	210.1	2.3	2,229.8	94.2
Kanowit	25.4	27.1	0.7	2,253.5	12.0
SIBU DIVISION	195.8	237.3	2.1	4,483.3	52.9
Mukah	41.8	44.8	0.8	6,331.0	7.1
Dalat	22.0	23.5	0.7	905.3	25.9
Matu	9.2	11.2	2.2	1,600.0	7.0
Daro	13.2	14.9	1.3	1,956.3	7.6
MUKAH DIVISION	86.2	94.3	5.0	10,792.6	8.7
Bintulu	86.1	139.0	5.3	7,220.4	19.3
Tatau	21.1	23.2	1.1	4,945.8	4.7
BINTULU DIVISION	107.3	162.3	4.6	12,166.2	13.3
Kapit	55.6	56.7	0.2	15,595.6	3.6
Song	17.6	19.2	1.0	3,935.2	4.9
Belaga	22.3	22.9	0.3	19,403.2	1.2
KAPIT DIVISION	95.5	98.8	0.4	38,934.0	2.5
Miri	161.4	221.1	3.5	4,707.1	47.0
Marudi	72.0	71.7	0.0	22,070.0	3.2
MIRI DIVISION	233.3	292.8	2.5	26,777.1	10.9
Limbang	33.9	39.8	1.8	3,978.1	10.0
Linwas	29.3	32.7	1.2	3,811.9	8.6
LIMBANG DIVISION	63.2	72.5	1.5	7,790.0	9.3
SARAWAK	1,642.8	2,009.9	2.2	124,449.5	16.2

Source : Population and Housing Census of Malaysia, 1991 & 2000, Department of Statistics Malaysia

Note : Population figures shown have not been adjusted for under-enumeration.

SARAWAK : POPULATION BY ADMINISTRATIVE DISTRICT 2000 & 2008

Administrative District	2000					2008 e
	Male	Female	Total	Urban	Rural	
SARAWAK	1,018,308	991,585	2,009,893	964,393	1,045,500	2,452,800
Kuching	247,537	246,572	494,109	422,240	71,869	606,500
Bau	21,499	20,325	41,824	-	41,824	49,800
Lundu	13,950	13,395	27,345	-	27,345	32,200
Samarahan	23,583	23,383	46,966	23,064	23,902	57,500
Serian	40,002	39,630	79,632	-	79,632	93,800
Simunjan	18,852	18,435	37,287	-	37,287	43,100
Asajaya	14,477	14,036	28,513	-	28,513	32,700
Sri Aman	31,244	31,531	62,775	21,243	41,532	72,300
Lubok Antu	11,584	11,671	23,255	-	23,255	24,000
Betong	25,346	25,046	50,392	-	50,392	67,400
Saratok	21,032	21,003	42,035	-	42,035	49,300
Sarikei	28,725	28,371	57,096	25,053	32,043	67,300
Maradong	14,180	14,762	28,942	-	28,942	33,600
Julau	16,185	15,538	31,723	-	31,723	39,500
Sibu	104,814	105,304	210,118	167,427	42,691	259,600
Kanowit	13,228	13,915	27,143	-	27,143	30,900
Mukah	23,054	21,783	44,837	-	44,837	53,800
Dalat	11,358	12,104	23,462	-	23,462	28,700
Matu	5,286	5,897	11,183	-	11,183	14,300
Daro	7,446	7,405	14,851	-	14,851	18,900
Bintulu	73,693	65,319	139,012	103,733	35,279	186,100
Tatau	12,225	11,016	23,241	-	23,241	28,900
Kapit	28,166	28,543	56,709	13,610	43,099	65,200
Song	9,562	9,674	19,236	-	19,236	23,100
Belaga	12,778	10,118	22,896	-	22,896	29,200
Miri	113,715	107,340	221,055	169,005	52,050	273,000
Marudi	37,333	34,380	71,713	-	71,713	85,100
Limbang	20,400	19,417	39,817	19,018	20,799	47,000
Lawas	17,054	15,672	32,726	-	32,726	39,600

Source : *Population and Housing Census of Malaysia 2000*

Monthly Statistical Bulletin Sarawak, July 2008

Notes : Figures presented in this table have not been adjusted for under-enumeration.

(e) estimate

**SARAWAK : POPULATION BY ETHNIC GROUP AND
ADMINISTRATIVE DISTRICT, 2000**

Administrative District	Total	Iban	Chinese	Malay	Bidayuh
Kuching	509,374	47,597	197,955	180,957	63,943
Bau	43,190	648	9,205	3,583	29,215
Lundu	28,070	3,750	3,539	9,328	10,717
Samarahan	48,068	7,516	8,682	27,190	3,138
Serian	82,042	12,147	10,204	9,519	49,117
Simunjan	38,098	16,673	1,475	19,342	307
Asajaya	29,012	2,421	2,532	23,720	119
Sri Aman	64,475	37,337	8,262	17,748	453
Lubok Antu	23,966	20,729	2,262	694	73
Betong	51,426	18,764	2,321	29,919	162
Saratok	43,035	22,103	2,892	17,641	67
Sarikei	59,043	16,934	22,640	8,115	203
Maradong	29,917	12,606	11,052	4,383	134
Julau	32,668	31,034	1,070	256	80
Sibu	218,106	53,104	119,550	20,664	1,505
Kanowit	27,982	23,168	3,408	859	57
Mukah	46,182	24,637	3,416	1,326	157
Dalat	24,152	8,129	1,486	407	28
Matu	11,498	676	468	544	7
Daro	15,268	869	490	749	12
Bintulu	143,429	56,424	28,995	13,981	1,923
Tatau	23,943	15,154	1,572	991	123
Kapit	58,430	47,900	4,679	1,657	274
Song	19,806	17,865	933	731	69
Belaga	23,611	2,820	1,352	1,027	105
Miri	228,231	65,102	70,993	41,559	3,692
Marudi	73,922	25,547	6,190	4,325	637
Limbang	40,959	11,154	6,338	10,122	271
Lawas	33,603	927	3,269	10,933	168
Total	2,071,506	603,735	537,230	462,270	166,756

**SARAWAK : POPULATION BY ETHNIC GROUP AND
ADMINISTRATIVE DISTRICT, 2000 (CONT'D)**

Administrative District	Melanau	Other Bumiputera	Others	Non Malaysian Citizens
Kuching	3,608	3,301	3,434	8,579
Bau	64	146	87	242
Lundu	86	69	49	532
Samarahan	506	601	225	210
Serian	149	180	115	611
Simunjan	72	52	132	45
Asajaya	61	86	7	66
Sri Aman	247	111	30	287
Lubok Antu	15	40	5	148
Betong	76	66	11	107
Saratok	134	59	43	96
Sarikei	9,501	111	29	1,510
Maradong	1,572	86	20	64
Julau	116	85	6	21
Sibu	14,514	1,131	248	7,390
Kanowit	355	96	9	30
Mukah	15,665	267	78	636
Dalat	13,946	72	6	78
Matu	9,732	37	3	31
Daro	13,096	31	3	18
Bintulu	16,614	7,025	660	17,807
Tatau	1,397	2,450	63	2,193
Kapit	961	1,848	42	1,069
Song	85	103	9	11
Belaga	215	17,072	56	964
Miri	9,447	20,568	1,840	15,030
Marudi	430	34,016	322	2,455
Limbang	195	11,869	147	863
Lawas	125	16,112	424	1,645
Total	112,984	117,690	8,103	62,738

Source : Yearbook of Statistics Sarawak 2007

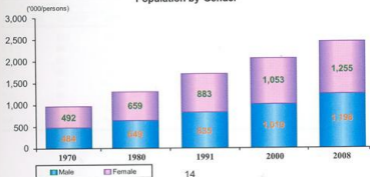
Note : Figures in this table have been adjusted based on the estimates of under-enumeration derived from the Census Coverage Evaluation Survey.

SARAWAK : POPULATION BY AGE GROUP

Age Group	1991 (^{'000})	2000 (^{'000})	2008 e (^{'000})
0 - 4	223.3	265.6	283.1
5 - 9	210.1	231.5	276.7
10 - 14	192.1	213.0	250.9
15 - 19	180.3	196.9	220.0
20 - 24	166.6	176.7	205.3
25 - 29	156.4	173.0	190.9
30 - 34	129.6	164.2	176.4
35 - 39	110.4	147.9	166.8
40 - 44	82.2	127.1	158.1
45 - 49	68.3	102.7	137.7
50 - 54	52.2	79.9	113.4
55 - 59	43.3	59.5	89.7
60 - 64	36.1	44.7	65.2
65 - 69	25.4	34.6	46.6
70 - 74	20.3	25.3	31.9
75+	21.6	28.9	40.0
Total	1,718.4	2,071.5	2,452.8

Source : Yearbook of Statistics Sarawak 2007
 Monthly Statistical Bulletin Sarawak, July 2008
 Note : (e) Mid-year estimate.

Population by Gender



SARAWAK : LIVE BIRTHS AND CRUDE BIRTH RATE

Ethnic Group	2004		2005		2006	
	Number	Crude Rate	Number	Crude Rate	Number	Crude Rate
Total	42,972	19.4	42,133	18.7	42,086	18.4
Malay	10,693	21.4	10,434	20.5	10,467	20.2
Iban	12,381	19.2	12,154	18.6	12,409	18.7
Bidayuh	3,503	19.5	3,462	19.0	3,366	18.2
Melanau	2,684	22.1	2,730	22.1	2,690	21.4
Other Bumiputera	2,873	22.7	2,778	21.6	2,649	20.3
Chinese	9,550	16.7	9,299	16.1	9,126	15.6
Others *	1,288	17.4	1,276	17.0	1,379	18.1

SARAWAK : DEATHS AND CRUDE DEATH RATE

Ethnic Group	2004		2005		2006	
	Number	Crude Rate	Number	Crude Rate	Number	Crude Rate
Total	9,355	4.2	9,181	4.1	9,402	4.1
Malay	1,965	3.9	1,780	3.5	1,914	3.7
Iban	2,651	4.1	2,800	4.3	3,002	4.5
Bidayuh	672	3.7	695	3.8	683	3.7
Melanau	538	4.4	589	4.8	691	5.5
Other Bumiputera	936	7.4	783	6.1	640	4.9
Chinese	2,401	4.2	2,371	4.1	2,345	4.0
Others *	192	2.6	163	2.2	127	1.7

SARAWAK : INFANT DEATHS AND INFANT MORTALITY RATE

Ethnic Group	2004		2005		2006	
	Number	Crude Rate	Number	Crude Rate	Number	Crude Rate
Total	231	5.5	251	6.0	261	6.2
Malay	65	6.1	73	7.0	90	8.6
Iban	57	4.6	73	6.0	60	4.8
Bidayuh	30	8.6	18	5.2	26	7.7
Melanau	14	5.2	13	4.8	22	8.2
Other Bumiputera	5	1.7	13	4.7	15	5.7
Chinese	56	5.9	58	6.2	42	4.6
Others *	4	3.1	3	2.4	6	4.4

Source : Monthly Statistical Bulletin Sarawak, March 2009

Note : * Includes non-Malaysian citizens

MALAYSIA AND SARAWAK : PERCENTAGE DISTRIBUTION OF EMPLOYED PERSONS BY INDUSTRY

Sector	2005		2006		2007	
	(%)		(%)		(%)	
	Malaysia	Sarawak	Malaysia	Sarawak	Malaysia	Sarawak
Agriculture, Forestry, Livestock and Fishing	14.6	30.3	14.6	31.4	14.7	30.4
Mining & Quarrying	0.4	0.7	0.4	0.9	0.4	0.6
Manufacturing	19.8	11.8	20.3	12.3	18.8	11.6
Construction	9.0	9.2	8.8	9.4	8.8	8.8
Electricity, Gas and Water	0.6	0.5	0.7	0.8	0.6	0.6
Wholesale and Retail Trade, Restaurants and Hotels	22.8	19.0	23.1	19.0	23.4	19.0
Transport, Storage and Communication	5.4	4.3	5.3	4.1	5.1	3.8
Financing, Insurance, Real Estate and Business Services	7.1	5.0	7.3	4.5	8.0	5.0
Community, Social, Personal Services and Other Services	20.3	19.1	19.5	17.5	20.2	20.2
Total	100.0	100.0	100.0	100.0	100.0	100.0
Total Employed Persons	10,045,400	910,900	10,275,400	918,300	10,538,100	954,100
Total Labour Force	10,413,400	950,300	10,628,900	958,000	10,889,500	997,400

Source : Malaysia Labour Force Survey Report 2007
 Yearbook of Statistics Sarawak 2007

**SARAWAK
ECONOMY**

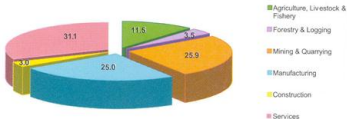
MALAYSIA AND SARAWAK : GROSS DOMESTIC PRODUCT

	2006	2007 p	2008 f
MALAYSIA			
GDP at Constant 2000 Prices (RM Million)	475,192	505,353	533,910
Growth Rate (%)	5.8	6.3	5.7
GDP at Current Prices (RM Million)	573,736	641,864	715,865
Growth Rate (%)	9.8	11.9	11.5
SARAWAK			
GDP at Constant 1987 Prices (RM Million)	23,243	24,602	25,843
Growth Rate (%)	5.5	5.8	5.0
GDP at Current Prices (RM Million)	60,286	65,906	69,712
Growth Rate (%)	16.3	9.3	5.8

Source : *The Malaysian Economy in Brief, May 2008 / State Planning Unit*

Notes : (p) preliminary (f) forecast

Sarawak : GDP Share (%) by Sector, 2008



SARAWAK : GROSS DOMESTIC PRODUCT

Sector	2006		2007 e		2008 f	
	RM Mil	% Chg	RM Mil	% Chg	RM Mil	% Chg
REAL GDP (at constant 1987 prices)						
Agriculture, Livestock and Fishery	2,507	8.9	2,734	9.1	2,963	8.4
Forestry and Logging	914	-0.4	912	-0.3	907	-0.5
Mining & Quarrying	6,180	4.3	6,447	4.3	6,702	4.0
Manufacturing	5,783	5.0	6,120	5.8	6,464	5.6
Construction	702	5.6	747	6.4	779	4.2
Services	7,157	6.5	7,642	6.8	8,028	5.0
GDP at purchasers' value	23,243	5.5	24,602	5.8	25,843	5.0
GDP / CAPITA	9,864		10,245		10,551	
NOMINAL GDP (at current prices)						
Government Final Consumption	4,496	5.8	4,897	8.9	5,162	5.4
Private Final Consumption	10,542	4.9	11,261	6.8	12,009	6.6
Gross Fixed Capital Formation	4,838	7.5	5,330	10.2	5,676	6.5
Exports of Goods & Services	66,926	20.4	72,207	7.9	76,757	6.3
Less : Imports of Goods & Services	22,603	1.2	25,920	14.7	28,007	8.1
GDP at purchasers' value	60,296	16.3	65,906	9.3	69,712	5.8
GDP / CAPITA	25,583		27,446		28,461	

Source : State Planning Unit

Notes : (e) estimate (f) forecast

SARAWAK : EXTERNAL SECTOR

Commodity Section (RM Million)	2005	2006 p	2007 p
EXPORTS	51,464.2	61,939.8	67,526.1
IMPORTS	22,208.3	22,423.5	25,790.8
TRADE BALANCE	29,255.9	39,516.3	41,735.3
Exports by Commodity Section (RM Million)			
Total	51,464.2	61,939.8	67,526.1
Food	492.4	480.2	582.2
Beverages and Tobacco	76.7	79.7	97.2
Crude Materials, Inedible	3,441.7	3,614.5	3,482.6
Mineral Fuels, Lubricants etc	36,814.2	44,924.9	48,721.0
Animal and Vegetable Oils and Fats	2,085.0	2,567.2	4,268.4
Chemicals	926.6	1,086.5	922.1
Manufactured Goods	5,053.7	6,297.5	6,124.9
Machinery & Transport Equipment	2,370.1	2,682.3	3,152.9
Miscellaneous Manufactured Articles	164.5	169.8	140.9
Other Miscellaneous	39.3	37.2	33.9
Imports by Commodity Section (RM Million)			
Total	22,208.3	22,423.5	25,790.8
Food	1,880.0	2,036.4	2,181.5
Beverages and Tobacco	273.6	266.8	290.4
Crude Materials, Inedible	331.1	350.1	370.7
Mineral Fuels, Lubricants, etc	3,529.1	4,229.0	3,847.6
Animal and Vegetable Oils & Fats	136.6	84.2	116.3
Chemicals	2,442.1	2,798.2	3,459.2
Manufactured Goods	3,270.3	3,312.7	4,153.1
Machinery and Transport Equipment	8,549.1	7,529.4	9,516.8
Miscellaneous Manufactured Articles	1,532.7	1,532.7	1,549.2
Other Miscellaneous	263.7	284.0	306.0

Source : Yearbook of Statistics Sarawak, Various Issues

Note : (p) preliminary

SARAWAK : MAJOR EXPORT ITEMS

Items	2005	2006 p	2007 p
Rubber			
Quantity ('000 kg)	64,607	100,423	82,740
Value (RM '000)	229,736	468,556	418,735
Export price (sen/kg fob)	356	467	506
Black pepper			
Quantity (tonne)	14,937	12,386	11,227
Value (RM '000)	82,517	88,025	120,228
Export price (RM/tonne fob)	5,524	7,107	10,709
White pepper			
Quantity (tonne)	3,571	4,328	3,831
Value (RM '000)	33,075	47,959	57,286
Export price (RM/tonne fob)	9,261	11,081	14,953
Palm oil (crude & processed)			
Quantity (tonne)	1,344,241	1,508,902	1,599,531
Value (RM '000)	1,910,137	2,298,229	3,839,746
Export price (RM/tonne fob)	1,421	1,523	2,401
Liquefied Natural Gas (LNG)			
Quantity ('000 tonnes)	21,641	21,534	22,661
Value (RM '000)	21,340,181	23,284,697	26,151,763
Export price (RM/tonne fob)	986	1,081	1,154
Crude Petroleum			
Quantity ('000 tonnes)	9,701	10,079	10,496
Value (RM '000)	14,645,100	19,586,734	20,598,032
Export price (RM/tonne fob)	1,510	1,943	1,963
Saw Logs			
Quantity ('000 cu. metre)	4,372	3,794	3,600
Value (RM '000)	1,850,000	1,790,520	1,662,947
Export price (RM/cu. metre fob)	423	472	462
Sawn Timber			
Quantity ('000 cu. metre)	1,091	1,044	1,112
Value (RM '000)	937,923	944,380	1,004,338
Export price (RM/cu. metre fob)	860	905	904

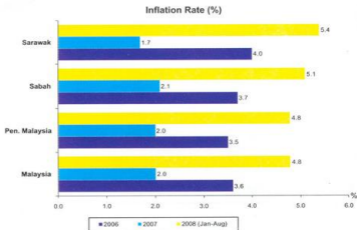
Source : Yearbook of Statistics Sarawak, 2007

Note : (p) preliminary

INFLATION (2005=100)

Commodity Section	2006	2007	2008 (Jan - Aug)
INFLATION	4.0	1.7	5.4
Food & Non-Alcoholic Beverages	3.4	2.9	8.4
Alcoholic Beverages & Tobacco	5.5	6.3	5.5
Clothing & Footwear	-0.5	-0.9	-1.1
Housing, Water, Electricity, Gas & Other Fuels	1.3	0.9	0.8
Furnishings, Household Equipment & Routine Household Maintenance	0.5	0.8	1.8
Health	1.0	1.0	2.3
Transport	12.6	1.6	9.3
Communication	-1.2	-1.2	-0.9
Recreation Services & Culture	0.5	0.3	1.2
Education	0.9	2.0	2.2
Restaurants & Hotels	3.9	3.8	9.5
Miscellaneous Goods & Services	2.3	0.8	3.6
Durable Goods	-0.9	-1.4	1.2
Semi-Durable Goods	-0.4	-0.5	-0.3
Non-Durable Goods	7.5	2.4	8.6
Services	2.0	1.9	3.6

Source : *Malaysia Consumer Price Index, August 2008*



SARAWAK : CAPITAL INVESTMENT IN MANUFACTURING PROJECTS

Manufacturing Projects	2005	2006	2007
<i>(RM Million)</i>			
DOMESTIC	1,253	2,101	1,456
FOREIGN	242	517	96
TOTAL	1,495	2,618	1,552

Approved Capital Investment

Commodity Section	2005	2006	2007
<i>(RM Million)</i>			
Food	206	401	203
Beverages	14	9	0
Wood Based & Rattan Products	558	564	363
Printing, Publishing & Allied Industries	6	436	0
Basic Metal Product	62	27	779
Chemical & Chemical Products	296	599	92
Petroleum & Other Related Products	2	0	0
Non Metallic Mineral Products	72	94	7
Electrical Machinery , Appliances & Supplies	6	418	3
Transport Equipment	227	50	72
Textiles & Garments	2	0	0
Rubber Products	0	3	10
Miscellaneous Manufacturing Industry	43	17	23
Total Capital Investment	1,495	2,618	1,552

Source : Ministry of Industrial Development

Note : Including projects supported under ICA

MALAYSIA : APPROVED MANUFACTURING PROJECTS (ICA) BY STATE

State	2006		2007		2008 (Jan - July)	
	Number	Total Capital Investment (RM Million)	Number	Total Capital Investment (RM Million)	Number	Total Capital Investment (RM Million)
Selangor	311	5,254	318	11,181	155	6,405
Johor	221	7,638	188	9,243	89	10,523
Penang	156	5,351	134	4,769	82	5,709
Pahang	33	1,793	28	1,564	17	700
Kedah	59	9,880	46	13,990	32	2,475
Perak	62	1,181	59	2,035	25	2,139
Sabah	75	5,069	41	3,258	25	663
Melaka	55	1,401	38	3,838	18	273
Sarawak	31	858	23	1,034	20	13,077
Negeri Sembilan	37	1,800	40	2,676	15	787
Terengganu	7	2,934	11	6,163	5	524
F. T. of Kuala Lumpur	18	504	12	92	10	114
Kelantan	6	47	9	83	1	16
Perlis	3	61	2	7	1	91
F. T. of Labuan	3	2,223	-	-	1	10
Total	1,077	45,993	949	59,932	496	43,506

Source : www.mida.gov.my

AGRICULTURE

PLANTED AREA OF MAIN CROPS

MALAYSIA	2005	2006	2007 p
<i>('000 Hectares)</i>			
Oil Palm	4,051.3	4,165.2	4,304.9
Cocoa	33.4	33.0	29.2
Rubber	1,259.1	1,251.1	1,229.9
Paddy (Wet & Dry/Hill)	666.7	676.0	674.4
SARAWAK	2005	2006	2007
<i>('000 Hectares)</i>			
Oil Palm	543.4	591.5	664.6
Cocoa	4.9	4.9	4.9
Rubber	156.8	157.1	158.1
Paddy (Wet & Dry/Hill)	127.2	127.5	133.9
Pepper	12.7	12.7	12.7
SABAH	2005	2006	2007
<i>('000 Hectares)</i>			
Oil Palm	1,209.4	1,239.5	1,278.2
Cocoa	21.6	18.8	17.7
Rubber	66.4	70.4	65.4
Paddy (Wet & Dry/Hill)	39.6	39.6	na

Source : Yearbook of Statistics, Various Issues

Notes : (p) preliminary (na) not available

SARAWAK : MAJOR AGRICULTURE PRODUCTION

Commodity	2005	2006	2007 p
Crude Palm Oil ('000 tonnes)	1,336.6	1,503.1	1,634.6
Dry Cocoa Beans ** ('000 tonnes)	2.3	1.9	1.8 e
Rubber * ('000 tonnes)	64.6	100.4	82.7
Pepper (White & Black) * ('000 tonnes)	18.5	16.7	18.9

Source : Yearbook of Statistics Sarawak, Various Issues
 Monthly Statistical Bulletin Sarawak, April 2008
 Malaysian Cocoa Board **

Notes : * Refer to export figures
 (p) preliminary (e) estimate

SARAWAK : NUMBER OF LIVESTOCK

Selected Livestock	2005	2006	2007
Cattle			
Population	12,375	12,918	11,919
Recorded Slaughter	693	589	558
Buffaloes			
Population	9,237	8,965	7,687
Recorded Slaughter	545	149	128
Goats			
Population	9,960	11,146	9,202
Recorded Slaughter	797	227	218
Sheep			
Population	4,134	3,334	1,912
Recorded Slaughter	145	-	-
Swine			
Population	386,705	423,858	231,421
Recorded Slaughter	278,428	217,962	230,078

Source : Department of Agriculture Sarawak

SARAWAK : LANDING OF MARINE FISH BY GEAR GROUP

Gear Group	2005	2006 p	2007 p
<i>(Tonne)</i>			
Trawl Nets	116,737	98,560	89,298
Drift/Gill Nets	25,927	25,865	24,409
Bag Nets	3,578	9,445	3,674
Push/Scoop Lift Nets	607	379	648
Hooks and Lines	2,520	3,775	3,213
Others	9,308	10,641	10,030
TOTAL	158,677	148,665	131,272

Source : *Monthly Statistical Bulletin Sarawak, March 2008*

Note : (p) preliminary

SARAWAK : PRODUCTION OF FOREST AND FOREST PRODUCTS

Particulars	2005	2006	2007 p
Saw Logs ('000 m ³)	12,036	11,864	11,890
Sawn Timber ('000 m ³)	1,200	1,248	1,330
Plywood ('000 m ³)	3,171	3,400	3,800
Laminated Boards ('000 m ³)	60	47	52
Mouldings / Dowels ('000 m ³)	19	16	20
Woodchips ('000 m ³)	137	226	243
Veneer ('000 m ³)	267	300	483
Poles ('000)	3,470	4,729	4,384
Cordwood ('000 tonne)	92	78	79
Charcoal (tonne)	279	65	17

Source : Yearbook of Statistics Sarawak, Various Issues

Notes : (p) preliminary

**EDUCATION,
HEALTH AND TOURISM**

SARAWAK : EDUCATION AND TRAINING

Particulars	2004	2005	2006
Total Number of Students	493,490	501,671	507,361
Primary School Enrolment	294,149	291,835	293,739
Secondary School Enrolment	195,159	206,092	210,000
Technical Secondary School	4,182	3,744	3,622
Total Number of Teachers	29,797	30,614	31,561
Teachers in Primary School	18,487	18,968	19,311
Teachers in Secondary School	10,738	11,054	11,687
Technical Secondary School	572	592	563
Total Number of Schools	1,445	1,456	1,463
Primary Schools	1,263	1,267	1,269
Secondary Schools	175	182	187
Technical Secondary School	7	7	7

Source : Yearbook of Statistics Sarawak 2007

SARAWAK : HEALTH SERVICES

Health Services	2004	2005	2006
Hospital *	22	22	22
Health Clinic, Rural Clinic, Maternal & Child Health Clinic, Mobile Clinic and Dental Clinic	543	548	546
Number of Beds	4,760	4,774	4,770
Doctors	930	1,005	1,002
Nurses	2,052	2,200	2,393
Dentists	137	154	151

Source : Yearbook of Statistics Sarawak 2007

Note : * Including Sentosa Hospital & Rajah Charles Brooke Memorial Hospital.

SARAWAK : VISITOR ARRIVALS BY COUNTRY OF ORIGIN

Country	2006	2007	2008 (Jan - June)	
			Number	% Share
Brunei	1,088,331	1,474,522	684,259	28.9
Singapore	35,761	38,291	18,489	0.8
Thailand	13,365	19,061	10,936	0.5
Indonesia	330,007	410,224	206,869	8.7
Philippines	70,785	86,344	47,227	2.0
Japan	10,437	8,733	4,462	0.2
Taiwan	6,920	6,930	3,107	0.1
Hong Kong	924	551	232	0.0
China	19,608	24,261	17,482	0.7
India	12,896	17,193	8,659	0.4
United Kingdom & Ireland	35,865	36,029	15,747	0.7
Eastern & Western Europe	26,180	34,674	12,894	0.5
USA	9,056	13,617	4,929	0.2
Canada	7,456	8,499	3,654	0.2
Australia & New Zealand	23,566	27,488	10,384	0.4
Others	141,859	174,404	36,111	1.5
Malaysia	2,219,163	2,898,737	1,281,399	54.1
Total	4,052,179	5,279,558	2,366,840	100.0

Source : *Monthly Statistical Bulletin Sarawak, August 2008*

TRANSPORT

MALAYSIA AND SARAWAK : ROAD BY SURFACE TYPE

Type	2004		2005		2006	
	Km.	Share (%)	Km.	Share (%)	Km.	Share (%)
MALAYSIA (329,961 Sq. Km)						
Paved	59,254	76.3	67,851	78.0	71,292	79.1
Gravel	15,138	19.5	15,989	18.4	15,707	17.4
Earth	3,303	4.3	3,185	3.7	3,128	3.5
Total	77,695	100.0	87,025	100.0	90,127	100.0
SARAWAK (124,449 Sq. Km)						
Paved	8,312	73.1	8,880	78.0	10,191	77.0
Gravel	2,631	23.1	2,124	18.7	2,515	19.0
Earth	425	3.7	383	3.4	525	4.0
Total	11,368	100.0	11,387	100.0	13,231	100.0

Source : Yearbook of Statistics Malaysia 2007
 Yearbook of Statistics Sarawak 2007

SARAWAK : TOTAL MOTOR VEHICLES REGISTERED AS AT END OF YEAR

Type	2005	2006	2007
Motor Cars	383,184	409,517	435,154
Motorcycles	426,705	452,402	480,425
Taxi, Hire and Drive Cars	5,555	5,828	5,998
Buses	2,566	2,600	2,621
Goods Vehicles	49,513	52,805	56,599
Others	98,376	106,375	114,506
Total	965,899	1,029,527	1,095,303

Source : Yearbook of Statistics Sarawak 2007

Monthly Statistical Bulletin Sarawak, March 2008

SARAWAK : AIRCRAFT MOVEMENTS AT PRINCIPAL AIRPORTS

Airports	2006	2007 p	2008 p (Jan - July)
Kuching	40,286	37,370	22,053
Sibu	15,163	11,686	8,218
Miri	42,680	34,598	21,638
Bintulu	10,990	6,289	6,026
Total	109,119	89,943	57,935

Source : *Yearbook of Statistics Sarawak 2007*

Monthly Statistical Bulletin Sarawak, August 2008

Note : (p) preliminary

SARAWAK : ARRIVALS AND DEPARTURES OF VESSELS BY PORT

Ports	2006		2007		2008 (Jan - June)	
	Arrivals	Departures	Arrivals	Departures	Arrivals	Departures
	Kuching					
Number	4,208	4,208	3,739	3,739	1,783	1,783
'000 N.R.T.	4,825	4,825	4,621	4,621	2,244	2,244
Rajang						
Number	3,111	3,112	3,025	3,025	1,499	1,499
'000 N.R.T.	4,644	4,646	4,166	4,166	1,954	1,954
Bintulu						
Number	4,881	4,881	4,533	4,533	2,200	2,200
'000 N.R.T.	23,013	23,014	22,456	22,456	10,789	10,789
Miri						
Number	1,401	1,401	1,268	1,268	752	752
'000 N.R.T.	3,563	3,563	3,090	3,090	2,136	2,136
Others						
Number	910	909	738	731	350	366
'000 N.R.T.	282	284	213	213	89	95
Total						
Number	14,511	14,511	13,303	13,296	6,584	6,600
'000 N.R.T.	36,327	36,332	34,546	34,546	17,212	17,218

Source : Yearbook of Statistics Sarawak 2007

Monthly Statistical Bulletin Sarawak, August 2008

Note : (N.R.T.) Net Registered Tonnes

SARAWAK : CARGO LOADED AND DISCHARGED AT PRINCIPAL PORTS

Port Authority	2006	2007	2008 (Jan - June)
Loaded ('000 freight tonnes)	42,795	46,195	24,268
Kuching	1,986	2,348	1,095
Rajang	3,467	3,441	1,870
Bintulu	32,032	34,314	18,214
Miri	5,310	6,092	3,089
Discharged ('000 freight tonnes)	10,672	11,611	6,233
Kuching	5,218	5,299	2,745
Rajang	1,353	1,541	802
Bintulu	3,734	4,269	2,348
Miri	367	502	338
Total	53,467	57,806	30,501

Source : Yearbook of Statistics Sarawak 2007

Monthly Statistical Bulletin Sarawak, August 2008

**UTILITIES AND
OTHER SERVICES**

SARAWAK : CONSUMPTION AND PRODUCTION OF WATER

Particulars	2006	2007 p	2008 p (Jan - June)
Production ('000 cu. metres)	296,412	314,260	160,720
Consumption ('000 cu. metres)	210,899	224,471	115,575

SARAWAK : UNIT GENERATED AND CONSUMPTION OF ELECTRICITY

Particulars	2006	2007 p	2008 p (Jan - July)
Unit Generated (million KWH)	5,968.8	6,352.8	3,791.8
Consumption (million KWH)	5,156.7	5,433.7	3,213.0
Installed Capacity (MW)	1,195.5	1,233.3	739.8 e

Source : Yearbook of Statistics Sarawak, Various Issues
Monthly Statistical Bulletin Sarawak, August 2008

Notes : (p) preliminary (e) estimate

SARAWAK : PRINCIPAL STATISTICS OF ALL PROFESSIONS * (PRIVATE SECTOR)

Professions	1999	2002	2003
No. of Establishments	853	912	970
Revenue (RM '000)	426,866	497,074	562,886
Expenditure (RM '000)	306,307	384,496	433,806
Salaries and wages paid (RM '000)	122,739	158,039	181,928
Value of fixed assets owned (RM '000)	79,250	110,158	111,566

Source : *Yearbook of Statistics Sarawak 2007*

Notes : * Include engineers, accountants, architects, building draughtsman, dentists, lawyers, doctors, surveyors and veterinary surgeons.

Census / Survey was not conducted for the years 2000, 2001 and 2004.

SARAWAK : PRINCIPAL STATISTICS OF SELECTED PROFESSIONS

Professions	2002	2003	2004
Real Estates			
No. of Establishments	11	13	13
Revenue (RM '000)	1,026	1,230	1,399
Expenditure (RM '000)	638	779	883
Salaries and wages paid (RM '000)	199	234	281
Value of fixed assets owned (RM '000)	1,392	1,344	1,673
Tourists and Travel Agencies			
No. of Establishments	107	104	104
Revenue (RM '000)	112,166	93,285	118,562
Expenditure (RM '000)	110,312	90,503	113,158
Salaries and wages paid (RM '000)	15,620	16,048	17,391
Value of fixed assets owned (RM '000)	15,890	14,829	17,027
Hotels and Lodgings			
No. of Establishments	285	287	281
Revenue (RM '000)	278,100	307,460	319,654
Expenditure (RM '000)	287,379	303,841	304,129
Salaries and wages paid (RM '000)	66,089	68,054	73,259
Value of fixed assets owned (RM '000)	1,322,734	1,300,130	1,288,129

Source : Yearbook of Statistics Sarawak 2007

FINANCE

SARAWAK : REVENUE AND EXPENDITURE

Revenue / Expenditure	2004	2005	2006 p
<i>(RM Million)</i>			
State			
Revenue	2,929	3,229	3,974
Operating Expenditure	2,499	2,822	2,752
Development Revenue	1,505	1,807	2,075
Development Expenditure	1,299	1,827	1,771
Federal			
Revenue	3,080	3,406	3,385
Operating Expenditure	3,376	3,470	2,047
Development Expenditure	1,265	872	185

Source : Yearbook of Statistics Sarawak 2007

Note : (p) preliminary

**SARAWAK : IMPORT AND EXPORT DUTIES, SALES TAX,
EXCISE AND SERVICE TAX**

Items	2005	2006	2007 (Jan - June)
<i>(RM '000)</i>			
State			
Import Duties	-	-	-
Export Duties	148	15	189
Excise	-	-	-
Federal			
Import Duties	88,246	67,971	32,892
Export Duties	528,682	722,804	361,706
Sales Tax	154,374	124,074	68,840
Excise	100,508	75,024	45,083
Service Tax	56,922	58,633	31,931

Source : Yearbook of Statistics Sarawak 2007

**THE 9th MALAYSIA PLAN
MISSIONS & STRATEGIES**

THRUSTS OF THE NATIONAL MISSION

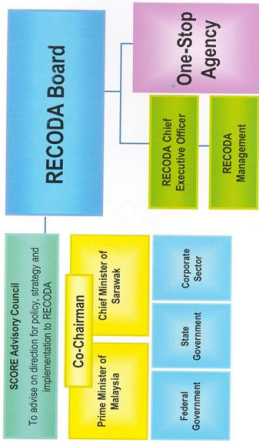
National Mission	
<i>1</i>	To Move the Economy Up the Value Chain
<i>2</i>	To Raise the Capacity for Knowledge and Innovation and Nurture "First Class Mentality"
<i>3</i>	To Address Persistent Socio-Economic Inequalities Constructively and Productively
<i>4</i>	To Improve the Standard and Sustainability of Quality of Life
<i>5</i>	To Strengthen the Institutional and Implementation Capacity

STATE DEVELOPMENT STRATEGIES TO SUPPORT THE NATIONAL THRUSTS

1	Developing Human Capital and R&D Capability
	<p>To raise the standard for our human capital and our Research and Development (R&D) capability. Human capital is a vital and most important asset, both for the Nation as well as for the State. We must therefore intensify our efforts in raising the individual capabilities for our people so that they can become knowledge and skilled workers who can work locally as well as anywhere in the world.</p>
2	Speeding Up Growth in Rural Areas
	<p>The vastness of the rural areas of the State, where the future potential of the Sarawak economy lies, represents great opportunities available for us to develop the State. The rural areas are naturally our development focus to quickly spread the benefits of development to our people as well as to bring about renewed growth in traditional sectors. We must speed up the growth of the rural areas through specific development plans and programmes.</p>
3	Engaging the Private Sector
	<p>To actively engage the private sector in the wider fields of economic activities. With our focus in developing our human capital and R&D capability, it is logical that the private sector initiative would be required to be more involved in the State economy.</p>
4	Capitalising on Energy Resources
	<p>As a land with an exceptional variety of terrain and natural resources, we need also to learn to capitalize on the energy resources in the State so as to generate energy-based industries and make the State the powerhouse of the region.</p>
5	Enhancing the Quality of Life
	<p>All our efforts in bringing development to the State have the purpose of raising the quality of life of our people. In this context, we keep on pushing our efforts to complete our coverage of treated water supply, electricity supply, better educational facilities and public health services to our rural communities.</p>
6	Improving the Implementation Machinery and Delivery System
	<p>In the Ninth Malaysia Plan, timely and effective implementation of projects will be the order of the day. As such, it is vital that we have an implementation plan, as well as monitoring, auditing and reporting systems to ensure all projects and programmes meet their stated objectives and are implemented on schedule in accordance with the necessary mechanism and procedures.</p>

SCORE

Sarawak Corridor of Renewable Energy



SCORE AREA : CENTRAL REGION OF SARAWAK

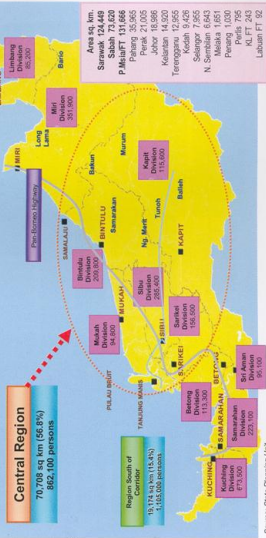
Southern and Northern Region are relatively well developed than the Central Region....

Region North of Corridor
34,567 sq km (27.8%)
437,100 persons

Central Region

70,708 sq km (56.8%)
862,100 persons

Region South of Corridor
19,174 sq km (15.4%)
1,105,000 persons



SCORE : KEY ELEMENTS

ENERGY : Generation & Transmission

PHYSICAL INFRASTRUCTURE : Roads, Ports, Airports, Utilities

MANPOWER : Education, Training and R&D

INSTITUTIONAL SETUP : Regional Corridor Development Authority (RECODA)

INDUSTRIES : Resource-Based &
Energy-Intensive

INDUSTRIES : SMIs and SMEs

NEW GROWTH NODES : Tanjung Manis,
Mukah, Samalaju, Baram and Tunoh

NEW SECONDARY NODES : Balleh,
Murum, Samarakan, Long Lama,
Semop, Balingian, Selangau, Bakun
and Ng. Merit,

10 PRIORITY INDUSTRIES

1		Aluminium Industry
2		Steel Industries
3		Oil-based Industry
4		Glass Industries
5		Palm Oil Industry

6		Fishing & Aquaculture Industry
7		Livestock Industry
8		Timber-based Industry
9		Marine Engineering
10		Tourism Industry

Notes

Notes

Notes

Notes

Notes

Notes

Prepared by

State Planning Unit
Chief Minister's Department
6th & 7th Floor, Wisma Bapa Malaysia
Petra Jaya
93502 Kuching, Sarawak

Tel: 082-441957 / 492276
Fax: 082-449481

Homepage: <http://www.spu.sarawak.gov.my>



ISSN 1965 - 4889