

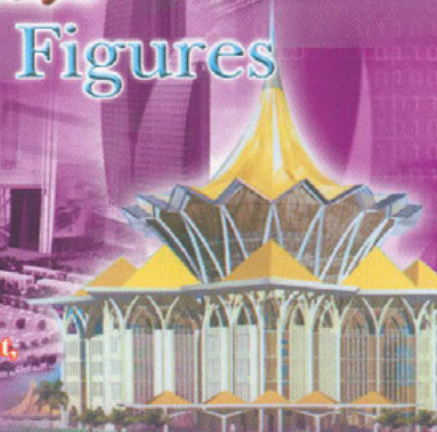


PANDUAN
PANDUAN



Sarawak Facts and Figures 2007

State Planning Unit
Chief Minister's Department,
Sarawak.



RUKUNEGARA DECLARATION

OUR NATION, MALAYSIA, being dedicated :

To achieving a greater unity of all her peoples ;

To maintaining a democratic way of life ;

To creating a just society in which the wealth of the nation shall be equitably shared ;

To ensuring a liberal approach to her rich and diverse cultural traditions ;

To building a progressive society which shall be oriented to modern science and technology ;

We, her peoples, pledge our united efforts to attain these ends guided by these principles :

Belief in God

Loyalty to King and Country

Upholding the Constitution

Rule of Law

Good Behaviour and Morality

SARAWAK FACTS AND FIGURES

CONTENTS	Page
A. BACKGROUND INFORMATION	
State of Sarawak	1
Facts on Sarawak	2
Basic Statistics	3
Exchange Rates	3
The State Government	4
Sarawak : Administrative Divisions and Districts	5
Sarawak : Niche Economic Activities	6
Sarawak : Land Use	7
Sarawak : Natural Resources	8
Key Summary Statistics of Malaysia Population 2000	9
Sarawak : Area, Population, Average Growth Rate & Population Density by District	10
Sarawak : Population by Administrative District 2000 & 2007	11
Sarawak : Total Population By Ethnic Group and Administrative District, 2000	12 - 13
Sarawak : Population By Age Group	14
Sarawak : Live Births, Deaths & Infant Deaths	15
Sarawak and Malaysia : Percentage Distribution of Employed Persons by Industry	16
B. SARAWAK ECONOMY	
Sarawak and Malaysia : Gross Domestic Product	17
Sarawak : Gross Domestic Product	18
Sarawak : External Sector	19
Sarawak : Inflation (2005=100)	20
Sarawak : Capital Investment in Manufacturing Projects	21
Malaysia : Approved Manufacturing Projects (ICA) by State	22

CONTENTS - (cont.)

	Page
C. AGRICULTURE	
Planted Area of Main Crops ('000 hectares)	23
Sarawak : Major Agriculture Production	24
Sarawak : Number of Livestock	25
Sarawak : Landing of Marine Fish by Gear Group	26
Sarawak : Production of Forest and Forest Products	27
D. EDUCATION, HEALTH AND TOURISM	
Sarawak : Education and Training	28
Sarawak : Health Services	29
Sarawak : Visitor Arrivals by Country of Origin	30
E. TRANSPORT	
Sarawak and Malaysia : Road by Surface Type	31
Sarawak : Total Motor Vehicles Registered as at End of Year	32
Sarawak : Aircraft Movements at Principal Airports	33
Sarawak : Arrivals and Departures of Vessels by Port	34
Sarawak : Cargo Loaded and Discharged at Principal Ports	35
F. UTILITIES AND OTHER SERVICES	
Sarawak : Consumption and Production of Water	36
Sarawak : Unit Generated and Consumption of Electricity	36
Sarawak : Principal Statistics of All Professions (Private Sector)	37
Sarawak : Principal Statistics of Selected Professions	38

CONTENTS - (cont.)

	Page
G. FINANCE	
Sarawak : Revenue and Expenditure	39
Sarawak : Import and Export Duties, Sales Tax, Excise and Service Tax	40
H. THE 9th MALAYSIA PLAN MISSIONS & STRATEGIES	
Thrusts of the National Mission	41
State Development Strategies	42

BACKGROUND INFORMATION

STATE OF SARAWAK



- **LOCATION :**
Between latitude $0^{\circ} 50'$ and $5^{\circ} N$ and longitude $109^{\circ} 36'$ and $115^{\circ} 40' E$
- **CLIMATE :**
Hot and Humid equatorial monsoon climate
- **RAINFALL :**
Mean Annual : 3,283mm
- **TEMPERATURE :**
Daily temperature range from $33^{\circ} C$ ($90^{\circ} F$) in the afternoon to $22^{\circ} C$ ($70^{\circ} F$) during the night
- **AREA :**
124,449.5 sq. km

FACTS ON SARAWAK

TOTAL AREA	: 124,449 square kilometres
LOCATION	: Between latitude 0° 50' and 5° N and longitude 109° 36' and 115° 40' E
SYSTEM OF GOVERNMENT	: Parliamentary democracy with a constitutional monarch
CAPITAL OF SARAWAK	: Kuching
MAJOR ETHNIC GROUPS	: Malay, Iban, Chinese, Bidayuh, Melanau, Orang Ulu, Indian, and other indigenous groups
MAJOR LANGUAGES	: Malay (official language), English, Mandarin, Iban, others local dialects
MAJOR RELIGIONS	: Islam (official religion), Buddhism, Christian, and Hindu
TIME	: GMT + 8 hours : US Eastern Standard Time + 13 hours
CLIMATE	: Tropical : warm and sunny throughout the year. Daily temperature range from 33° C (90° F) in the afternoon to 22° C (70° F) during the night.
CURRENCY	: Ringgit Malaysia (RM) which is divided in 100 cent.
EXCHANGE RATE	: Pegged at US\$1 = RM3.80 on 2 September 1998. : Ringgit depeg on 21 July 2005.

BASIC STATISTICS

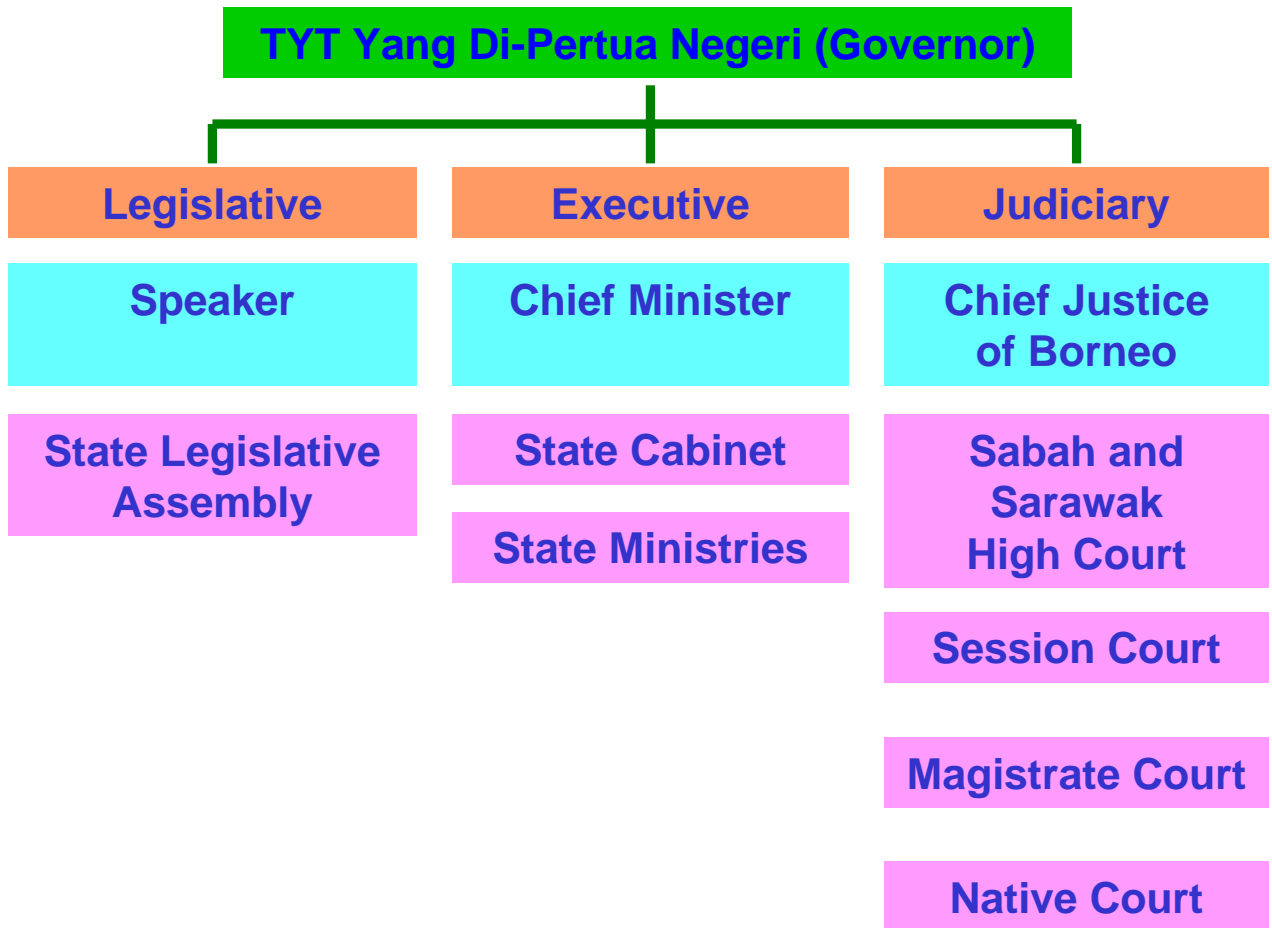
	SARAWAK		MALAYSIA	
	2006	2007e	2006	2007e
Population (Million)	2.4	2.4	26.6	27.2
Labour Force (Million)	0.9	1.0	10.6	11.8
Employment (Million)	0.9	1.0	10.3	11.4
Unemployment Rate (%)	4.3	4.0	3.3	3.5
GDP Growth at 1987 Constant Price (%)	5.5	5.8	5.9	6.0
GDP Growth Rate at Current Price (%)	17.5	10.1	10.3	8.8
Balance of Trade (RM Billion)	38.9	39.1	108.2	137.6
Exports (RM Billion)	61.2	63.1	589.0	638.5
Imports (RM Billion)	22.3	24.0	480.8	500.9

Note : (e) estimate

EXCHANGE RATES

(RM Per Unit of Foreign Currency)	2005	2006	2007 (Jan - July)
U.S. Dollar	3.8	3.7	3.5
Euro	4.7	4.6	4.6
Pound Sterling	6.9	6.8	6.8
Canadian Dollar	3.1	3.2	3.1
Australian Dollar	2.9	2.8	2.8
Singapore Dollar	2.3	2.3	2.3

THE STATE GOVERNMENT



STATE MINISTRIES

- ◆ Ministry of Planning and Resource Management
- ◆ Ministry of Finance
- ◆ Ministry of Public Utilities
- ◆ Ministry of Rural Development
- ◆ Ministry of Land Development
- ◆ Ministry of Industrial Development
- ◆ Ministry of Modernisation of Agriculture
- ◆ Ministry of Housing
- ◆ Ministry of Infrastructure Development and Communication
- ◆ Ministry of Environment and Public Health
- ◆ Ministry of Social Development and Urbanisation
- ◆ Ministry of Urban Development and Tourism

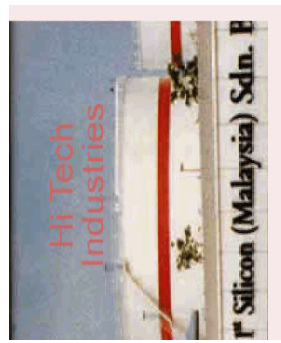
ADMINISTRATIVE DIVISIONS AND DISTRICTS

<u>DIVISION</u>	<u>DISTRICTS</u>	<u>SUBDISTRICTS</u>	<u>DIVISION</u>	<u>DISTRICTS</u>	<u>SUBDISTRICTS</u>
KUCHING	Kuching	Padawan	SIBU	Sibu	
	Bau			Kanowit	
	Lundu	Sematan		Selangau	
SAMARAHAN	Samarahan		MUKAH	Mukah	Balingian
	Asajaya			Dalat	Oya
	Serian	Tebedu		Daro	Belawai
	Simunjan	Sebuyau		Matu	Igan
SRI AMAN	Sri Aman	Lingga, Pantu	BINTULU	Bintulu	Sebauh
	Lubok Antu	Engkilili		Tatau	
BETONG	Betong	Maludam, Debak,	KAPIT	Kapit	Ng. Merit
		Spaoh, Pusa		Belaga	Sg. Asap
	Saratok	Kabong, Roban, Budu		Song	
SARIKEI	Sarikei		MIRI	Miri	Sibuti
	Meradong				Niah-Suai
	Julau		Marudi	Beluru, Long Lama	
	Pakan		LIMBANG	Limbang	Ng. Medamit
		Lawas		Sundar, Trusan	



SARAWAK: NICHE ECONOMIC ACTIVITIES

Spread out Development



KUCHING

- Gateway
- High-Tech Industry
- Finance
- Tourism
- Services



BINTULU

- Petrochemical
- Energy Intensive industry
- Plantation



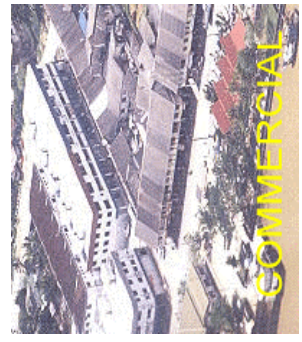
MIRI

- Tourism
- Plantation
- Manufacturing
- Commerce



SAMARAHAN

- Education
- Medical
- Agriculture
- Food Granary



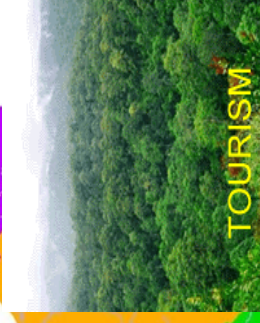
MUKAH

- Timber processing
- Sago plantation
- Tourism
- Education



LIMBANG

- Agriculture
- Tourism



SRI AMAN

- Agriculture
- Tourism

Bintulu

Mukah

Sibu

Sarikei

Betong

Sri Aman

Kapit



BETONG

- Agriculture



SARIKEI

- Agriculture
- Fishing



SIBU

- Ship building
- Tourism



KAPIT

- Logging
- Coal
- Hydro power
- Tourism

SARAWAK : LAND USE

LAND USE CLASSES	Sq. km	(%)
1. Settlement and associated non-agricultural lands	360	0.3
2. Horticultural lands (mainly miscellaneous cultivation and including small areas of fruit trees)	468	0.4
3. Tree, palm and other permanent crops	2,477	2.0
Rubber	1,448	1.2
Oil Palm	309	0.3
Coconut	434	0.4
Pepper	114	0.1
Sago	171	0.1
4. Crop land	37,076	30.1
Wet paddy	559	0.5
Shifting cultivation	36,517	29.6
5. Unused land (secondary growth)	634	0.5
6. Swamp forest	12,622	10.2
Mixed swamp forest	9,714	7.9
Alan	2,334	1.9
Padang Paya	574	0.5
7. Dry forest land	68,226	55.4
Hill forest	65,090	52.8
Kerangas forest	2,869	2.3
Riverain forest	259	0.2
Beach forest	8	0.01
8. Swamp (Paya) (including fresh and salt water and mangrove and nipah)	1,390	1.1
TOTAL	122,784	100.0

Source: Yearbook of Statistics Sarawak 2006

Planimetric Measurement of Land Use Map, Sarawak 1991 Edition 3 (Revised 1/93)

SARAWAK : NATURAL RESOURCES

1	Coastline	1,051 km
2	Land with Agriculture Potential	2.2 million ha
3	Land under Forest Cover	8.2 million ha
4	Area under Peat Soil	1.7 million ha
5	Marine Fish Production Potential	300,000 tonne per year
6	Hydropower Potential	30,000 MW
7	Surface Water	306 billion M ³
8	Minerals	Approx. reserves
	@ Petroleum	1,298 million barrels
	i) crude oil	848 million barrels
	ii) condensate	450 million barrels
	@ Gas	38 trillion S.C.F
	@ Coal	1,483 million tonne
	@ Silica Sand	56.6 million tonne
	@ Kaolin Clay	21.8 million tonne

Source : *Jabatan Mineral dan Geosains Malaysia, 2002*
Jabatan Perikanan Laut Sarawak, 2001
Petroleum Nasional Berhad, 2002
Ministry of Planning & Resource Management, 2001

KEY SUMMARY STATISTICS OF MALAYSIA POPULATION 2000

STATE	Population 2000 (' 000)	Average Growth 1991-2000 (%)	State Distribution (%)	Area (sq. km)	Population Density (per sq. km)	Dependency Ratio (%)	Sex Ratio
SARAWAK	2,071.5	2.1	8.9	124,449	17	62.8	103
Sabah	2,603.5	4.0	11.2	73,620	35	68.8	107
Pahang	1,288.4	1.9	5.5	35,965	36	63.3	110
Perak	2,051.2	0.4	8.8	21,005	98	62.4	101
Johor	2,740.6	2.6	11.8	18,986	144	55.2	107
Kelantan	1,313.0	0.9	5.6	14,920	87	86.3	100
Terengganu	898.8	1.2	3.9	12,955	69	78.9	104
Kedah	1,649.8	2.1	7.1	9,426	175	65.9	99
Selangor	4,188.9	6.1	18.0	7,955	526	49.7	105
Negeri Sembilan	859.9	1.9	3.7	6,643	129	58.1	105
Melaka	635.8	2.0	2.7	1,651	385	58.9	101
Penang	1,313.4	1.8	5.6	1,030	1,274	46.8	99
Perlis	204.5	0.8	0.9	795	257	66.1	97
F. T. of Kuala Lumpur	1,379.3	1.3	5.9	243	5,676	40.4	103
F. T. of Labuan	76.1	3.6	0.3	92	827	64.1	110
MALAYSIA	23,274.7	2.6	100.0	329,735	71	59.2	104

Source : *Population and Housing Census of Malaysia, 2000*

Note : Sex ratio - the ratio of the number of males for every 100 females.

The dependency ratio is a measure of the dependence that non-working people have on working people.

Figures presented in this table have been adjusted based on the estimates of under-enumeration derived from the Census Coverage Evaluation Survey.

SARAWAK : AREA, POPULATION, AVERAGE GROWTH RATE & POPULATION DENSITY BY DISTRICT

Division / District	Population 1991 (^{'000})	Population 2000 (^{'000})	Avg. Annual Gwth Rate (%) (1991-2000)	Area (sq. km)	Population Density (Person/Sq. km) (2000)
Kuching	369.1	494.1	3.2	1,862.8	265.3
Bau	36.0	41.8	1.7	884.4	47.3
Lundu	24.5	27.3	1.2	1,812.3	15.1
KUCHING DIVISION	429.5	563.3	3.0	4,559.5	123.5
Samarahan	33.2	47.0	3.9	407.1	115.4
Serian	71.9	79.6	1.1	2,039.9	39.0
Simunjan	35.1	37.3	0.7	2,217.6	16.8
Asajaya	24.4	28.5	1.7	302.8	94.2
SAMARAHAN DIVISION	164.6	192.4	1.7	4,967.4	38.7
Sri Aman	58.6	62.8	0.8	2,323.7	27.0
Lubok Antu	22.2	23.3	0.5	3,142.6	7.4
SRI AMAN DIVISION	80.9	86.0	0.7	5,466.3	15.7
Betong	44.0	50.4	1.5	2,493.9	20.2
Saratok	37.9	42.0	1.1	1,686.9	24.9
BETONG DIVISION	81.9	92.4	2.6	4,180.8	22.1
Sarikei	49.6	57.1	1.6	985.0	58.0
Maradong	27.0	28.9	0.8	719.0	40.3
Julau	28.1	31.7	1.3	2,628.4	12.1
SARIKEI DIVISION	104.7	117.8	1.3	4,332.4	27.2
Sibu	170.4	210.1	2.3	2,229.8	94.2
Kanowit	25.4	27.1	0.7	2,253.5	12.0
SIBU DIVISION	195.8	237.3	2.1	4,483.3	52.9
Mukah	41.8	44.8	0.8	6,331.0	7.1
Dalat	22.0	23.5	0.7	905.3	25.9
Matu	9.2	11.2	2.2	1,600.0	7.0
Daro	13.2	14.9	1.3	1,956.3	7.6
MUKAH DIVISION	86.2	94.3	5.0	10,792.6	8.7

SARAWAK : AREA, POPULATION, AVERAGE GROWTH RATE & POPULATION DENSITY BY DISTRICT

Division / District	Population 1991 ('000)	Population 2000 ('000)	Avg. Annual Gwth Rate (%) (1991-2000)	Area (sq. km)	Population Density (Person/Sq. km) (2000)
Bintulu	86.1	139.0	5.3	7,220.4	19.3
Tatau	21.1	23.2	1.1	4,945.8	4.7
BINTULU DIVISION	107.3	162.3	4.6	12,166.2	13.3
Kapit	55.6	56.7	0.2	15,595.6	3.6
Song	17.6	19.2	1.0	3,935.2	4.9
Belaga	22.3	22.9	0.3	19,403.2	1.2
KAPIT DIVISION	95.5	98.8	0.4	38,934.0	2.5
Miri	161.4	221.1	3.5	4,707.1	47.0
Marudi	72.0	71.7	0.0	22,070.0	3.2
MIRI DIVISION	233.3	292.8	2.5	26,777.1	10.9
Limbang	33.9	39.8	1.8	3,978.1	10.0
Lawas	29.3	32.7	1.2	3,811.9	8.6
LIMBANG DIVISION	63.2	72.5	1.5	7,790.0	9.3
SARAWAK	1,642.8	2,009.2	2.2	124,449.5	16.2

Source : Population and Housing Census of Malaysia, 1991 & 2000, Department of Statistics Malaysia

Note : Population figures shown have not been adjusted for under-enumeration.

SARAWAK : POPULATION BY ADMINISTRATIVE DISTRICT 2000 & 2007

Administrative District	2000			2007 e		
	Male	Female	Total	Urban	Rural	
SARAWAK	1,018,308	991,585	2,009,893	964,393	1,045,500	2,404,200
Kuching	247,537	246,572	494,109	422,240	71,869	593,000
Bau	21,499	20,325	41,824	-	41,824	48,900
Lundu	13,950	13,395	27,345	-	27,345	31,600
Samarahan	23,583	23,383	46,966	23,064	23,902	56,300
Serian	40,002	39,630	79,632	-	79,632	92,200
Simunjan	18,852	18,435	37,287	-	37,287	42,500
Asajaya	14,477	14,036	28,513	-	28,513	32,100
Sri Aman	31,244	31,531	62,775	21,243	41,532	71,200
Lubok Antu	11,584	11,671	23,255	-	23,255	23,900
Betong	25,346	25,046	50,392	-	50,392	65,000
Saratok	21,032	21,003	42,035	-	42,035	48,300
Sarikei	28,725	28,371	57,096	25,053	32,043	66,300
Maradong	14,180	14,762	28,942	-	28,942	33,100
Julau	16,185	15,538	31,723	-	31,723	38,600
Sibu	104,814	105,304	210,118	167,427	42,691	255,000
Kanowit	13,228	13,915	27,143	-	27,143	30,400
Mukah	23,054	21,783	44,837	-	44,837	52,800
Dalat	11,358	12,104	23,462	-	23,462	28,100
Matu	5,286	5,897	11,183	-	11,183	13,900
Daro	7,446	7,405	14,851	-	14,851	18,500
Bintulu	73,693	65,319	139,012	103,733	35,279	181,400
Tatau	12,225	11,016	23,241	-	23,241	28,400
Kapit	28,166	28,543	56,709	13,610	43,099	64,300
Song	9,562	9,674	19,236	-	19,236	22,600
Belaga	12,778	10,118	22,896	-	22,896	28,700
Miri	113,715	107,340	221,055	169,005	52,050	268,000
Marudi	37,333	34,380	71,713	-	71,713	83,900
Limbang	20,400	19,417	39,817	19,018	20,799	46,300
Lawas	17,054	15,672	32,726	-	32,726	38,900

Source : *Population and Housing Census of Malaysia 2000*

Monthly Statistical Bulletin Sarawak, January 2007

Note : Figures presented in this table have not been adjusted for under-enumeration.

(e) estimate

**SARAWAK : TOTAL POPULATION BY ETHNIC GROUP AND
ADMINISTRATIVE DISTRICT, 2000**

Administrative District	Total	Iban	Chinese	Malay	Bidayuh
Kuching	509,374	47,597	197,955	180,957	63,943
Bau	43,190	648	9,205	3,583	29,215
Lundu	28,070	3,750	3,539	9,328	10,717
Samarahan	48,068	7,516	8,682	27,190	3,138
Serian	82,042	12,147	10,204	9,519	49,117
Simunjan	38,098	16,673	1,475	19,342	307
Asajaya	29,012	2,421	2,532	23,720	119
Sri Aman	64,475	37,337	8,262	17,748	453
Lubok Antu	23,966	20,729	2,262	694	73
Betong	51,426	18,764	2,321	29,919	162
Saratok	43,035	22,103	2,892	17,641	67
Sarikei	59,043	16,934	22,640	8,115	203
Maradong	29,917	12,606	11,052	4,383	134
Julau	32,668	31,034	1,070	256	80
Sibu	218,106	53,104	119,550	20,664	1,505
Kanowit	27,982	23,168	3,408	859	57
Mukah	46,182	24,637	3,416	1,326	157
Dalat	24,152	8,129	1,486	407	28
Matu	11,498	676	468	544	7
Daro	15,268	869	490	749	12
Bintulu	143,429	56,424	28,995	13,981	1,923
Tatau	23,943	15,154	1,572	991	123
Kapit	58,430	47,900	4,679	1,657	274
Song	19,806	17,865	933	731	69
Belaga	23,611	2,820	1,352	1,027	105
Miri	228,231	65,102	70,993	41,559	3,692
Marudi	73,922	25,547	6,190	4,325	637
Limbang	40,959	11,154	6,338	10,122	271
Lawas	33,603	927	3,269	10,933	168
Total	2,071,506	603,735	537,230	462,270	166,756

**SARAWAK : TOTAL POPULATION BY ETHNIC GROUP AND
ADMINISTRATIVE DISTRICT, 2000 (CONT'D)**

Administrative District	Melanau	Other Bumiputera	Others	Non Malaysian Citizens
Kuching	3,608	3,301	3,434	8,579
Bau	64	146	87	242
Lundu	86	69	49	532
Samarahan	506	601	225	210
Serian	149	180	115	611
Simunjan	72	52	132	45
Asajaya	61	86	7	66
Sri Aman	247	111	30	287
Lubok Antu	15	40	5	148
Betong	76	66	11	107
Saratok	134	59	43	96
Sarikei	9,501	111	29	1,510
Maradong	1,572	86	20	64
Julau	116	85	6	21
Sibu	14,514	1,131	248	7,390
Kanowit	355	96	9	30
Mukah	15,665	267	78	636
Dalat	13,946	72	6	78
Matu	9,732	37	3	31
Daro	13,096	31	3	18
Bintulu	16,614	7,025	660	17,807
Tatau	1,397	2,450	63	2,193
Kapit	961	1,848	42	1,069
Song	85	103	9	11
Belaga	215	17,072	56	964
Miri	9,447	20,568	1,840	15,030
Marudi	430	34,016	322	2,455
Limbang	195	11,869	147	863
Lawas	125	16,112	424	1,645
Total	112,984	117,690	8,103	62,738

Source : Yearbook of Statistics Sarawak 2006

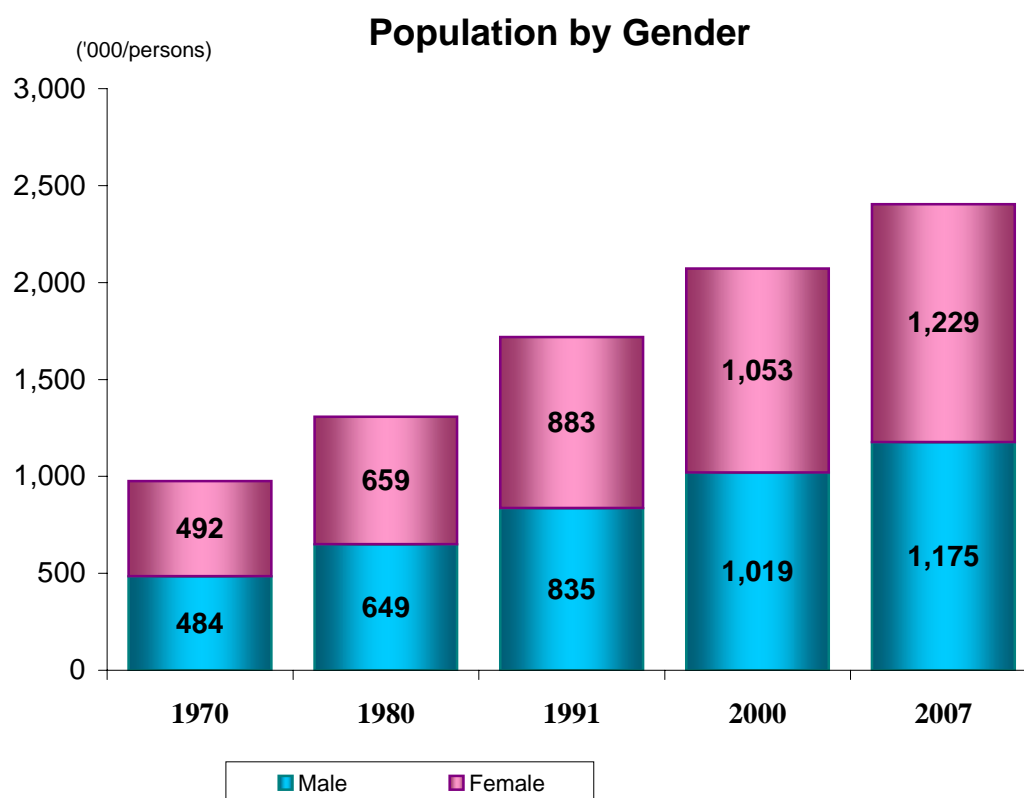
Note : Figures in this table have been adjusted based on the estimates of under-enumeration derived from the Census Coverage Evaluation Survey.

SARAWAK : POPULATION BY AGE GROUP

Age Group	1991	2000	2007 e
	('000)	('000)	('000)
0 - 4	223.3	265.6	281.1
5 - 9	210.1	231.5	274.2
10 - 14	192.1	213.0	243.4
15 - 19	180.3	196.9	217.1
20 - 24	166.6	176.7	202.3
25 - 29	156.4	173.0	187.8
30 - 34	129.6	164.2	173.6
35 - 39	110.4	147.9	166.1
40 - 44	82.2	127.1	155.1
45 - 49	68.3	102.7	133.0
50 - 54	52.2	79.9	109.6
55 - 59	43.3	59.5	85.1
60 - 64	36.1	44.7	62.1
65 - 69	25.4	34.6	44.7
70+	41.9	54.2	68.9
Total	1,718.4	2,071.5	2,404.2

Source : Yearbook of Statistics Sarawak 2006
 Monthly Statistical Bulletin Sarawak, January 2007

Note : (e) Mid-year estimate.



SARAWAK : LIVE BIRTHS AND CRUDE BIRTH RATE

Ethnic Group	2003		2004		2005 p	
	Number	Crude Rate	Number	Crude Rate	Number	Crude Rate
Total	43,936	19.8	42,972	19.0	44,404	19.2
Malay	11,006	22.2	10,693	21.1	11,049	21.4
Iban	12,340	19.1	12,381	18.8	12,794	19.1
Bidayuh	3,545	19.9	3,503	19.3	3,620	19.5
Melanau	2,768	22.8	2,684	21.6	2,773	21.8
Other Bumiputera	2,941	23.3	2,873	22.3	2,969	22.6
Chinese	10,011	17.6	9,550	16.5	9,868	16.7
Others *	1,325	16.3	1,288	15.0	1,331	14.5

SARAWAK : DEATHS AND CRUDE DEATH RATE

Ethnic Group	2003		2004		2005 p	
	Number	Crude Rate	Number	Crude Rate	Number	Crude Rate
Total	9,171	4.1	9,353	4.1	9,158	4.0
Malay	1,906	3.8	1,964	3.9	1,625	3.2
Iban	2,480	3.8	2,651	4.0	2,788	4.2
Bidayuh	572	3.2	672	3.7	695	3.7
Melanau	550	4.5	538	4.3	589	4.6
Other Bumiputera	1,074	8.5	935	7.3	1,008	7.7
Chinese	2,327	4.1	2,401	4.1	2,298	3.9
Others *	262	3.2	192	2.2	155	1.7

SARAWAK : INFANT DEATHS AND INFANT MORTALITY RATE

Ethnic Group	2003		2004		2005 p	
	Number	Crude Rate	Number	Crude Rate	Number	Crude Rate
Total	243	5.5	231	5.4	249	5.6
Malay	89	8.1	65	6.1	72	6.5
Iban	64	5.2	57	4.6	73	5.7
Bidayuh	15	4.2	30	8.6	18	5.0
Melanau	19	6.9	14	5.2	13	4.7
Other Bumiputera	10	3.4	5	1.7	13	4.4
Chinese	43	4.3	56	5.9	57	5.8
Others *	3	2.3	4	3.1	3	2.3

Source : Yearbook of Statistics Sarawak 2006

Note : * Includes non-Malaysian citizens

(p) preliminary

SARAWAK AND MALAYSIA : PERCENTAGE DISTRIBUTION OF EMPLOYED PERSONS BY INDUSTRY

Sector	2004		2005		2006e (4Q)	
	(%)		(%)		(%)	
	M'sia	S'wak	M'sia	S'wak	M'sia	S'wak
Agriculture, Forestry, Livestock and Fishing	14.6	30.5	14.6	30.4	15.2	31.0
Mining & Quarrying	0.3	0.9	0.4	0.7	0.4	1.1
Manufacturing	20.3	12.3	19.8	11.8	19.7	10.7
Construction	8.9	9.4	9.0	9.2	9.3	10.5
Electricity, Gas and Water	0.6	0.4	0.6	0.5	0.8	1.2
Wholesale and Retail Trade, Restaurants and Hotels	23.1	19.3	22.8	19.0	22.7	19.1
Transport, Storage and Communication	5.3	4.5	5.4	4.3	5.1	4.2
Financing, Insurance, Real Estate and Business Services	7.0	4.3	7.0	5.0	7.6	4.7
Community, Social, Personal Services and Other Services	19.9	18.4	20.4	19.1	19.3	17.6
Total	100.0	100.0	100.0	100.0	100.0	100.0
Total Employed Persons	9,979,500	919,120	10,045,400	910,900	10,408,000	944,500
Total Labour Force	10,346,200	955,640	10,413,400	950,300	10,727,000	980,800

Source : Malaysia Labour Force Survey Report
Yearbook of Statistics Sarawak 2006

Note : (e) estimate

SARAWAK ECONOMY

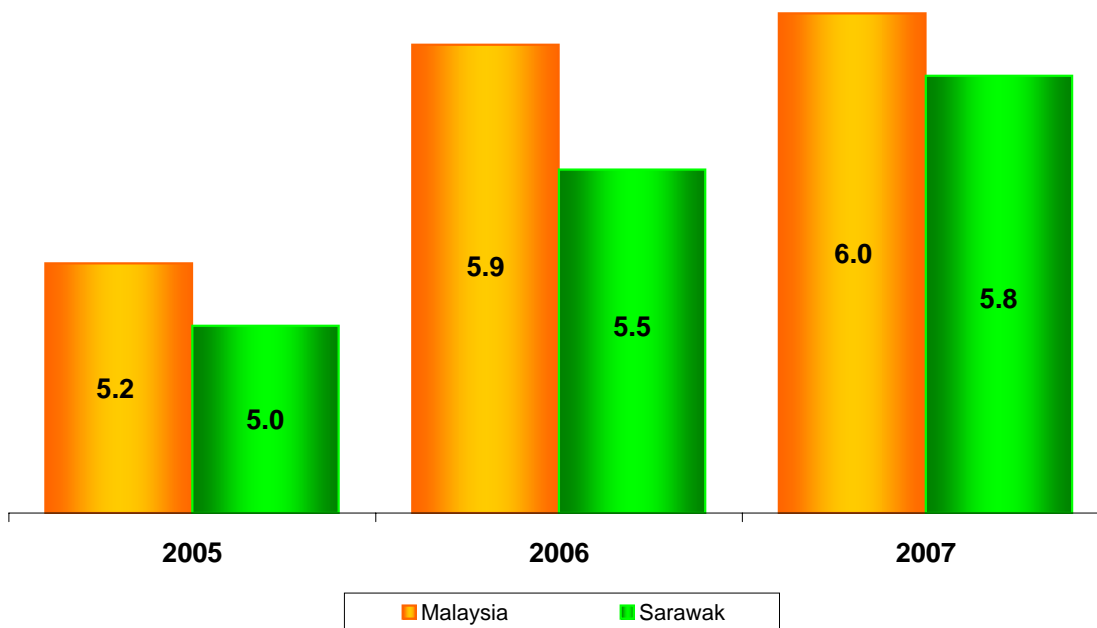
SARAWAK AND MALAYSIA : GROSS DOMESTIC PRODUCT

	2005	2006	2007 f
GDP IN CONSTANT 1987 PRICES (RM MILLION)			
Malaysia	262,175	277,673	293,990
Sarawak	22,038	23,243	24,603
ANNUAL GROWTH RATE (%) (at 1987 Constant Prices)			
Malaysia	5.2	5.9	6.0
Sarawak	5.0	5.5	5.8
GDP IN CURRENT PRICES (RM MILLION)			
Malaysia	495,239	546,343	596,843
Sarawak	51,840	60,935	67,089
ANNUAL GROWTH RATE (%) (at Current Prices)			
Malaysia	10.0	10.3	8.8
Sarawak	18.4	17.5	10.1

Source : Yearbook of Statistics Sarawak / Malaysia Various Issues

Note : (f) forecast

Real GDP : % yoy Change



SARAWAK : GROSS DOMESTIC PRODUCT

Sector	2005		2006 e		2007 f	
	RM Mil	% Chg	RM Mil	% Chg	RM Mil	% Chg
REAL GDP (at constant 1987 prices)						
Agriculture, Livestock & Fishery	2,301	6.7	2,506	8.9	2,734	9.1
Forestry	918	-8.9	914	-0.4	911	-0.3
Mining & Quarrying	5,924	4.1	6,180	4.3	6,446	4.3
Manufacturing	5,508	9.1	5,781	5.0	6,119	5.8
Construction	665	2.5	706	6.2	751	6.4
Services	6,723	4.4	7,157	6.5	7,642	6.8
GDP at purchasers' value	22,038	5.0	23,243	5.5	24,603	5.8
GDP / CAPITA	9,530		9,864		10,246	
NOMINAL GDP (at Current prices)						
Government Final Consumption	4,249	10.1	4,574	7.6	4,839	5.8
Private Final Consumption	10,048	5.8	10,671	6.2	11,343	6.3
Change in Stocks	-223	-	-487	-	-529	-
Gross Fixed Capital Formation	4,499	13.1	4,899	8.9	5,213	6.4
Exports of Goods & Services	55,595	15.4	64,114	15.3	70,959	10.7
Less : Imports of Goods & Services	22,328	12.1	22,837	2.3	24,737	8.3
GDP at purchasers' value	51,840	18.4	60,935	17.5	67,089	10.1
GDP / CAPITA	22,416		25,858		27,939	

Note : (e) estimate (f) forecast

SARAWAK : EXTERNAL SECTOR

Commodity Section	2005 p	2006 p	2007 p (Jan - July)
EXPORTS	51,464.2	61,939.0	37,611.3
IMPORTS	22,208.3	22,422.8	13,855.8
TRADE BALANCE	29,255.9	39,516.2	23,755.5
Exports by Commodity Section (RM Million)			
Total	51,464.2	61,939.0	37,611.3
Food	492.4	480.0	301.2
Beverages and Tobacco	76.7	79.7	56.0
Crude Materials, Inedible	3,441.7	3,614.5	1,989.0
Mineral Fuels, Lubricants etc	36,814.2	44,924.8	27,380.3
Animal and Vegetable Oils and Fats	2,085.0	2,566.9	1,926.1
Chemicals	926.6	1,086.5	669.1
Manufactured Goods	5,053.7	6,297.5	3,516.8
Machinery & Transport Equipment	2,370.1	2,682.1	1,674.7
Miscellaneous Manufactured Articles	164.5	169.8	78.6
Other Miscellaneous	39.3	37.2	19.5
Imports by Commodity Section (RM Million)			
Total	22,208.3	22,422.8	13,855.8
Food	1,880.0	2,036.4	1,261.6
Beverages and Tobacco	273.6	266.7	156.6
Crude Materials, Inedible	331.1	350.1	173.9
Mineral Fuels, Lubricants, etc	3,529.1	4,228.9	1,968.7
Animal and Vegetable Oils & Fats	136.6	84.1	31.0
Chemicals	2,442.1	2,798.1	2,096.7
Manufactured Goods	3,270.3	3,312.7	2,251.6
Machinery and Transport Equipment	8,549.1	7,529.3	4,928.8
Miscellaneous Manufactured Articles	1,532.7	1,532.6	805.7
Other Miscellaneous	263.7	283.9	181.2

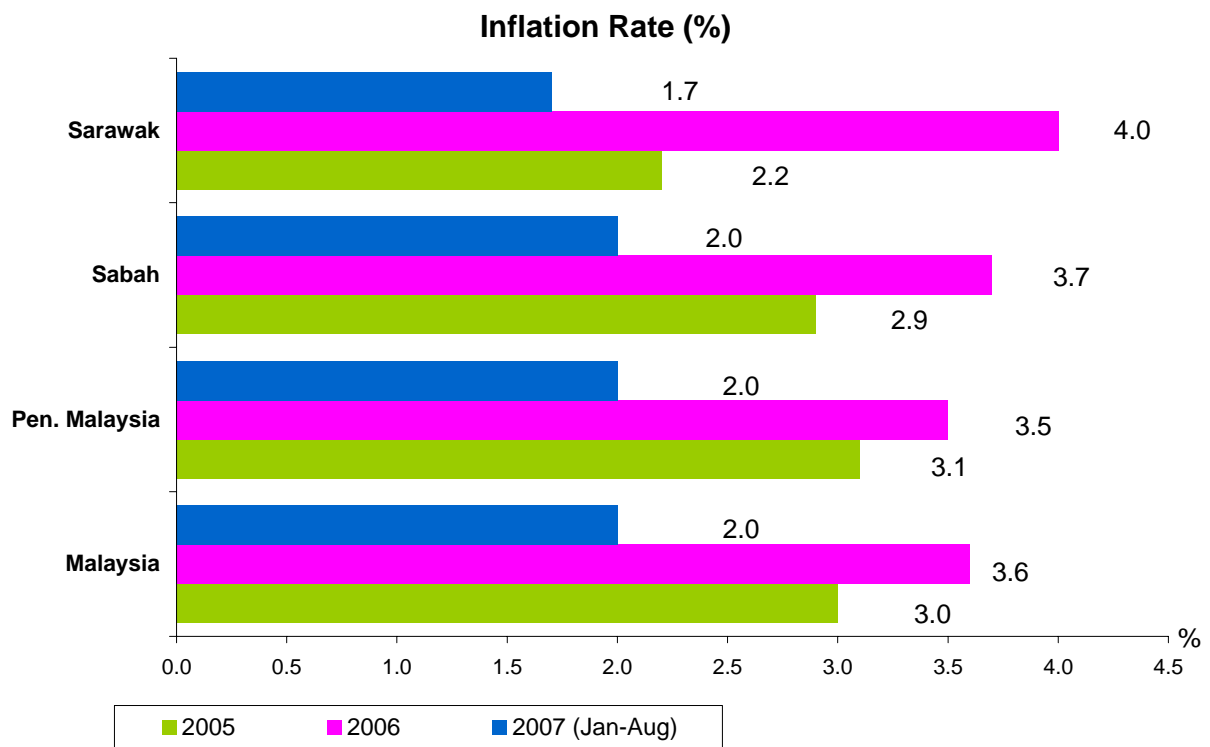
Source : Yearbook of Statistics Sarawak, Various Issues

Note : (p) preliminary

INFLATION (2005=100)

Commodity Section	2005	2006	2007 (Jan - Aug)
INFLATION	2.2	4.0	1.7
Food & Non-Alcoholic Beverages	2.5	3.4	2.5
Alcoholic Beverages & Tobacco	11.5	5.5	5.7
Clothing & Footwear	-0.6	-0.5	-0.4
Housing, Water, Electricity, Gas & Other Fuels	1.1	1.3	0.9
Furnishings, Household Equipment & Routine Household Maintenance	0.6	0.5	0.9
Health	1.0	1.0	0.9
Transport	4.8	12.6	2.3
Communication	0.0	-1.2	-1.4
Recreation Services & Culture	-2.0	0.5	0.0
Education	0.5	0.9	1.8
Restaurants & Hotels	4.5	3.9	2.9
Miscellaneous Goods & Services	1.5	2.3	0.5
Durable Goods	0.7	-0.9	-1.9
Semi-Durable Goods	0.1	-0.4	-0.3
Non-Durable Goods	4.1	7.5	2.6
Services	1.3	2.0	1.7

Source : Malaysia Consumer Price Index, June 2007



SARAWAK : CAPITAL INVESTMENT IN MANUFACTURING PROJECTS

Manufacturing Projects (RM Million)	2004	2005	2006
DOMESTIC	4,303	1,253	2,101
FOREIGN	9,602	242	517
TOTAL	13,905	1,495	2,618

Approved Capital Investment (RM Million)

Sarawak	2004	2005	2006
Food	541	206	401
Beverages	4	14	9
Wood Based & Rattan Products	4,490	558	564
Printing, Publishing & Allied Industries	270	6	436
Basic Metal Product	8,215	62	27
Chemical & Chemical Products	102	296	599
Petroleum & Other Related Products	0	2	0
Non Metallic Mineral Products	123	72	94
Electrical Machinery, Appliances & Supplies	1	6	418
Transport Equipment	143	227	50
Textiles & Garments	0	2	0
Rubber Products	0	0	3
Miscellaneous Manufacturing Industry	16	43	17
Total Capital Investment	13,905	1,495	2,618

Source : Ministry of Industrial Development
 Note : Including projects supported under ICA

MALAYSIA : APPROVED MANUFACTURING PROJECTS (ICA) BY STATE

State	2005		2006		2007 (Jan - June)	
	Number	Total Capital Investment (RM Million)	Number	Total Capital Investment (RM Million)	Number	Total Capital Investment (RM Million)
Selangor	337	8,502	311	5,254	157	4,219
Johor	234	8,108	221	7,638	96	5,908
Penang	148	4,625	156	5,351	71	2,229
Pahang	18	2,203	33	1,793	12	419
Kedah	44	1,763	59	9,880	24	11,460
Perak	51	1,377	62	1,181	28	415
Sabah	41	1,205	75	5,069	22	607
Melaka	52	1,039	55	1,401	14	76
Sarawak	35	1,226	31	858	9	279
Negeri Sembilan	25	338	37	1,800	19	1,535
Terengganu	8	328	7	2,934	5	1,571
F. T. of Kuala Lumpur	20	150	18	504	6	64
Kelantan	8	125	6	47	5	17
Perlis	2	31	3	61	1	0
F. T. of Labuan	2	20	3	2,223	-	-
Undecided	2	17	-	-	-	-
Total	1,027	31,057	1,077	45,993	469	28,800

Source : Malaysian Industrial Development Authority

AGRICULTURE

PLANTED AREA OF MAIN CROPS ('000 HECTARES)

MALAYSIA	2004	2005	2006
Oil Palm	3,875.3	4,051.3	4,165.2
Cocoa	41.6	33.4	33.0
Rubber	1,275.0	1,237.0	1,200.0
Paddy (Wet & Dry/Hill)	680.7	676.2	-
SARAWAK	2004	2005	2006
Oil Palm	508.3	543.4	591.5
Cocoa	5.0	4.9	4.9
Rubber	156.7	156.8	157.1
Paddy (Wet & Dry/Hill)	126.4	127.2	127.5
Pepper	12.9	12.7	12.7
SABAH	2004	2005 p	2006
Oil Palm	1,133.4	1,228.4	1,240.0
Cocoa	21.0	16.8	20.8 e
Rubber	64.6	66.4	na
Paddy (Wet & Dry/Hill)	40.8	39.6	na

Source : Yearbook of Statistics, Various Issues

Note : (p) preliminary (e) estimate (na) not available

SARAWAK : MAJOR AGRICULTURE PRODUCTION

Commodity	2004	2005	2006 e	2007 e
Crude Palm Oil ('000 tonnes)	1,116.5	1,336.6	1,503.1	1,857.4
Dry Cocoa Beans ** ('000 tonnes)	2.3	2.4	1.9	2.0
Rubber * ('000 tonnes)	36.9	64.6	100.4	na
Pepper (White & Black) * ('000 tonnes)	20.0	18.5	19.0	19.0

Source : *Yearbook of Statistics Sarawak, Various Issues*

*Malaysian Cocoa Board ***

Note : * Refer to export figures

(e) estimate (na) not available

SARAWAK : NUMBER OF LIVESTOCK

Selected Livestock	2004	2005 p	2006 e
Cattle			
Population	12,040	12,375	13,785
Recorded Slaughter	1,107	736	589
Buffaloes			
Population	11,437	9,237	13,091
Recorded Slaughter	127	124	149
Goats			
Population	9,504	9,960	10,983
Recorded Slaughter	247	259	227
Sheep			
Population	4,147	4,134	4,400
Recorded Slaughter	6	48	na
Swine			
Population	544,033	386,705	658,281
Recorded Slaughter	205,921	232,764	217,962

Source : *Yearbook of Statistics Sarawak 2006*

Note : (p) preliminary (e) estimate (na) not available

SARAWAK : LANDING OF MARINE FISH BY GEAR GROUP

Gear Group (Tonne)	2004	2005	2006 p
Trawl Nets	138,095	116,737	99,876
Drift/Gill Nets	32,799	25,927	25,332
Bag Nets	3,133	3,578	2,107
Push/Scoop Lift Nets	672	607	456
Hooks and Lines	2,907	2,520	3,665
Others	8,513	9,308	9,089
TOTAL	186,119	158,677	140,525

Source : *Monthly Statistical Bulletin Sarawak, July 2007*

Note : (p) preliminary

SARAWAK : PRODUCTION OF FOREST AND FOREST PRODUCTS

Particulars	2005	2006 p	2007 e
Saw Logs ('000 m ³)	12,036	10,949	11,500
Sawn Timber ('000 m ³)	1,197	1,057	1,200
Plywood ('000 m ³)	3,171	3,400	3,400
Laminated Boards ('000 m ³)	60	47	45
Mouldings / Dowels ('000 m ³)	19	16	16
Woodchips ('000 m ³)	137	na	na
Veneer ('000 m ³)	267	300	300
Poles ('000)	3,470	4,729	4,810
Cordwood ('000 tonne)	92	78	80
Charcoal (tonne)	279	61	na

Source : Yearbook of Statistics Sarawak, Various Issues

Note : (p) preliminary (e) estimate (na) not available

**EDUCATION,
HEALTH AND
TOURISM**

SARAWAK : EDUCATION AND TRAINING

Particulars	2003	2004	2005
TOTAL NUMBER OF STUDENTS	485,014	493,490	498,417
Primary School Enrolment	289,530	294,149	288,581
Secondary School Enrolment	191,076	195,159	206,092
Vocational School Enrolment *	4,408	4,182	3,744
TOTAL NUMBER OF TEACHERS	28,731	29,797	30,614
Teachers in Primary School	17,852	18,487	18,968
Teachers in Secondary School	10,329	10,738	11,054
Teachers in Vocational School *	550	572	592
TOTAL NUMBER OF SCHOOLS	1,439	1,448	1,456
Primary Schools	1,264	1,266	1,267
Secondary Schools	168	175	182
Technical Secondary School	7	7	7

Source : Yearbook of Statistics Sarawak, Various Issues

Note : * refer to Technical Secondary Schools

SARAWAK : HEALTH SERVICES

Health Services	2003	2004	2005
Hospital*	21	22	22
Health Clinic, Rural Clinic, Maternal & Child Health Clinic, Mobile Clinic & Dental Clinic	537	543	548
No of Beds	4,625	4,760	4,774
Doctors	772	930	1,005
Nurses	1,991	2,052	2,200
Dentists	138	137	154

Source : Yearbook of Statistics Sarawak 2006

State Health Department Sarawak

Note : * Including Sentosa Hospital & Rajah Charles Brooke Memorial Hospital

SARAWAK : VISITOR ARRIVALS BY COUNTRY OF ORIGIN

Country	2005	2006	2007 (Jan - May)	
			Number	% Share
Brunei	1,354,148	1,088,331	532,390	27.5
Singapore	42,912	35,761	13,971	0.7
Thailand	17,994	13,365	6,791	0.4
Indonesia	449,327	330,007	151,951	7.8
Philippines	101,521	70,785	32,466	1.7
Japan	9,781	10,437	3,283	0.2
Taiwan	7,472	6,920	2,193	0.1
Hong Kong	593	924	156	0.0
China	18,729	19,608	8,616	0.4
India	12,426	12,896	6,618	0.3
United Kingdom & Ireland	42,136	35,865	13,945	0.7
Eastern & Western Europe	25,221	26,180	11,782	0.6
USA	11,207	9,056	4,549	0.2
Canada	9,062	7,456	3,415	0.2
Australia & New Zealand	28,066	23,566	9,781	0.5
Others	198,704	141,859	66,097	3.4
Malaysian	2,248,829	2,219,163	1,070,274	55.2
Total	4,578,128	4,052,179	1,938,278	100.0

Source : Monthly Statistical Bulletin Sarawak, July 2007

TRANSPORT

SARAWAK AND MALAYSIA : ROAD BY SURFACE TYPE

Type	2003		2004		2005	
	Km.	Share (%)	Km.	Share (%)	Km.	Share (%)
MALAYSIA (329,961 Sq. Km)						
Paved	59,513	77.1	59,254	76.3	67,851	78.0
Gravel	13,782	17.9	15,138	19.5	15,989	18.4
Earth	3,905	5.1	3,303	4.3	3,185	3.7
Total	77,200	100.0	77,695	100.0	87,025	100.0
SARAWAK (124,449 Sq. Km)						
Paved	7,760	73.8	8,312	73.1	8,880	78.0
Gravel	2,312	22.0	2,631	23.1	2,124	18.7
Earth	443	4.2	425	3.7	383	3.4
Total	10,515	100.0	11,368	100.0	11,387	100.0

Source : Yearbook of Statistics Malaysia 2006
Yearbook of Statistics Sarawak 2006

SARAWAK : TOTAL MOTOR VEHICLES REGISTERED AS AT END OF YEAR

Type	2004	2005	2006
Motor Cars	342,978	383,184	409,517
Motorcycles	403,020	426,705	452,402
Taxi, Hire and Drive Cars	5,062	5,555	5,828
Buses	2,490	2,566	2,600
Goods Vehicles	46,023	49,513	52,805
Others	89,429	98,376	106,375
Total	889,002	965,899	1,029,527

Source : Yearbook of Statistics Sarawak 2006
Monthly Statistical Bulletin Sarawak, Januari 2007

SARAWAK : AIRCRAFT MOVEMENTS AT PRINCIPAL AIRPORTS

Airports	2005	2006 p	2007 p (Jan - June)
Kuching	43,702	40,286	18,653
Sibu	15,831	15,163	5,741
Miri	42,860	41,698	17,132
Bintulu	13,651	10,990	3,154
Total	116,044	108,137	44,680

Source : Yearbook of Statistics Sarawak 2006
Monthly Statistical Bulletin Sarawak, July 2007

Note : (p) preliminary

SARAWAK : ARRIVALS AND DEPARTURES OF VESSELS BY PORT

Ports	2005		2006		2007 (Jan - May)	
	Arrivals	Departures	Arrivals	Departures	Arrivals	Departures
Kuching						
Number	4,265	4,265	4,208	4,208	1,567	1,567
'000 N.R.T.	4,577	4,577	4,825	4,825	1,841	1,841
Rajang						
Number	2,867	2,867	3,111	3,112	1,267	1,267
'000 N.R.T.	4,646	4,646	4,644	4,646	1,763	1,764
Bintulu						
Number	4,890	4,890	4,881	4,881	1,850	1,850
'000 N.R.T.	23,135	23,135	23,013	23,014	9,836	9,836
Miri						
Number	1,388	1,388	1,401	1,401	477	477
'000 N.R.T.	3,328	3,328	3,563	3,563	1,510	1,510
Others						
Number	1,022	1,021	910	909	324	325
'000 N.R.T.	306	306	282	284	92	92
Total						
Number	14,432	14,431	14,511	14,511	5,485	5,486
'000 N.R.T.	35,992	35,992	36,327	36,332	15,042	15,043

Source : Yearbook of Statistics Sarawak 2006

Monthly Statistical Bulletin Sarawak, July 2007

Note : (N.R.T.) Net Registered Tonnes

SARAWAK : CARGO LOADED AND DISCHARGED AT PRINCIPAL PORTS

Port Authority	2005	2006	2007 (Jan - May)
LOADED ('000 freight tonnes)	43,080	42,795	13,809
Kuching	2,000	1,986	962
Rajang	3,377	3,467	1,409
Bintulu	33,124	32,032	9,047
Miri	4,579	5,310	2,391
DISCHARGED ('000 freight tonnes)	10,576	10,672	4,243
Kuching	5,491	5,218	2,227
Rajang	1,347	1,353	624
Bintulu	3,280	3,734	1,213
Miri	458	367	179
Total Activity at Ports	53,656	53,467	18,052

*Source : Yearbook of Statistics Sarawak 2006
Monthly Statistical Bulletin Sarawak, July 2007*

UTILITIES AND OTHER SERVICES

SARAWAK : CONSUMPTION AND PRODUCTION OF WATER

Particulars	2005	2006 p	2007 p (Jan - April)
Production ('000 Cu. Metres)	275,733	296,444	102,492
Consumption ('000 Cu. Metres)	201,048	210,864	72,502

SARAWAK : UNIT GENERATED AND CONSUMPTION OF ELECTRICITY

Particulars	2005	2006 p	2007 p (Jan - May)
Unit Generated (million KWH)	5,707.8	5,967.7	2,546.7
Consumption (million KWH)	5,093.6	5,175.7	2,204.2
Installed Capacity (MW)	1,194.5	1,253.2	547.8 e

Source : *Yearbook of Statistics Sarawak, Various Issues*
Monthly Statistical Bulletin Sarawak, July 2007

Note : (p) preliminary (e) estimate

SARAWAK : PRINCIPAL STATISTICS OF ALL PROFESSIONS* (PRIVATE SECTOR)

PROFESSIONS	1999	2002	2003
No. of Establishments	853	912	970
Revenue (RM '000)	426,866	497,074	562,886
Expenditure (RM '000)	306,307	384,496	433,806
Salaries and wages paid (RM '000)	122,739	158,039	181,928
Value of fixed assets owned (RM '000)	79,250	110,158	111,566

Source : *Yearbook of Statistics Sarawak 2006*

Note : * Include engineers, accountants, architects, building draughtsman, dentists, lawyers, doctors, surveyors and veterinary surgeons.

Census / Survey was not conducted for the years 2000, 2001 and 2004.

SARAWAK : PRINCIPAL STATISTICS OF SELECTED PROFESSIONS

PROFESSIONS	2002	2003	2004
<i>Real Estates</i>			
No. of Establishments	11	13	13
Revenue (RM '000)	1,026	1,230	1,399
Expenditure (RM '000)	638	779	883
Salaries and wages paid (RM '000)	199	234	281
Value of fixed assets owned (RM '000)	1,392	1,344	1,673
<i>Tourists and Travel Agencies</i>			
No. of Establishments	107	104	104
Revenue (RM '000)	112,166	93,285	118,562
Expenditure (RM '000)	110,312	90,503	113,158
Salaries and wages paid (RM '000)	15,620	16,048	17,391
Value of fixed assets owned (RM '000)	15,890	14,829	17,027
<i>Hotels and Lodgings</i>			
No. of Establishments	285	287	281
Revenue (RM '000)	278,100	307,460	319,654
Expenditure (RM '000)	287,379	303,841	304,129
Salaries and wages paid (RM '000)	66,089	68,054	73,259
Value of fixed assets owned (RM '000)	1,322,734	1,300,130	1,288,129

Source : Yearbook of Statistics Sarawak 2006

FINANCE

SARAWAK : REVENUE AND EXPENDITURE

Revenue / Expenditure (RM Million)	2003	2004	2005 p
State			
Revenue	2,651	2,929	3,220
Operating Expenditure	2,483	2,499	2,076
Development Revenue	1,651	1,505	1,320
Development Expenditure	1,630	1,299	1,448
Federal			
Revenue	2,776	3,080	3,406
Operating Expenditure	3,193	3,376	3,470
Development Expenditure	1,852	1,265	872

Source : Yearbook of Statistics Sarawak 2006

Note : (p) preliminary

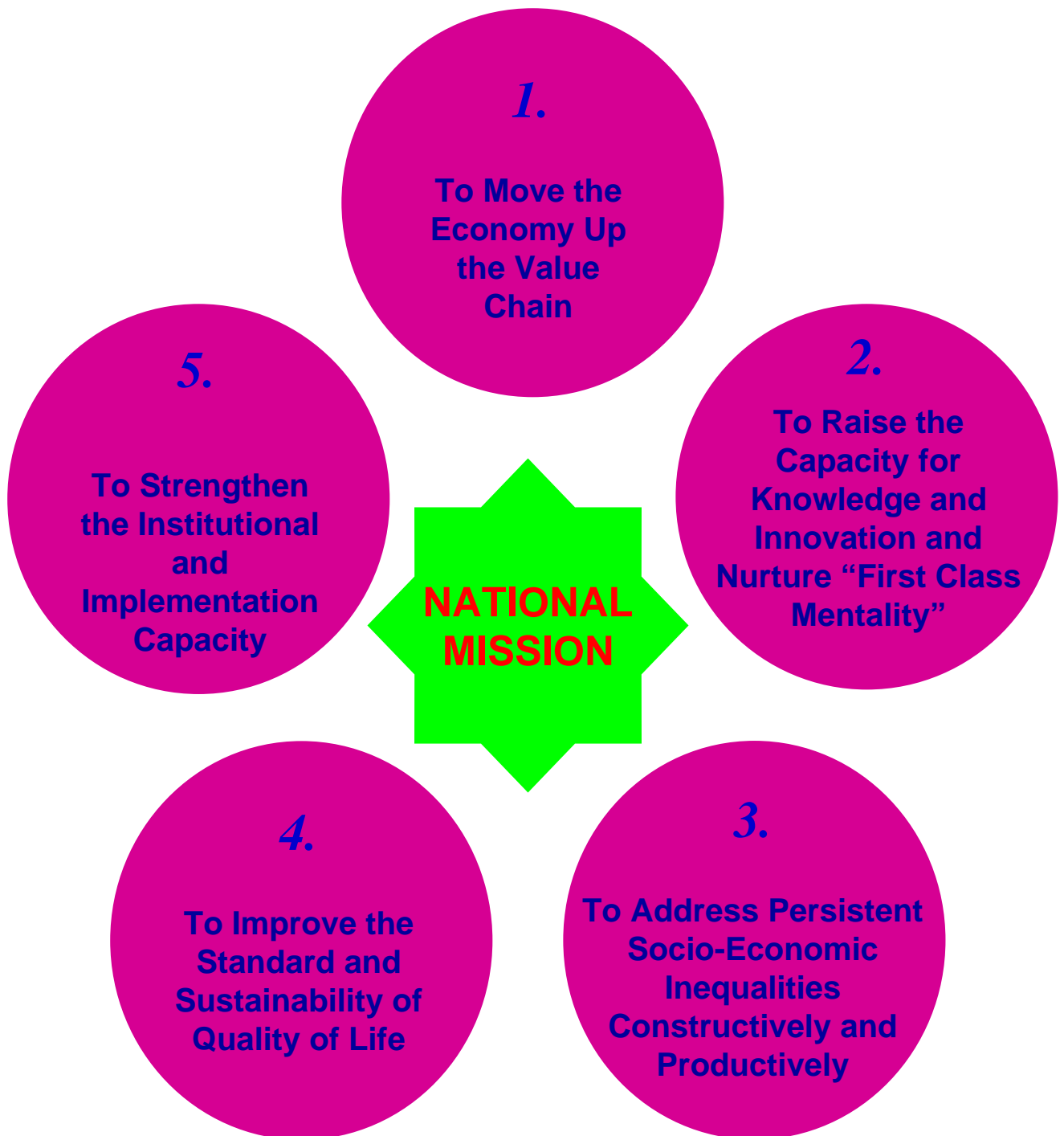
**SARAWAK : IMPORT AND EXPORT DUTIES, SALES TAX,
EXCISE AND SERVICE TAX**

Items (RM'000)	2004	2005	2006 (Jan - June)
State			
Import Duties	-	-	-
Export Duties	31	148	9
Excise	-	-	-
Federal			
Import Duties	118,043	88,246	34,612
Export Duties	395,141	528,682	426,858
Sales Tax	146,392	154,374	61,494
Excise	65,789	100,508	41,521
Service Tax	50,455	56,922	35,985

Source : Yearbook of Statistics Sarawak 2006

**THE 9th MALAYSIA
PLAN MISSIONS &
STRATEGIES**

THRUSTS OF THE NATIONAL MISSION



STATE DEVELOPMENT STRATEGIES TO SUPPORT THE NATIONAL THRUSTS

Developing Human Capital and R&D Capability

1

To raise the standard for our human capital and our Research and Development (R&D) capability. Human capital is a vital and most important asset, both for the Nation as well as for the State. We must therefore intensify our efforts in raising the individual capabilities for our people so that they can become knowledge and skilled workers who can work locally as well as anywhere in the world.

Speeding Up Growth in Rural Areas

2

The vastness of the rural areas of the State, where the future potential of the Sarawak economy lies, represents great opportunities available for us to develop the State. The rural areas are naturally our development focus to quickly spread the benefits of development to our people as well as to bring about renewed growth in traditional sectors. We must speed up the growth of the rural areas through specific development plans and programmes.

Capitalising on Energy Resources

3

To actively engage the private sector in the wider fields of economic activities. With our focus in developing our human capital and R&D capability, it is logical that the private sector initiative would be required to be more involved in the State economy.

Engaging the Private Sector

4

As a land with an exceptional variety of terrain and natural resources, we need also to learn to capitalize on the energy resources in the State so as to generate energy-based industries and make the State the powerhouse of the region.

Enhancing the Quality of Life

5

All our efforts in bringing development to the State have the purpose of raising the quality of life of our people. In this context, we keep on pushing our efforts to complete our coverage of treated water supply, electricity supply, better educational facilities and public health services to our rural communities.

Improving the Implementation Machinery and Delivery System

6

In the Ninth Malaysia Plan, timely and effective implementation of projects will be the order of the day. As such, it is vital that we have an implementation plan, as well as monitoring, auditing and reporting systems to ensure all projects and programmes meet their stated objectives and are implemented on schedule in accordance with the necessary mechanism and procedures.

NOTES

NOTES

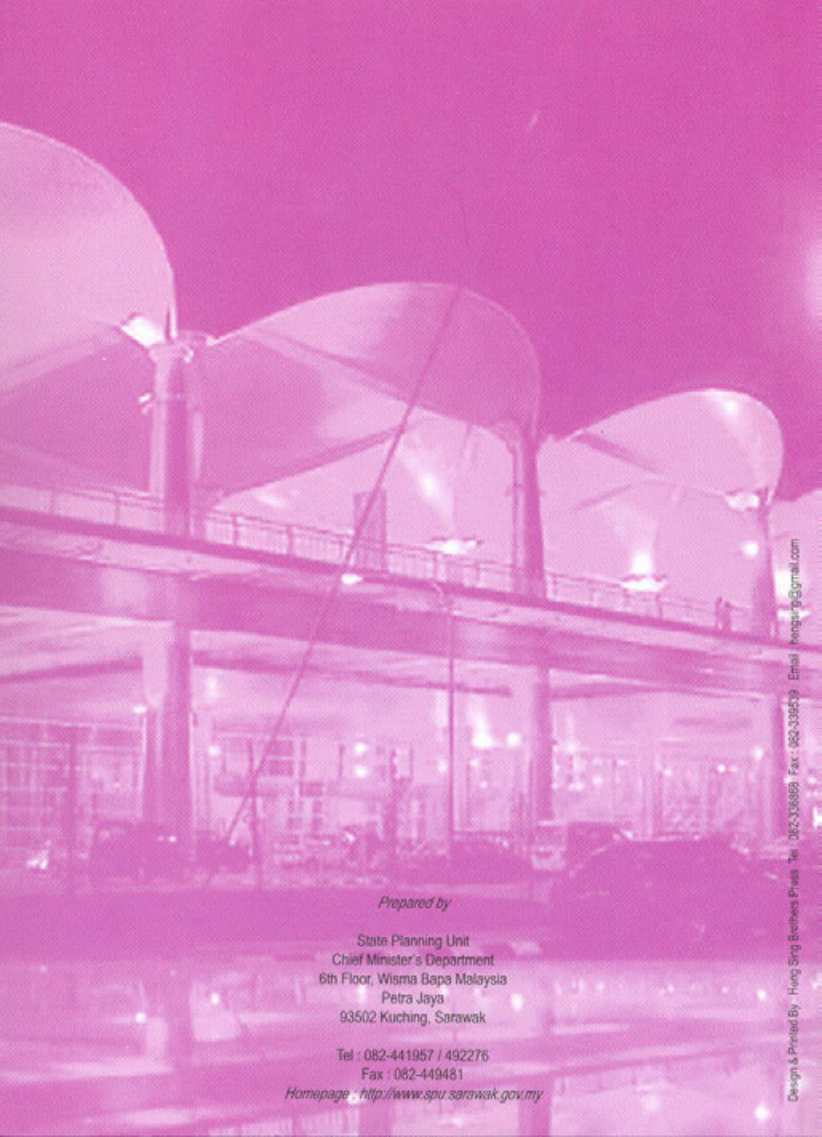
NOTES

NOTES

NOTES

NOTES

NOTES



Prepared by

State Planning Unit
Chief Minister's Department
6th Floor, Wisma Bapa Malaysia
Petra Jaya
93502 Kuching, Sarawak

Tel : 082-441957 / 492276
Fax : 082-449481

Homepage : <http://www.spu.sarawak.gov.my>