



SARAWAK

FACTS AND FIGURES

2010

State Planning Unit, Chief Minister's Department



SARAWAK

**FACTS AND FIGURES
2010**

Prepared by

State Planning Unit, Chief Minister's Department

RUKUNEGARA

DECLARATION

OUR NATION, MALAYSIA, being dedicated :

To achieving a greater unity of all her peoples ;

To maintaining a democratic way of life ;

To creating a just society in which the wealth of the nation shall be equitably shared ;

To ensuring a liberal approach to her rich and diverse cultural traditions ;

To building a progressive society which shall be oriented to modern science and technology ;

We, her peoples, pledge our united efforts to attain these ends guided by these principles :

Belief in God

Loyalty to King and Country

Upholding the Constitution

Rule of Law

Good Behaviour and Morality

SARAWAK FACTS AND FIGURES

CONTENTS

Page

A. BACKGROUND INFORMATION

State of Sarawak	1
Facts on Sarawak	2
Basic Statistics	3
Exchange Rates	3
State Government	4
Sarawak : Administrative Divisions and Districts	5 - 6
Sarawak : Land Use	7
Sarawak : Natural Resources	8
Key Summary Statistics of Malaysia Population 2000	9
Sarawak : Area, Population, Average Growth Rate & Population Density by District	10
Sarawak : Population by Administrative District 2000 & 2010	11
Sarawak : Population by Ethnic Group and Administrative District, 2000	12 - 13
Sarawak : Population by Age Group	14
Sarawak : Live Births, Deaths & Infant Deaths	15
Malaysia and Sarawak : Percentage Distribution of Employed Persons by Industry	16

B. SARAWAK ECONOMY

Malaysia and Sarawak : Gross Domestic Product	17
Sarawak : Gross Domestic Product	18
Sarawak : External Trade	19
Sarawak : Major Export Items	20
Sarawak : Inflation (2005=100)	21
Sarawak : Capital Investment in Manufacturing Projects	22
Malaysia : Approved Manufacturing Projects (ICA) by State	23

CONTENTS - (cont.)

C. AGRICULTURE

Planted Area of Main Crops	24
Sarawak : Major Agriculture Production	25
Sarawak : Number of Livestock	26
Sarawak : Landing of Marine Fish by Gear Group	27
Sarawak : Production of Forest and Forest Products	28

D. EDUCATION, HEALTH AND TOURISM

Sarawak : Education	29
Sarawak : Health Services	30
Sarawak : Visitor Arrivals by Country of Origin	31

E. TRANSPORT

Malaysia and Sarawak : Road by Surface Type	32
Sarawak : Total Motor Vehicles Registered as at End of Year	33
Sarawak : Aircraft Movements at Principal Airports	34
Sarawak : Arrivals and Departures of Vessels by Port	35
Sarawak : Cargo Loaded and Discharged at Principal Ports	36

F. UTILITIES AND OTHER SERVICES

Sarawak : Consumption and Production of Water	37
Sarawak : Unit Generated and Consumption of Electricity	37
Sarawak : Principal Statistics of All Professions (Private Sector)	38
Sarawak : Principal Statistics of Selected Professions	39

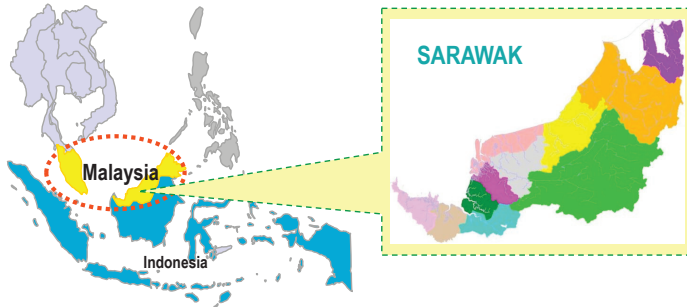
G. FINANCE

Sarawak : Revenue and Expenditure	40
Sarawak : Import and Export Duties, Sales Tax, Excise and Service Tax	41

BACKGROUND INFORMATION

State of Sarawak

Strategically located south of the booming North Asia markets...



- **LOCATION :**
Between latitude 0° 50' and 5°N and longitude 109° 36' and 115° 40'E
- **CLIMATE :**
Hot and Humid equatorial monsoon climate
- **RAINFALL :**
Mean Annual : 4,454mm
- **TEMPERATURE :**
Daily temperature range from 33°C (90°F) in the afternoon to 22°C (70°F) during the night
- **AREA :**
124,449.5 sq. km

FACTS ON SARAWAK

TOTAL AREA	: 124,449 square kilometres
LOCATION	: Between latitude 0° 50' and 5° N and longitude 109° 36' and 115° 40' E
SYSTEM OF GOVERNMENT	: Parliamentary democracy with a constitutional monarch
CAPITAL OF SARAWAK	: Kuching
MAJOR ETHNIC GROUPS	: Malay, Iban, Chinese, Bidayuh, Melanau, Orang Ulu, Indian, and other indigenous groups
MAJOR LANGUAGES	: Malay (official language), English, Mandarin, Iban, others local dialects
MAJOR RELIGIONS	: Islam (official religion), Buddhism, Christian, and Hindu
TIME	: GMT + 8 hours : US Eastern Standard Time + 13 hours
CLIMATE	: Tropical : warm and sunny throughout the year. Daily temperature range from 33° C (90° F) in the afternoon to 22° C (70° F) during the night.
CURRENCY	: Ringgit Malaysia (RM) which is divided in 100 cent.
EXCHANGE RATE	: Pegged at US\$1 = RM3.80 on 2 September 1998. Ringgit depeg on 21 July 2005. US\$1 = RM3.31 for January - June 2010

BASIC STATISTICS

	SARAWAK		MALAYSIA	
	2009 p	2010 e	2009 p	2010 e
Population (Million)	2.5	2.5	27.9	28.3
Labour Force (Million)	1.0	1.0	11.3	12.2
Employment (Million)	1.0	1.0	10.9	11.6
Unemployment Rate (%)	4.6	4.5	3.7	3.6
GDP Growth Rate at 1987 Constant Prices (%)	0.7	4.5	-1.7	6.0
GDP Growth Rate at Current Prices (%)	4.0	6.8	-8.3	10.0
Balance of Trade (RM Billion)	39.8	24.9*	118.4	62.4*
Exports (RM Billion)	64.2	37.5*	553.3	315.8*
Imports (RM Billion)	24.3	12.6*	434.9	253.4*

Notes : Malaysia GDP growth rate refer to 2000 Constant Prices

* Figures refer to January - June

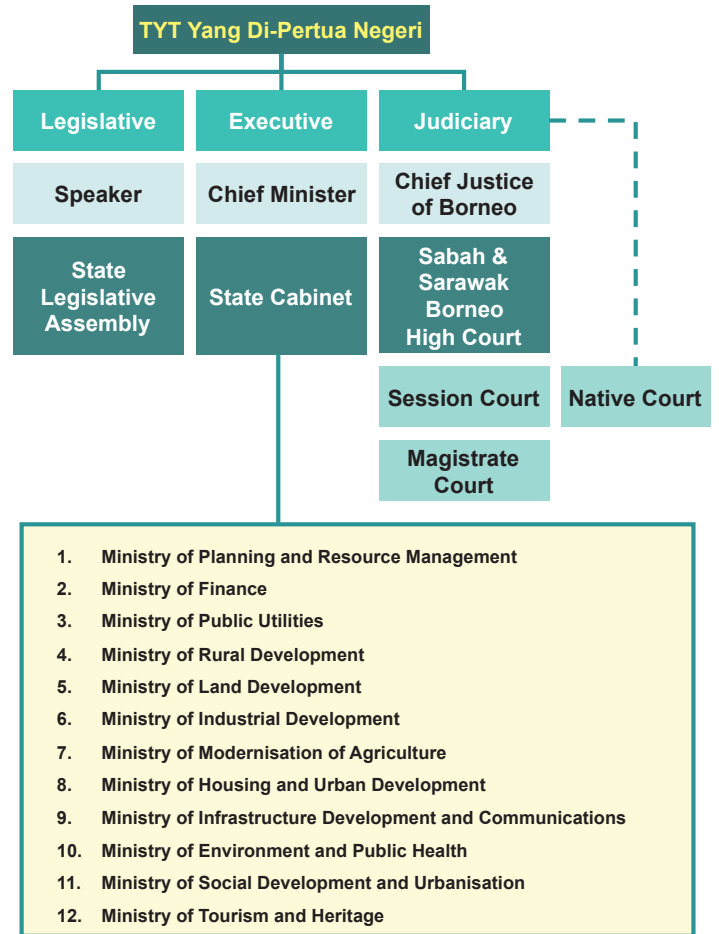
(e) estimate (p) preliminary

Mid-year population projections based on 2000 Population and Housing Census, Malaysia, adjusted for under enumeration (Revised).

EXCHANGE RATES

Foreign Currency	2007	2008	2009	2010
	Jan - June			
<i>(RM per Unit)</i>				
U.S. Dollar	3.4	3.3	3.5	3.3
Euro	4.7	4.9	4.9	4.4
Pound Sterling	6.9	6.2	5.5	5.1
Canadian Dollar	3.2	3.1	3.1	3.2
Australian Dollar	2.9	2.8	2.8	3.0
Singapore Dollar	2.3	2.4	2.4	2.4

State Government



ADMINISTRATIVE DIVISIONS AND DISTRICTS

DIVISION	DISTRICTS	SUBDISTRICTS	DIVISION	DISTRICTS	SUBDISTRICTS
KUCHING	Kuching	Padawan	SIBU	Sibu	
	Bau			Kanowit	
	Lundu	Sematan		Selangau	
SAMARAHAN	Samarahan		MUKAH	Mukah	Balingian
	Asajaya			Dalat	Oya
	Serian	Tebedu		Daro	Belawai
	Simunjan	Sebuyau		Matu	Igan
SRI AMAN	Sri Aman	Lingga, Pantu	BINTULU	Bintulu	Sebauh
	Lubok Antu	Engkilili		Tatau	
BETONG	Betong	Maludam, Debak,	KAPIT	Kapit	Ng. Merit
	Saratok	Spaoh, Pusa		Belaga	Sg. Asap
		Kabong, Roban,		Song	
		Budu			
SARIKEI	Sarikei		MIRI	Miri	Sibuti
	Meradong				Niah-Suai
	Julau			Marudi	Beluru, Long Lama
	Pakan				
			LIMBANG	Limbang	Ng. Medamit
				Lawas	Sundar, Trusan

Sarawak Administrative



SARAWAK : LAND USE

LAND USE CLASSES	1991	
	Sq. km	(%)
1. Settlement and associated non-agricultural lands	360	0.3
2. Horticultural lands (mainly miscellaneous cultivation and including small areas of fruit trees)	468	0.4
3. Tree, palm and other permanent crops	2,477	2.0
Rubber	1,448	1.2
Oil Palm	309	0.3
Coconut	434	0.4
Pepper	114	0.1
Sago	171	0.1
4. Crop land	37,076	30.1
Wet paddy	559	0.5
Shifting cultivation	36,517	29.6
5. Unused land (secondary growth)	634	0.5
6. Swamp forest	12,622	10.2
Mixed swamp forest	9,714	7.9
Alan	2,334	1.9
Padang Paya	574	0.5
7. Dry forest land	68,226	55.4
Hill forest	65,090	52.8
Kerangas forest	2,869	2.3
Riverain forest	259	0.2
Beach forest	8	0.01
8. Swamp (Paya) (including fresh and salt water and mangrove and nipah)	1,390	1.1
TOTAL	123,252	100.0

Source : Yearbook of Statistics Sarawak 2009

Planimetric Measurement of Land Use Map, Sarawak 1991 Edition 3 (Revised 1/93)

SARAWAK : NATURAL RESOURCES

1	Coastline	1,051 km
2	Land with Agriculture Potential	2.2 million ha
3	Land under Forest Cover	8.2 million ha
4	Area under Peat Soil	1.7 million ha
5	Marine Fish Production Potential	300,000 tonnes per year
6	Hydropower Potential	20,000 MW
7	Surface Water	306 billion m ³
8	Minerals	Approx. reserves
	Petroleum	1,388 million barrels
	Gas	42.6 trillion S.C.F
	Coal	1,483 million tonnes
	Silica Sand	73.8 million tonnes
	Kaolin Clay	22.6 million tonnes

Source : Minerals and Geoscience Department Malaysia
 Department of Marine Fisheries Sarawak
 Petroleum Nasional Berhad
 Ministry of Planning & Resource Management

Note : (S.C.F.) Standard Cubic Feet

KEY SUMMARY STATISTICS OF MALAYSIA POPULATION 2000

STATE	Population 2000 (’000)	Average Growth 1991-2000 (%)	State Distribution (%)	Area (sq. km)	Population Density (per sq. km)	Dependency Ratio (%)	Sex Ratio
SARAWAK	2,071.5	2.1	8.9	124,449	17	62.8	103
Sabah	2,603.5	4.0	11.2	73,620	35	68.8	107
Pahang	1,288.4	1.9	5.5	35,965	36	63.3	110
Perak	2,051.2	0.4	8.8	21,005	98	62.4	101
Johor	2,740.6	2.6	11.8	18,986	144	55.2	107
Kelantan	1,313.0	0.9	5.6	14,920	87	86.3	100
Terengganu	898.8	1.2	3.9	12,955	69	78.9	104
Kedah	1,649.8	2.1	7.1	9,426	175	65.9	99
Selangor	4,188.9	6.1	18.0	7,955	526	49.7	105
Negeri Sembilan	859.9	1.9	3.7	6,643	129	58.1	105
Melaka	635.8	2.0	2.7	1,651	385	58.9	101
Penang	1,313.4	1.8	5.6	1,030	1,274	46.8	99
Perlis	204.5	0.8	0.9	795	257	66.1	97
F. T. of Kuala Lumpur	1,379.3	1.3	5.9	243	5,676	40.4	103
F. T. of Labuan	76.1	3.6	0.3	92	827	64.1	110
MALAYSIA	23,274.7	2.6	100.0	329,735	71	59.2	104

Source : Population and Housing Census of Malaysia, 2000

Notes : Sex ratio - the ratio of the number of males for every 100 females.

The dependency ratio is a measure of the dependence that non-working people have on working people.

Figures presented in this table have been adjusted based on the estimates of under-enumeration derived from the Census Coverage Evaluation Survey.

SARAWAK : AREA, POPULATION, AVERAGE GROWTH RATE & POPULATION DENSITY BY DISTRICT

Division / District	Population 1991 (’000)	Population 2000 (’000)	Avg. Annual Gwth Rate (%) (1991-2000)	Area (sq. km)	Population Density (Person/Sq. km) (2000)
Kuching	369.1	494.1	3.2	1,862.8	265.3
Bau	36.0	41.8	1.7	884.4	47.3
Lundu	24.5	27.3	1.2	1,812.3	15.1
KUCHING DIVISION	429.5	563.3	3.0	4,559.5	123.5
Samarahan	33.2	47.0	3.9	407.1	115.4
Serian	71.9	79.6	1.1	2,039.9	39.0
Simunjan	35.1	37.3	0.7	2,217.6	16.8
Asajaya	24.4	28.5	1.7	302.8	94.2
SAMARAHAN DIVISION	164.6	192.4	1.7	4,967.4	38.7
Sri Aman	58.6	62.8	0.8	2,323.7	27.0
Lubok Antu	22.2	23.3	0.5	3,142.6	7.4
SRI AMAN DIVISION	80.9	86.0	0.7	5,466.3	15.7
Betong	44.0	50.4	1.5	2,493.9	20.2
Saratok	37.9	42.0	1.1	1,686.9	24.9
BETONG DIVISION	81.9	92.4	2.6	4,180.8	22.1
Sarikei	49.6	57.1	1.6	985.0	58.0
Maradong	27.0	28.9	0.8	719.0	40.3
Julau	28.1	31.7	1.3	2,628.4	12.1
SARIKEI DIVISION	104.7	117.8	1.3	4,332.4	27.2
Sibu	170.4	210.1	2.3	2,229.8	94.2
Kanowit	25.4	27.1	0.7	2,253.5	12.0
SIBU DIVISION	195.8	237.3	2.1	4,483.3	52.9
Mukah	41.8	44.8	0.8	6,331.0	7.1
Dalat	22.0	23.5	0.7	905.3	25.9
Matu	9.2	11.2	2.2	1,600.0	7.0
Daro	13.2	14.9	1.3	1,956.3	7.6
MUKAH DIVISION	86.2	94.3	5.0	10,792.6	8.7
Bintulu	86.1	139.0	5.3	7,220.4	19.3
Tatau	21.1	23.2	1.1	4,945.8	4.7
BINTULU DIVISION	107.3	162.3	4.6	12,166.2	13.3
Kapit	55.6	56.7	0.2	15,595.6	3.6
Song	17.6	19.2	1.0	3,935.2	4.9
Belaga	22.3	22.9	0.3	19,403.2	1.2
KAPIT DIVISION	95.5	98.8	0.4	38,934.0	2.5
Miri	161.4	221.1	3.5	4,707.1	47.0
Marudi	72.0	71.7	0.0	22,070.0	3.2
MIRI DIVISION	233.3	292.8	2.5	26,777.1	10.9
Limbang	33.9	39.8	1.8	3,978.1	10.0
Lawas	29.3	32.7	1.2	3,811.9	8.6
LIMBANG DIVISION	63.2	72.5	1.5	7,790.0	9.3
SARAWAK	1,642.8	2,009.9	2.2	124,449.5	16.2

Source : Population and Housing Census of Malaysia, 1991 & 2000, Department of Statistics Malaysia

Note : Population figures shown have not been adjusted for under-enumeration.

SARAWAK : POPULATION BY ADMINISTRATIVE DISTRICT 2000 & 2010

Administrative District	2000					2010 e
	Male	Female	Total	Urban	Rural	
SARAWAK	1,018,308	991,585	2,009,893	964,393	1,045,500	2,506,500
Kuching	247,537	246,572	494,109	422,240	71,869	600,200
Bau	21,499	20,325	41,824	-	41,824	49,700
Lundu	13,950	13,395	27,345	-	27,345	33,700
Samarahan	23,583	23,383	46,966	23,064	23,902	54,700
Serian	40,002	39,630	79,632	-	79,632	96,000
Simunjan	18,852	18,435	37,287	-	37,287	43,100
Asajaya	14,477	14,036	28,513	-	28,513	33,700
Sri Aman	31,244	31,531	62,775	21,243	41,532	76,500
Lubok Antu	11,584	11,671	23,255	-	23,255	25,100
Betong	25,346	25,046	50,392	-	50,392	72,900
Saratok	21,032	21,003	42,035	-	42,035	52,000
Sarikei	28,725	28,371	57,096	25,053	32,043	66,700
Maradong	14,180	14,762	28,942	-	28,942	33,300
Julau	16,185	15,538	31,723	-	31,723	40,000
Sibu	104,814	105,304	210,118	167,427	42,691	257,800
Kanowit	13,228	13,915	27,143	-	27,143	32,700
Mukah	23,054	21,783	44,837	-	44,837	55,100
Dalat	11,358	12,104	23,462	-	23,462	29,200
Matu	5,286	5,897	11,183	-	11,183	14,500
Daro	7,446	7,405	14,851	-	14,851	18,900
Bintulu	73,693	65,319	139,012	103,733	35,279	199,900
Tatau	12,225	11,016	23,241	-	23,241	31,300
Kapit	28,166	28,543	56,709	13,610	43,099	71,100
Song	9,562	9,674	19,236	-	19,236	24,400
Belaga	12,778	10,118	22,896	-	22,896	30,300
Miri	113,715	107,340	221,055	169,005	52,050	281,300
Marudi	37,333	34,380	71,713	-	71,713	90,100
Limbang	20,400	19,417	39,817	19,018	20,799	49,700
Lawas	17,054	15,672	32,726	-	32,726	42,500

Source : Population and Housing Census of Malaysia 2000
Department of Statistics

Notes : Figures presented in this table have not been adjusted for under-enumeration.

Mid-year population projections based on 2000, Population and Housing Census, Malaysia, adjusted for under enumeration (Revised).

SARAWAK : POPULATION BY ETHNIC GROUP AND ADMINISTRATIVE DISTRICT, 2000

Administrative District	Total	Iban	Chinese	Malay	Bidayuh
Kuching	509,374	47,597	197,955	180,957	63,943
Bau	43,190	648	9,205	3,583	29,215
Lundu	28,070	3,750	3,539	9,328	10,717
Samarahan	48,068	7,516	8,682	27,190	3,138
Serian	82,042	12,147	10,204	9,519	49,117
Simunjan	38,098	16,673	1,475	19,342	307
Asajaya	29,012	2,421	2,532	23,720	119
Sri Aman	64,475	37,337	8,262	17,748	453
Lubok Antu	23,966	20,729	2,262	694	73
Betong	51,426	18,764	2,321	29,919	162
Saratok	43,035	22,103	2,892	17,641	67
Sarikei	59,043	16,934	22,640	8,115	203
Maradong	29,917	12,606	11,052	4,383	134
Julau	32,668	31,034	1,070	256	80
Sibu	218,106	53,104	119,550	20,664	1,505
Kanowit	27,982	23,168	3,408	859	57
Mukah	46,182	24,637	3,416	1,326	157
Dalat	24,152	8,129	1,486	407	28
Matu	11,498	676	468	544	7
Daro	15,268	869	490	749	12
Bintulu	143,429	56,424	28,995	13,981	1,923
Tatau	23,943	15,154	1,572	991	123
Kapit	58,430	47,900	4,679	1,657	274
Song	19,806	17,865	933	731	69
Belaga	23,611	2,820	1,352	1,027	105
Miri	228,231	65,102	70,993	41,559	3,692
Marudi	73,922	25,547	6,190	4,325	637
Limbang	40,959	11,154	6,338	10,122	271
Lawas	33,603	927	3,269	10,933	168
Total	2,071,506	603,735	537,230	462,270	166,756

**SARAWAK : POPULATION BY ETHNIC GROUP AND
ADMINISTRATIVE DISTRICT, 2000 (CONT'D)**

Administrative District	Melanau	Other Bumiputera	Others	Non Malaysian Citizens
Kuching	3,608	3,301	3,434	8,579
Bau	64	146	87	242
Lundu	86	69	49	532
Samarahan	506	601	225	210
Serian	149	180	115	611
Simunjan	72	52	132	45
Asajaya	61	86	7	66
Sri Aman	247	111	30	287
Lubok Antu	15	40	5	148
Betong	76	66	11	107
Saratok	134	59	43	96
Sarikei	9,501	111	29	1,510
Maradong	1,572	86	20	64
Julau	116	85	6	21
Sibu	14,514	1,131	248	7,390
Kanowit	355	96	9	30
Mukah	15,665	267	78	636
Dalat	13,946	72	6	78
Matu	9,732	37	3	31
Daro	13,096	31	3	18
Bintulu	16,614	7,025	660	17,807
Tatau	1,397	2,450	63	2,193
Kapit	961	1,848	42	1,069
Song	85	103	9	11
Belaga	215	17,072	56	964
Miri	9,447	20,568	1,840	15,030
Marudi	430	34,016	322	2,455
Limbang	195	11,869	147	863
Lawas	125	16,112	424	1,645
Total	112,984	117,690	8,103	62,738

Source : Population and Housing Census of Malaysia 2000

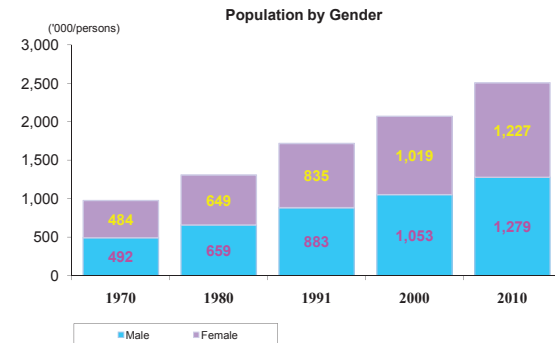
Note : Figures in this table have been adjusted based on the estimates of under-enumeration derived from the Census Coverage Evaluation Survey.

SARAWAK : POPULATION BY AGE GROUP

Age Group	1991	2000	2010 e
	('000)	('000)	('000)
0 - 4	223.3	265.6	228.6
5 - 9	210.1	231.5	241.8
10 - 14	192.1	213.0	262.3
15 - 19	180.3	196.9	231.4
20 - 24	166.6	176.7	214.9
25 - 29	156.4	173.0	198.3
30 - 34	129.6	164.2	193.5
35 - 39	110.4	147.9	183.5
40 - 44	82.2	127.1	169.3
45 - 49	68.3	102.7	150.5
50 - 54	52.2	79.9	124.3
55 - 59	43.3	59.5	100.9
60 - 64	36.1	44.7	74.2
65 - 69	25.4	34.6	51.5
70 - 74	20.3	25.3	35.6
75+	21.6	28.9	45.9
Total	1,718.4	2,071.5	2,506.5

Source : Yearbook of Statistics Sarawak 2009
Department of Statistics

Note : Mid-year population projections based on 2000, Population and Housing Census, Malaysia, adjusted for under enumeration (Revised).



SARAWAK : LIVE BIRTHS AND CRUDE BIRTH RATE

Ethnic Group	2006		2007		2008 p	
	Number	Crude Rate	Number	Crude Rate	Number	Crude Rate
Total	42,149	18.4	41,840	18.1	41,650	17.7
Malay	10,484	20.2	10,608	20.1	10,829	20.2
Iban	12,486	18.8	11,949	17.7	12,001	17.6
Bidayuh	3,369	18.2	3,349	18.8	3,328	17.5
Melanau	2,694	21.5	2,724	21.3	2,765	21.3
Other Bumiputera	2,674	20.5	2,763	20.8	2,727	20.2
Chinese	9,137	15.6	9,126	15.4	8,642	14.4
Others *	1,305	17.1	1,321	17.1	1,358	17.3

SARAWAK : DEATHS AND CRUDE DEATH RATE

Ethnic Group	2006		2007		2008 p	
	Number	Crude Rate	Number	Crude Rate	Number	Crude Rate
Total	9,406	4.1	9,569	4.1	10,007	4.3
Malay	1,916	3.7	1,892	3.6	1,994	3.7
Iban	3,003	4.5	3,144	4.7	3,374	4.9
Bidayuh	683	3.7	761	4.1	771	4.0
Melanau	691	5.5	695	5.5	723	5.6
Other Bumiputera	642	4.9	426	3.2	497	3.7
Chinese	2,345	4.0	2,522	4.3	2,534	4.2
Others *	126	1.7	129	1.7	114	1.4

SARAWAK : INFANT DEATHS AND INFANT MORTALITY RATE

Ethnic Group	2006		2007		2008 p	
	Number	Crude Rate	Number	Crude Rate	Number	Crude Rate
Total	263	6.2	248	5.9	252	6.1
Malay	91	8.7	66	6.2	65	6.0
Iban	61	4.9	77	6.4	70	5.8
Bidayuh	26	7.7	19	5.7	23	6.9
Melanau	22	8.2	20	7.3	27	9.8
Other Bumiputera	15	5.6	12	4.3	13	4.8
Chinese	42	4.6	45	4.9	51	5.9
Others *	6	4.6	9	6.8	3	2.2

Source : Monthly Statistical Bulletin Sarawak, March 2010

Notes : * Includes non-Malaysian citizens

(p) preliminary

MALAYSIA AND SARAWAK : PERCENTAGE DISTRIBUTION OF EMPLOYED PERSONS BY INDUSTRY

Sector	2007		2008		2009	
	(%)		(%)		(%)	
	Malaysia	Sarawak	Malaysia	Sarawak	Malaysia	Sarawak
Agriculture, Forestry, Livestock and Fishing	14.7	30.4	14.0	26.3	13.5	28.2
Mining & Quarrying	0.4	0.6	0.5	1.1	0.6	1.4
Manufacturing	18.8	11.6	18.2	12.2	16.6	10.2
Construction	8.8	8.8	9.4	10.7	9.3	9.9
Electricity, Gas and Water	0.6	0.6	0.6	0.7	0.5	0.6
Wholesale and Retail Trade, Restaurants and Hotels	23.4	19.0	23.6	20.0	24.1	19.6
Transport, Storage and Communication	5.1	3.8	5.5	4.2	5.4	4.1
Financing, Insurance, Real Estate and Business Services	8.0	5.0	7.8	4.4	8.0	4.8
Community, Social, Personal Services and Other Services	20.2	20.2	20.5	20.4	21.9	21.2
Total	100.0	100.0	100.0	100.0	100.0	100.0
Total Employed Persons	10,538,100	954,100	10,659,600	921,700	10,897,300	977,500
Total Labour Force	10,889,500	997,400	11,028,100	973,000	11,315,300	1,024,200

Source : Malaysia Labour Force Survey Report 2009

SARAWAK ECONOMY

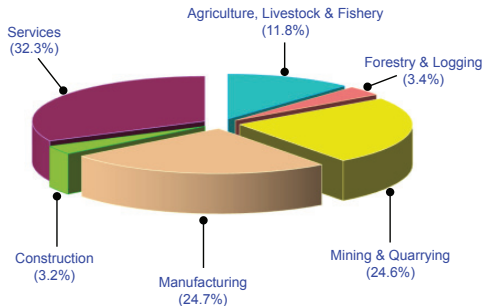
MALAYSIA AND SARAWAK : GROSS DOMESTIC PRODUCT

	2007	2008	2009 p	2010 f
MALAYSIA				
GDP at Constant 2000 Prices (RM Million)	506,341	530,181	521,095	552,115
Growth Rate (%)	6.5	4.7	-1.7	6.0
GDP at Current Prices (RM Million)	642,049	740,907	679,687	747,654
Growth Rate (%)	11.8	15.4	-8.3	10.0
SARAWAK				
GDP at Constant 1987 Prices (RM Million)	24,602	25,827	26,016	27,174
Growth Rate (%)	5.8	5.0	0.7	4.5
GDP at Current Prices (RM Million)	65,945	70,643	73,473	78,437
Growth Rate (%)	9.4	7.1	4.0	6.8

Source : State Planning Unit

The Malaysian Economy in Figures 2010, Economic Planning Unit
Annual Report 2009, Bank Negara Malaysia

Notes : (f) forecast (p) preliminary

Sarawak : GDP Share (%) by Sector, 2010

SARAWAK : GROSS DOMESTIC PRODUCT

Sector	2008		2009 p		2010 f	
	RM Mil	% Chg	RM Mil	% Chg	RM Mil	% Chg
REAL GDP (at constant 1987 prices)						
Agriculture, Livestock and Fishery	2,962	8.3	3,080	4.0	3,248	5.5
Forestry and Logging	907	-0.5	904	-0.3	902	-0.3
Mining & Quarrying	6,687	3.7	6,461	-3.4	6,659	3.1
Manufacturing	6,444	5.3	6,450	0.1	6,750	4.7
Construction	779	4.2	811	4.1	860	6.0
Services	8,048	5.3	8,310	3.2	8,756	5.4
GDP at purchasers' value	25,827	5.0	26,016	0.7	27,174	4.5
NOMINAL GDP (at current prices)						
Government Final Consumption	5,178	5.7	5,386	4.0	5,695	5.7
Private Final Consumption	12,139	7.8	12,412	2.2	12,894	3.9
Gross Fixed Capital Formation	5,687	6.7	6,001	5.5	6,638	10.6
Exports of Goods & Services	93,426	29.4	71,849	-23.1	79,215	10.3
Less : Imports of Goods & Services	27,802	7.3	24,561	-11.7	26,899	9.5
GDP at purchasers' value	70,643	7.1	73,473	4.0	78,437	6.8
GDP / CAPITA	28,487		29,347		30,728	

Source : State Planning Unit

Notes : (p) preliminary (f) forecast

SARAWAK : EXTERNAL TRADE

Commodity Section (RM Million)	2007	2008	2009 p
EXPORTS	68,200.8	91,341.4	64,150.7
IMPORTS	25,023.0	28,050.4	24,317.3
TRADE BALANCE	43,177.8	63,291.0	39,833.4
Exports by Commodity Section (RM Million)			
Total	68,200.8	91,341.4	64,150.7
Food	581.6	657.0	510.5
Beverages and Tobacco	97.2	89.0	88.4
Crude Materials, Inedible	3,482.2	3,264.3	2,922.8
Mineral Fuels, Lubricants etc	49,502.0	70,789.9	46,586.1
Animal and Vegetable Oils and Fats	4,268.4	6,209.0	5,064.8
Chemicals	832.1	1,261.6	976.4
Manufactured Goods	6,286.5	6,176.7	4,792.4
Machinery & Transport Equipment	2,984.6	2,721.9	3,037.7
Miscellaneous Manufactured Articles	132.6	151.2	150.0
Other Miscellaneous	33.6	20.8	21.6
Imports by Commodity Section (RM Million)			
Total	25,023.0	28,050.4	24,317.3
Food	2,191.3	2,691.1	2,619.9
Beverages and Tobacco	292.9	292.2	291.7
Crude Materials, Inedible	480.1	356.9	556.1
Mineral Fuels, Lubricants, etc	3,847.8	5,544.0	3,502.2
Animal and Vegetable Oils & Fats	116.8	207.7	85.9
Chemicals	3,459.7	3,615.0	2,830.6
Manufactured Goods	4,142.8	4,451.4	4,268.8
Machinery and Transport Equipment	8,633.3	8,867.3	8,321.6
Miscellaneous Manufactured Articles	1,551.7	1,779.7	1,588.1
Other Miscellaneous	306.6	245.1	252.4

Source : Yearbook of Statistics Sarawak, 2009

Monthly Statistical Bulletin Sarawak, April 2010

Note : (p) preliminary

SARAWAK : MAJOR EXPORT ITEMS

Items	2007	2008	2009 p
Rubber			
Quantity ('000 kg)	82,740	41,326	26,730
Value (RM '000)	418,735	287,674	155,174
Export price (sen/kg fob)	506	696	581
Black pepper			
Quantity (tonne)	11,237	9,959	10,563
Value (RM '000)	120,804	111,755	105,955
Export price (RM/tonne fob)	10,751	11,221	10,031
White pepper			
Quantity (tonne)	3,786	2,394	2,553
Value (RM '000)	56,677	41,996	38,854
Export price (RM/tonne fob)	14,970	17,543	15,220
Palm oil (crude & processed)			
Quantity (tonne)	1,597,679	1,884,872	2,022,069
Value (RM '000)	3,839,919	5,383,751	4,557,879
Export price (RM/tonne fob)	2,403	2,856	2,254
Liquefied Natural Gas (LNG)			
Quantity ('000 tonnes)	22,896	23,092	22,185
Value (RM '000)	26,931,019	41,464,624	31,195,015
Export price (RM/tonne fob)	1,176	1,796	1,406
Crude Petroleum			
Quantity ('000 tonnes)	10,497	9,649	8,385
Value (RM '000)	20,600,088	26,707,970	13,792,992
Export price (RM/tonne fob)	1,963	2,769	1,645
Saw Logs			
Quantity ('000 cu. metre)	3,553	3,394	3,667
Value (RM '000)	1,643,635	1,664,684	1,755,853
Export price (RM/cu. metre fob)	463	490	479
Sawn Timber			
Quantity ('000 cu. metre)	1,112	1,046	849
Value (RM '000)	1,004,867	985,013	781,310
Export price (RM/cu. metre fob)	904	941	920

Source : Yearbook of Statistics Sarawak, 2009

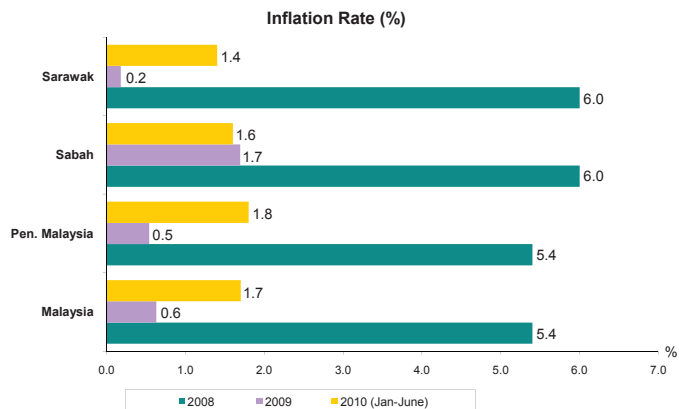
Monthly Statistical Bulletin Sarawak, April 2010

Note : (p) preliminary

INFLATION (2005=100)

Commodity Section	2007	2008	2009	2010
				Jan - June
INFLATION	1.7	6.0	0.2	1.4
Food & Non-Alcoholic Beverages	2.9	9.6	4.8	2.2
Alcoholic Beverages & Tobacco	6.3	5.9	4.9	2.5
Clothing & Footwear	-0.9	-0.9	-3.0	-4.2
Housing, Water, Electricity, Gas & Other Fuels	0.9	0.8	0.2	1.0
Furnishings, Household Equipment & Routine Household Maintenance	0.8	2.5	2.4	0.5
Health	1.0	2.5	1.7	2.8
Transport	1.6	9.9	-9.1	1.0
Communication	-1.2	-0.9	-0.6	-0.5
Recreation Services & Culture	0.3	1.1	1.6	2.2
Education	2.0	2.4	2.5	2.5
Restaurants & Hotels	3.8	9.0	2.1	0.8
Miscellaneous Goods & Services	0.8	3.3	5.0	2.3
Durable Goods	-1.4	1.3	1.2	0.8
Semi-Durable Goods	-0.5	-0.2	-1.7	-3.0
Non-Durable Goods	2.4	9.5	-1.4	1.8
Services	1.9	3.8	2.1	1.5

Source : Malaysia Consumer Price Index, June 2010



SARAWAK : CAPITAL INVESTMENT IN MANUFACTURING PROJECTS

Manufacturing Projects	2006	2007	2008	2009
<i>(RM Million)</i>				
DOMESTIC	2,101	1,456	3,402	1,598
FOREIGN	517	96	22,946	9,936
TOTAL	2,618	1,552	26,349	11,534

Approved Capital Investment

Commodity Section	2006	2007	2008	2009
<i>(RM Million)</i>				
Food	401	203	150	255
Beverages	9	0	2	4
Wood Based & Rattan Products	564	363	155	122
Printing, Publishing & Allied Industries	436	0	4	0
Basic Metal Product	27	779	23,935	154
Chemical & Chemical Products	599	92	6	331
Petroleum & Other Related Products	0	0	1,166	9,832
Non Metallic Mineral Products	94	7	5	753
Electrical Machinery, Appliances & Supplies	418	3	35	34
Transport Equipment	50	72	784	31
Textiles & Garments	0	0	4	0
Rubber Products	3	10	1	1
Miscellaneous Manufacturing Industry	17	23	102	17
Total Capital Investment	2,618	1,552	26,349	11,534

Source : Ministry of Industrial Development

Note : Including projects supported under ICA

MALAYSIA : APPROVED MANUFACTURING PROJECTS (ICA) BY STATE

State	2008		2009		2010 (Jan - March)	
	Number	Total Capital Investment (RM Million)	Number	Total Capital Investment (RM Million)	Number	Total Capital Investment (RM Million)
Selangor	302	11,871	278	6,760	63	1,501
Johor	173	11,712	150	4,063	34	654
Penang	151	10,156	104	2,165	20	141
Pahang	23	1,081	17	605	-	-
Kedah	46	2,567	40	1,496	12	1,595
Perak	50	3,130	47	894	10	970
Sabah	40	964	25	5,664	7	67
Melaka	41	3,635	23	893	4	5
Sarawak	39	15,169	25	8,451	9	78
Negeri Sembilan	26	1,116	30	858	7	115
Terengganu	9	992	9	506	-	-
F. T. of Kuala Lumpur	12	118	14	156	1	4
Kelantan	3	84	4	127	3	70
Perlis	2	170	-	-	-	-
F. T. of Labuan	2	21	-	-	-	-
Total	919	62,785	766	32,637	170	5,201

Source : www.mida.gov.my

AGRICULTURE

PLANTED AREA OF MAIN CROPS

MALAYSIA	2006	2007	2008 p	2009 p
<i>('000 Hectares)</i>				
Oil Palm	4,165.2	4,304.9	4,487.9	4,691.2
Cocoa	31.2	27.9	20.9	20.6
Rubber	1,263.6	1,248.0	1,247.0	1,237.0
Paddy (Wet & Dry/Hill)	676.0	674.1	656.6	674.8
SARAWAK				
<i>('000 Hectares)</i>				
Oil Palm	591.5	664.6	744.4	839.7
Cocoa	3.5	4.4	5.5	6.8
Rubber	155.6	157.2	157.1	157.2
Paddy (Wet & Dry/Hill)	127.2	123.2	115.9	na
Pepper	12.3	11.8	11.3	13.6 e
SABAH				
<i>('000 Hectares)</i>				
Oil Palm	1,244.8	1,278.2	1,330.0	1,360.4
Cocoa	18.8	17.5	8.6	7.4
Rubber	65.4	71.1	71.1	71.1
Paddy (Wet & Dry/Hill)	38.5	41.4	37.4	na

Source : Malaysian Palm Oil Board
 Malaysian Cocoa Board
 Malaysian Rubber Board
 Department of Agriculture

Ministry of Plantation Industries and Commodities
 Monthly Statistical Bulletin Malaysia, May 2010

Notes : (p) preliminary (e) estimate (na) not available

SARAWAK : MAJOR AGRICULTURE PRODUCTION

Commodity	2006	2007	2008	2009 p
Crude Palm Oil ('000 tonnes)	1,503.1	1,634.6	1,864.4	1,995.8
Cocoa Beans (raw/roasted) ('000 tonnes)	1.9	1.9	1.4	1.3
Rubber ('000 tonnes) *	100.4	82.7	41.3	26.7
Pepper (White & Black) ('000 tonnes)	19.0	20.0	22.0	23.0 e

Source : Yearbook of Statistics Sarawak 2009

Monthly Statistical Bulletin Sarawak, April 2010

Notes : * Refer to exports

(p) preliminary (e) estimate

SARAWAK : NUMBER OF LIVESTOCK

Selected Livestock	2006	2007	2008	2009 p
Cattle				
Population	12,918	11,919	12,964	13,983
Recorded Slaughter	589	558	652	1,049
Buffaloes				
Population	8,765	7,687	8,146	7,973
Recorded Slaughter	149	128	49	50
Goats				
Population	11,146	9,202	12,018	14,656
Recorded Slaughter	227	218	224	239
Sheep				
Population	3,408	1,912	3,338	3,553
Recorded Slaughter	56	20	68	60
Swine				
Population	423,858	496,881	216,037	346,146
Recorded Slaughter	217,962	230,078	229,187	216,961

Source : Yearbook of Statistics Sarawak 2009
Department of Agriculture Sarawak

SARAWAK : LANDING OF MARINE FISH BY GEAR GROUP

Gear Group	2006	2007	2008	2009
(Tonne)				
Trawl Nets	98,560	90,566	79,898	73,999
Drift/Gill Nets	25,865	28,669	28,196	28,277
Bag Nets	9,445	6,477	5,067	4,696
Push/Scoop Lift Nets	379	658	311	274
Hooks and Lines	3,775	3,319	4,263	2,189
Others	10,641	10,543	15,733	11,105
TOTAL	148,665	140,232	133,468	120,540

Source : Monthly Statistical Bulletin Sarawak, April 2010

SARAWAK : PRODUCTION OF FOREST AND FOREST PRODUCTS

Particulars	2006	2007	2008	2009 p
Saw Logs ('000 m ³)	11,864	11,891	11,336	10,368
Sawn Timber ('000 m ³)	1,248	1,084	1,148	1,037
Plywood ('000 m ³)	3,411	3,216	3,124	2,480
Laminated Boards ('000 m ³)	47	55	33	27
Mouldings / Dowels ('000 m ³)	17	21	17	13
Woodchips ('000 tonnes)	183	241	210	182
Veneer ('000 m ³)	301	483	800	649
Poles ('000)	4,729	4,385	4,104	2,856
Cordwood ('000 tonne)	78	79	87	191
Charcoal (tonne)	65	17	9	35

Source : Yearbook of Statistics Sarawak 2009

Monthly Statistical Bulletin Sarawak, April 2010

Sarawak Timber Industry Development Corporation (STIDC)

Note : (p) preliminary

EDUCATION, HEALTH AND TOURISM

SARAWAK : EDUCATION

Particulars	2005	2006	2007	2008
Total Number of Students	501,671	507,361	512,843	513,187
Primary School Enrolment	291,835	293,739	295,825	295,976
Secondary School Enrolment	206,092	210,000	213,088	212,772
Technical Secondary School	3,744	3,622	3,930	4,439
Total Number of Teachers	30,614	31,561	32,792	34,990
Teachers in Primary School	18,968	19,311	20,074	20,910
Teachers in Secondary School	11,054	11,687	12,161	13,545
Technical Secondary School	592	563	557	535
Total Number of Schools	1,456	1,463	1,461	1,463
Primary Schools	1,267	1,269	1,268	1,269
Secondary Schools	182	187	186	187
Technical Secondary School	7	7	7	7

Source : Yearbook of Statistics Sarawak 2009

SARAWAK : HEALTH SERVICES

Health Services	2005	2006	2007	2008
Hospital *	22	22	22	22
Health Clinic, Rural Clinic, Maternal & Child Health Clinic, Mobile Clinic and Dental Clinic	548	546	536	509
Number of Beds	4,774	4,770	4,882	4,900
Doctors	1,005	1,002	1,084	1,126
Nurses	2,200	2,393	2,479	5,101
Dentists	154	151	150	168

Source : Yearbook of Statistics Sarawak 2009

Note : * Including Sentosa Hospital & Rajah Charles Brooke Memorial Hospital.

SARAWAK : VISITOR ARRIVALS BY COUNTRY OF ORIGIN

Country	2007	2008	2009	2010 (Jan - April)	
				Number	% Share
Brunei	1,474,522	1,414,342	1,203,919	364,531	22.8
Singapore	38,291	40,396	50,243	12,615	0.8
Thailand	19,061	21,406	19,328	4,632	0.3
Indonesia	410,224	443,308	499,004	122,082	7.6
Philippines	86,344	97,799	106,237	26,271	1.6
Japan	8,733	9,873	9,763	2,602	0.2
Taiwan	6,930	7,720	7,986	2,301	0.1
Hong Kong	551	370	544	80	0.0
China	24,261	37,340	38,477	11,907	0.7
India	17,193	19,276	21,833	5,685	0.4
United Kingdom & Ireland	36,029	35,541	36,862	9,648	0.6
Eastern & Western Europe	34,674	35,797	40,418	8,346	0.5
USA	13,617	10,766	11,500	2,953	0.2
Canada	8,499	7,845	7,483	2,097	0.1
Australia & New Zealand	27,488	26,055	27,272	7,039	0.4
Others	174,404	53,299	36,579	10,506	0.7
Malaysia	2,898,737	2,861,889	3,063,778	1,003,093	62.8
Total	5,279,558	5,123,022	5,181,226	1,596,388	100.0

Source : Monthly Statistical Bulletin Sarawak, June 2010

TRANSPORT

MALAYSIA AND SARAWAK : ROAD BY SURFACE TYPE

Type	2006		2007		2008	
	Km.	Share (%)	Km.	Share (%)	Km.	Share (%)
MALAYSIA (329,961 Sq. Km)						
Paved	71,292	79.1	81,045	68.9	98,015	79.9
Gravel	15,707	17.4	33,328	28.3	16,373	13.3
Earth	3,128	3.5	3,338	2.8	8,280	6.7
Total	90,127	100.0	117,711	100.0	122,668	100.0

SARAWAK (124,449 Sq. Km)

Paved	10,191	77.0	10,655	78.6	12,995	76.9
Gravel	2,515	19.0	2,413	17.8	3,408	20.2
Earth	525	4.0	486	3.6	503	3.0
Total	13,231	100.0	13,554	100.0	16,906	100.0

Source : *Statistics Handbook Malaysia 2009*
Yearbook of Statistics Sarawak 2009

SARAWAK : TOTAL MOTOR VEHICLES REGISTERED AS AT END OF YEAR

Type	2006	2007	2008	2009
Motor Cars	409,517	435,154	463,030	492,101
Motorcycles	452,402	480,425	512,848	542,653
Taxi, Hire and Drive Cars	5,828	5,998	6,123	6,230
Buses	2,600	2,621	2,673	2,759
Goods Vehicles	52,805	56,599	60,212	63,461
Others	106,375	114,506	122,958	132,342
Total	1,029,527	1,095,303	1,167,844	1,239,546

Source : *Monthly Statistical Bulletin Sarawak, April 2010*

SARAWAK : AIRCRAFT MOVEMENTS AT PRINCIPAL AIRPORTS

Airports	2007	2008	2009 p	2010 p
				Jan - May
Kuching	40,506	39,904	44,960	19,175
Sibu	10,625	13,621	17,150	8,051
Miri	35,426	38,710	41,016	17,272
Bintulu	6,694	16,605	10,983	4,752
Total	93,251	108,840	114,109	49,250

Source : Monthly Statistical Bulletin Sarawak, June 2010

Note : (p) preliminary

SARAWAK : ARRIVALS AND DEPARTURES OF VESSELS BY PORT

Ports	2008		2009		2010	
					January - April	
	Arrivals	Departures	Arrivals	Departures	Arrivals	Departures
Kuching						
Number	3,513	3,513	3,456	3,456	1,220	1,516
'000 N.R.T.	4,425	4,425	4,474	4,474	1,220	1,516
Rajang						
Number	3,076	3,076	2,752	2,752	920	1,436
'000 N.R.T.	3,967	3,967	4,021	4,021	920	1,436
Bintulu						
Number	4,504	4,504	4,467	4,467	1,601	7,565
'000 N.R.T.	20,769	20,769	19,654	19,654	1,601	7,565
Miri						
Number	1,635	1,635	1,593	1,593	693	1,139
'000 N.R.T.	3,965	3,965	2,961	2,961	693	1,139
Others						
Number	796	813	810	793	329	83
'000 N.R.T.	204	211	263	262	318	80
Total						
Number	13,524	13,541	13,078	13,061	4,763	11,739
'000 N.R.T.	33,330	33,337	31,373	31,372	4,752	11,736

Source : Monthly Statistical Bulletin Sarawak, June 2010

Note : (N.R.T.) Net Registered Tonnes

SARAWAK : CARGO LOADED AND DISCHARGED AT PRINCIPAL PORTS

Port Authority	2007	2008	2009 p	2010 p
				Jan - Apr
<i>('000 freight tonnes)</i>				
Loaded	45,756	47,073	44,279	15,515
Kuching	1,690	1,641	1,815	710
Rajang	3,433	3,406	3,191	1,188
Bintulu	34,315	35,871	34,324	11,925
Miri	6,318	6,155	4,949	1,692
Discharged	10,633	11,365	11,450	4,221
Kuching	4,304	4,477	5,175	1,877
Rajang	1,540	1,604	1,546	587
Bintulu	4,268	4,600	4,120	1,532
Miri	521	684	609	225
Total	56,389	58,438	55,729	19,736

Source : Monthly Statistical Bulletin Sarawak, June 2010

Note : (p) preliminary

UTILITIES AND OTHER SERVICES

SARAWAK : CONSUMPTION AND PRODUCTION OF WATER

Particulars	2007	2008	2009 p	2010 p
				Jan - May
Production ('000 cu. metres)	314,258	325,594	330,998	148,422
Consumption ('000 cu. metres)	224,469	232,287	238,188	110,222

SARAWAK : UNIT GENERATED AND CONSUMPTION OF ELECTRICITY

Particulars	2007	2008	2009	2010 p
				Jan - Apr
Unit Generated (million KWH)	6,268.6	5,828.8	7,202.7	2,726.8
Consumption (million KWH)	5,381.2	4,856.7	5,843.5	2,262.7
Installed Capacity (MW) *	768.8	803.6	1,230.3	1,229.5 **

Source : Yearbook of Statistics Sarawak, 2009

Monthly Statistical Bulletin Sarawak, June 2010

* Sarawak Energy Berhad / Ministry of Public Utilities

Notes : (p) preliminary

** Refer to January - March

**SARAWAK : PRINCIPAL STATISTICS OF ALL PROFESSIONS *
(PRIVATE SECTOR)**

Professions	2002	2003	2005	2007 p
No. of Establishments	912	970	993	959
Revenue (RM '000)	497,074	562,886	586,111	695,219
Expenditure (RM '000)	384,496	433,806	451,627	524,086
Salaries and wages paid (RM '000)	158,039	181,928	190,201	196,570
Value of fixed assets owned (RM '000)	110,158	111,566	125,721	139,166

Source : Yearbook of Statistics Sarawak 2009

Notes : * Includes engineers, accountants, architects, building draughtsman, dentists, lawyers, doctors, surveyors and veterinary surgeons in the private sector.

No census / survey was conducted for the years 2004 and 2006.

(p) preliminary

SARAWAK : PRINCIPAL STATISTICS OF SELECTED PROFESSIONS

Profession	2003	2004	2005	2007 p
Real Estates				
No. of Establishments	13	13	12	15
Revenue (RM '000)	1,230	1,399	1,425	1,804
Expenditure (RM '000)	779	883	795	1,369
Salaries and wages paid (RM '000)	234	281	438	666
Value of fixed assets owned (RM '000)	1,344	1,673	1,638	1,681

Profession	2003	2004	2005	2006
------------	------	------	------	------

Travel Agencies and Tour Operators

No. of Establishments	104	104	99	107
Revenue (RM '000)	93,285	118,562	165,483	136,963
Expenditure (RM '000)	90,503	113,158	140,138	103,141
Salaries and wages paid (RM '000)	16,048	17,391	19,040	20,661
Value of fixed assets owned (RM '000)	14,829	17,027	18,260	21,951

Profession	2004	2005	2006	2007 p
------------	------	------	------	--------

Hotels and Lodgings

No. of Establishments	293	280	278	288
Revenue (RM '000)	325,438	371,188	361,983	386,010
Expenditure (RM '000)	309,492	247,017	163,587	343,254
Salaries and wages paid (RM '000)	74,829	74,926	78,703	80,623
Value of fixed assets owned (RM '000)	1,296,613	1,327,047	1,407,530	1,306,365

Source : Yearbook of Statistics Sarawak 2009

Note : (p) preliminary

FINANCE

SARAWAK : REVENUE AND EXPENDITURE

Revenue / Expenditure	2006	2007	2008	2009
				Jan - June
<i>(RM Million)</i>				
State				
Revenue	3,974	4,055	6,443	2,036
Operating Expenditure	2,752	3,132	4,345	1,738
Development Revenue	2,075	2,387	3,358	na
Development Expenditure	1,771	1,984	2,515	811
Federal				
Revenue	3,385	3,685	5,832	2,333
Operating Expenditure	2,047	4,969	5,116	2,304
Development Expenditure	185	1,148	971	705

Source : Yearbook of Statistics Sarawak 2009

**SARAWAK : IMPORT AND EXPORT DUTIES, SALES TAX,
EXCISE AND SERVICE TAX**

Items	2006	2007	2008	2009
				Jan - June
<i>(RM '000)</i>				
State				
Import Duties	-	-	-	-
Export Duties	15	194	12	12
Excise	-	-	-	-
Federal				
Import Duties	67,971	72,947	84,198	41,044
Export Duties	722,804	749,100	1,028,008	448,704
Sales Tax	124,074	128,516	187,702	66,438
Excise	75,024	110,541	142,846	69,553
Service Tax	58,633	66,525	71,652	36,563

Source : Yearbook of Statistics Sarawak 2009

Notes

Notes

Notes

Prepared by

**State Planning Unit
Chief Minister's Department
6th, 7th & 9th Floor, Wisma Bapa Malaysia
Petra Jaya
93502 Kuching, Sarawak**

Tel : 082 - 441957 / 492276

Fax: 082 - 449481 / 442536

Homepage: <http://www.spu.sarawak.gov.my>



ISSN 1985 - 4889